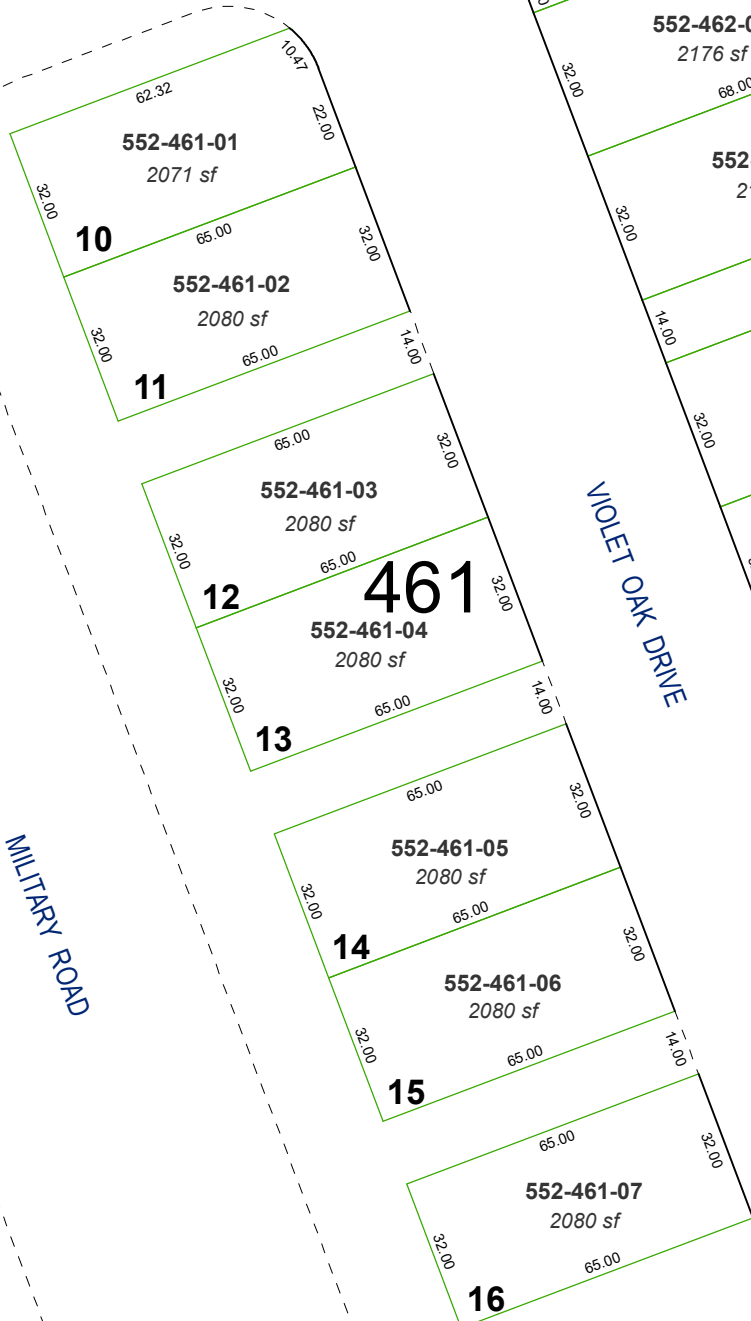


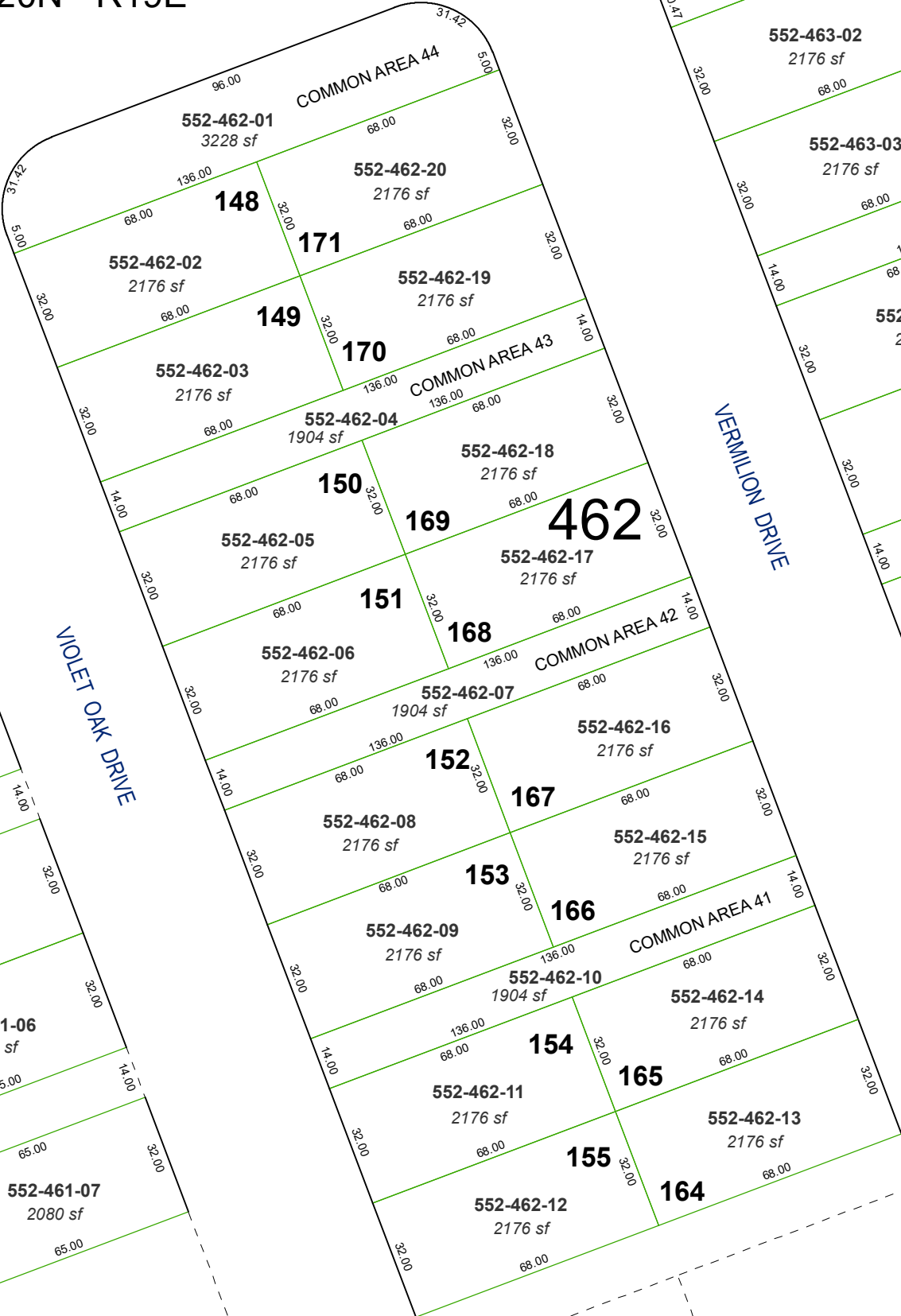
(#5472)
LEGACY VILLAGE TOWNHOMES - UNIT 1

PORTION OF SE 1/4 SECTION 4
T20N - R19E

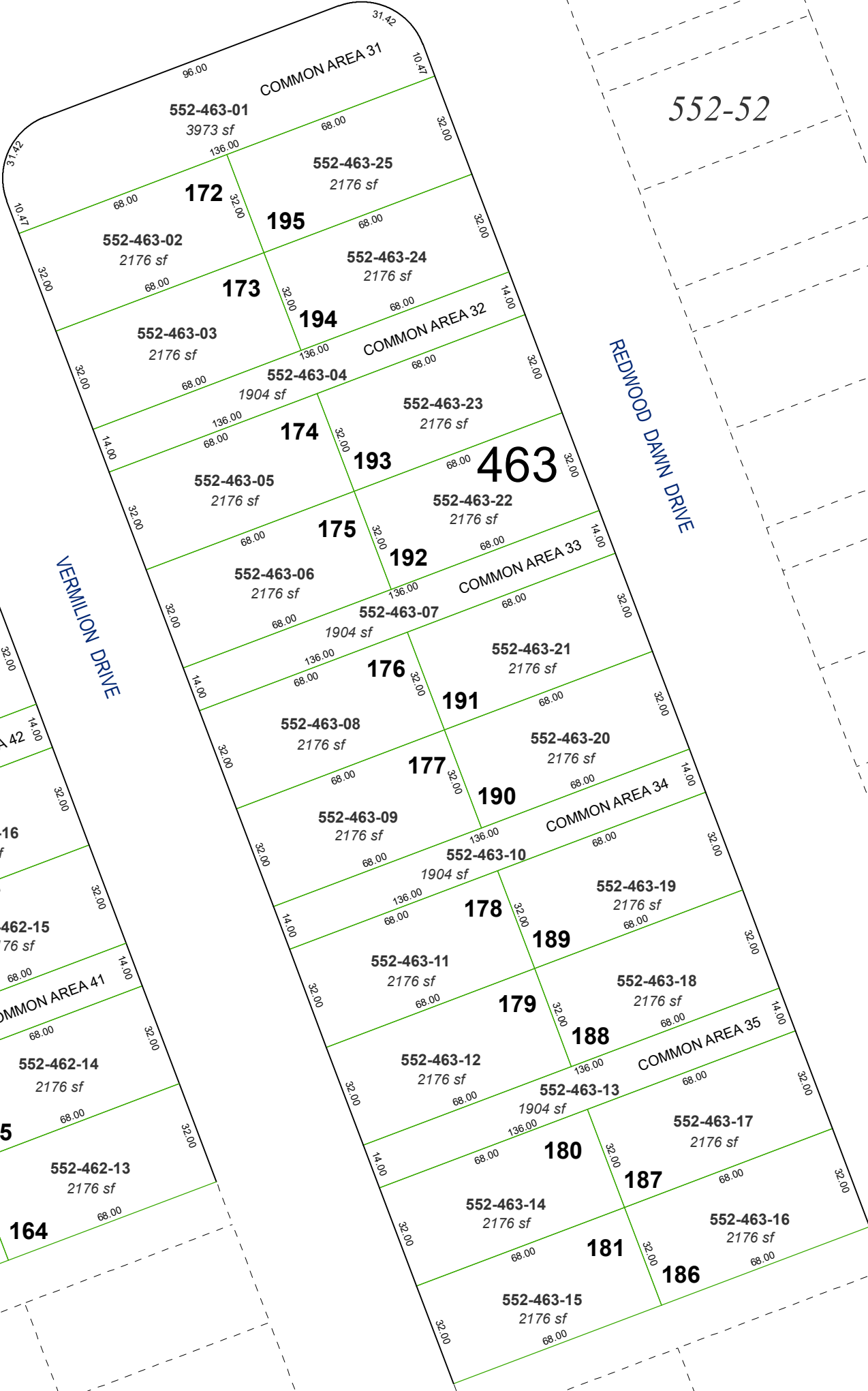
PETAL BLOSSOM DRIVE



VIOLET OAK DRIVE



VERMILION DRIVE



REDWOOD DAWN DRIVE

552-52

Assessor's Map Number

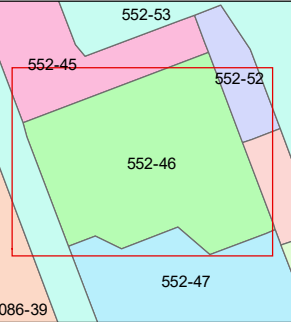
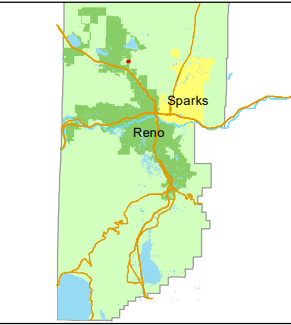
552-46

STATE OF NEVADA
WASHOE COUNTY
ASSESSOR'S OFFICE
1001 East Ninth Street, Building D
Reno, Nevada 89512
(775) 328-2231



Feet
0 10 20 30 40

1 inch = 40 feet



created by: JRA 2/18/2022

updated: _____

area previously shown on map(s):

552-26

NOTE: This map was prepared for the use of the Washoe County Assessor for assessment and illustrative purposes only. It does not represent a survey of the premises. No liability is assumed as to the sufficiency or accuracy of the data delineated hereon.