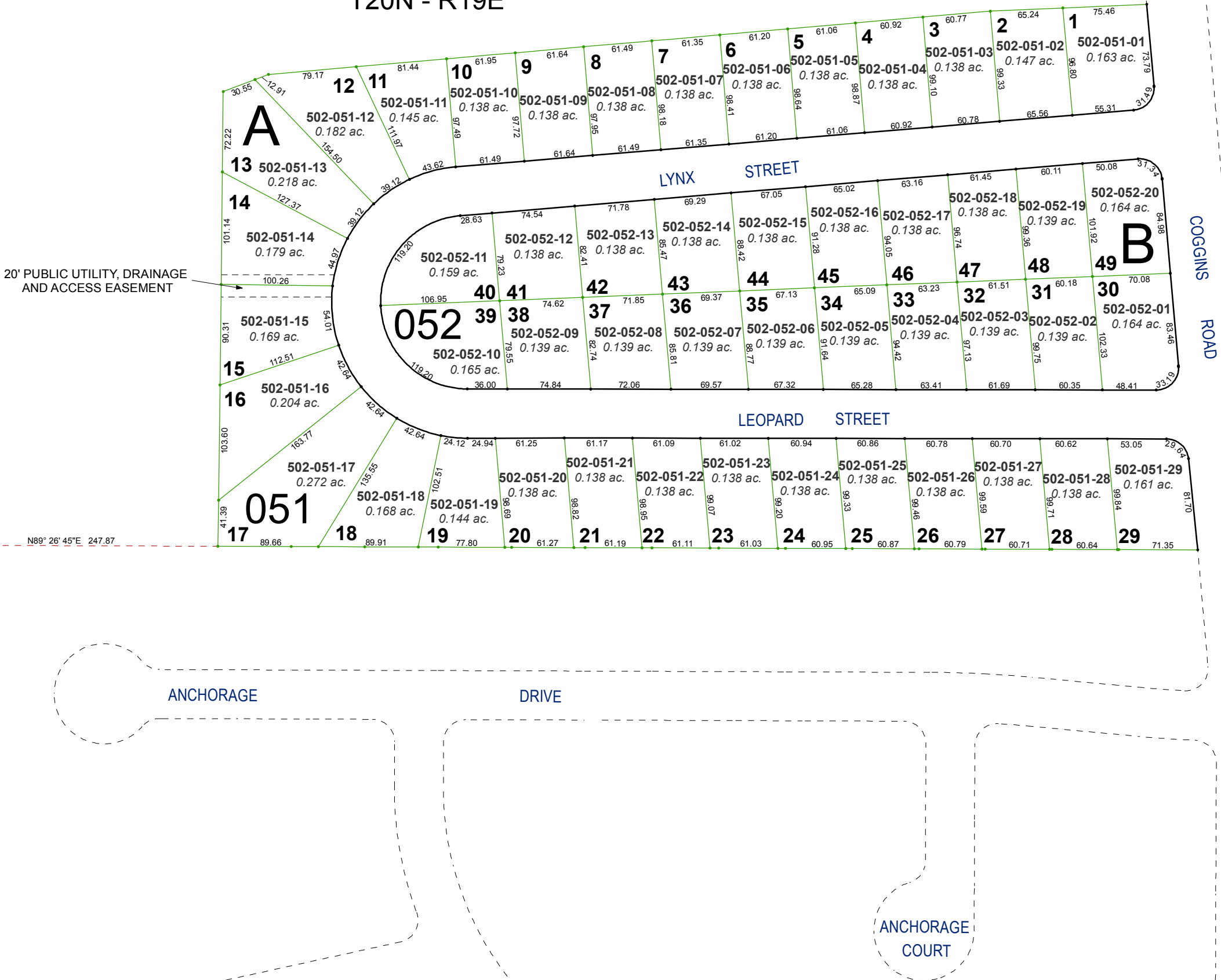


(#3287)  
**NORTHSIDE VILLAGE SUBDIVISION**

PORTION OF SW1/4 SECTION 23  
T20N - R19E

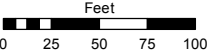


Assessor's Map Number

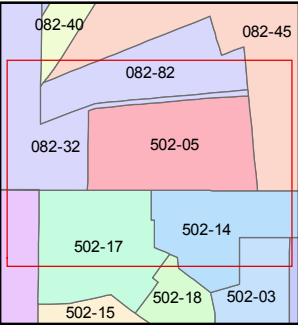
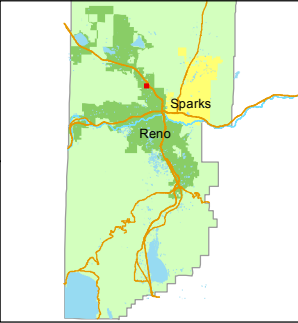
**502-05**

STATE OF NEVADA  
**WASHOE COUNTY**  
**ASSESSOR'S OFFICE**  
Michael E. Clark, Assessor

1001 East Ninth Street  
Building D  
Reno, Nevada 89512  
(775) 328-2231



1 inch = 100 feet



created by: SR 06/28/2016

last updated: \_\_\_\_\_

area previously shown on map(s)

82-45

NOTE: This map was prepared for the use of the Washoe County Assessor for assessment and illustrative purposes only. It does not represent a survey of the premises. No liability is assumed as to the sufficiency or accuracy of the data delineated hereon.