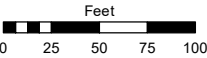
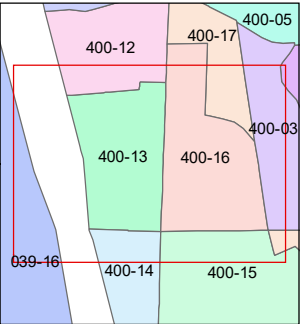
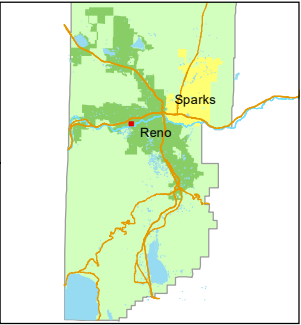


STATE OF NEVADA
WASHOE COUNTY
ASSESSOR'S OFFICE
1001 East Ninth Street, Building D
Reno, Nevada 89512
(775) 328-2231



1 inch = 100 feet



created by: DSR 3/16/2011

updated: JKF 9/23/21

area previously shown on map(s):

005-32

NOTE: This map was prepared for the use of the Washoe County Assessor for assessment and illustrative purposes only. It does not represent a survey of the premises. No liability is assumed as to the sufficiency or accuracy of the data delineated hereon.

(#3688) MONTE VISTA VILLAGE

PORTION OF NW 1/4 SECTION 16
T19N - R19E

