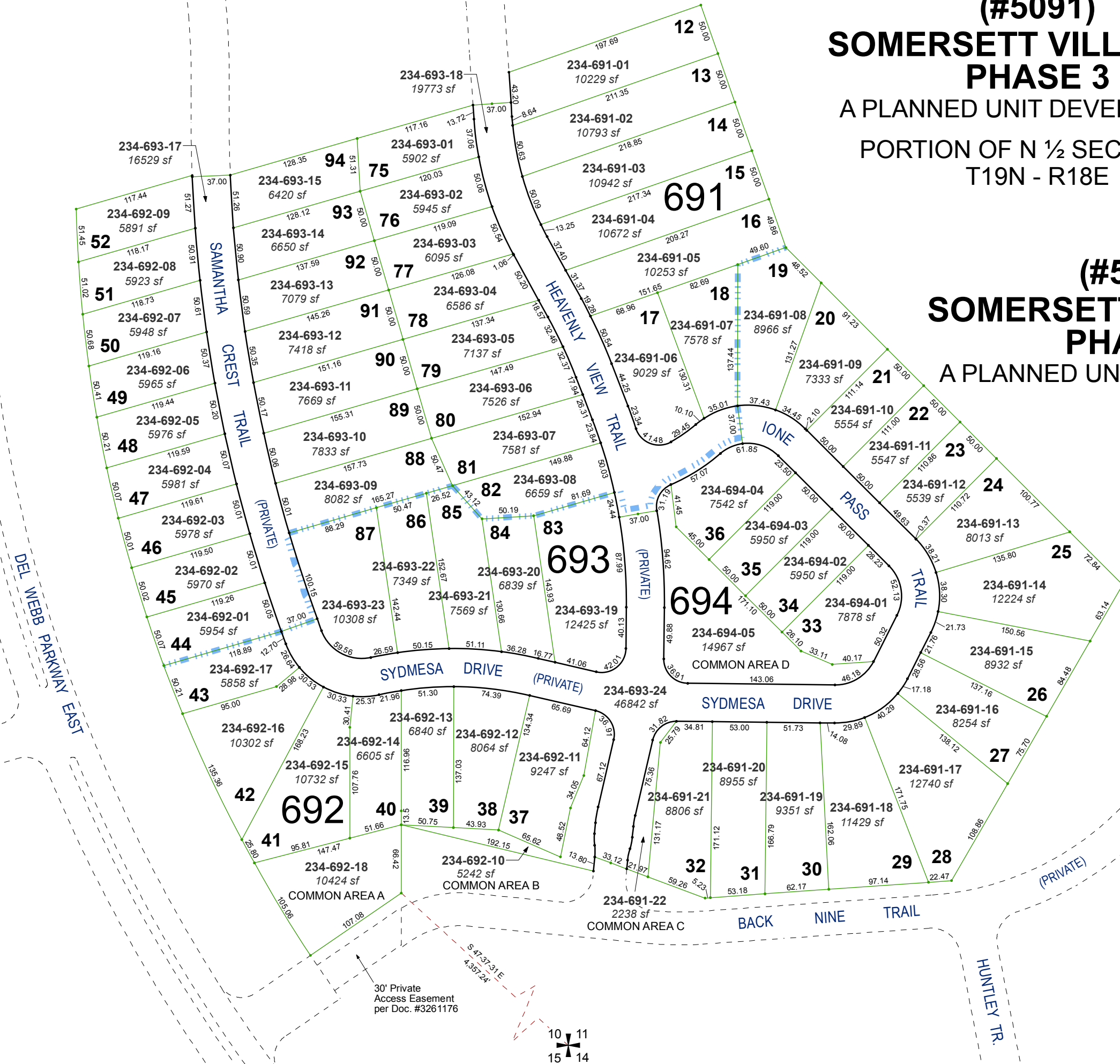


(#5091)
**SOMERSETT VILLAGE 5D
PHASE 3**

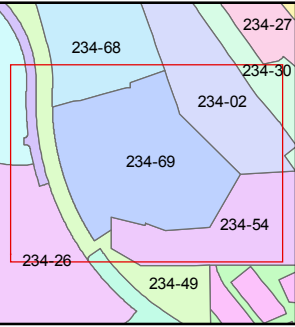
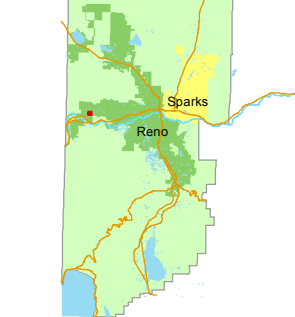
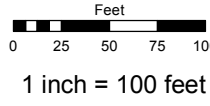
A PLANNED UNIT DEVELOPMENT
PORTION OF N ½ SECTION 10
T19N - R18E

(#5092)
**SOMERSETT VILLAGE 5D
PHASE 4**
A PLANNED UNIT DEVELOPMENT



Assessor's Map Number
234-69

STATE OF NEVADA
**WASHOE COUNTY
ASSESSOR'S OFFICE**
Joshua G. Wilson, Assessor
1001 East Ninth Street
Building D
Reno, Nevada 89512
(775) 328-2231



created by: KSB 9/12/2014
last updated: KSB 9/15/14

area previously shown on map(s)
234-49

NOTE: This map was prepared for the use of the Washoe County Assessor for assessment and illustrative purposes only. It does not represent a survey of the premises. No liability is assumed as to the sufficiency or accuracy of the data delineated hereon.