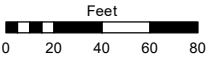
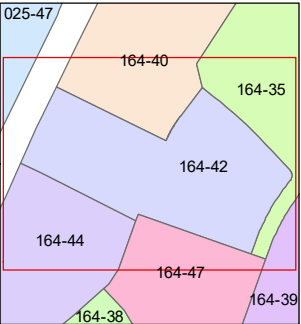
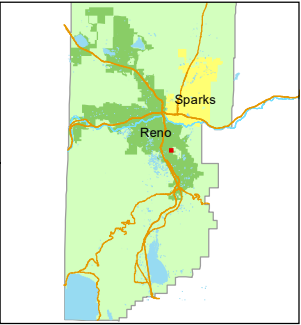


STATE OF NEVADA
WASHOE COUNTY
ASSESSOR'S OFFICE

1001 East Ninth Street, Building D
Reno, Nevada 89512
(775) 328-2231



1 inch = 80 feet



created by: NLH 6/11/2009

updated: JKF 4/3/18 JKF 2/1/19

JKF 5/20/19 JKF 1/13/20 JKF 3/15/21

area previously shown on map(s):

164-35

NOTE: This map was prepared for the use of the Washoe County Assessor for assessment and illustrative purposes only. It does not represent a survey of the premises. No liability is assumed as to the sufficiency or accuracy of the data delineated hereon.

PORTION OF W 1/2 SECTION 32
T19N - R20E

