

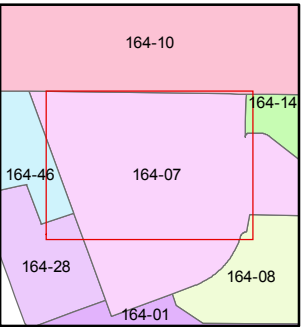
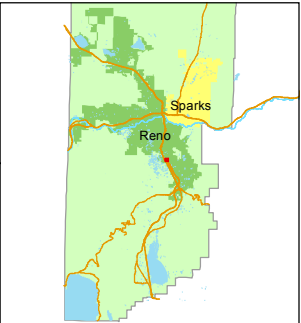
STATE OF NEVADA
WASHOE COUNTY
ASSESSOR'S OFFICE
Michael E. Clark, Assessor

1001 East Ninth Street
Building D
Reno, Nevada 89512
(775) 328-2231



Feet
0 10 20 30 40 50

1 inch = 50 feet



created by: JKF 12/29/2017

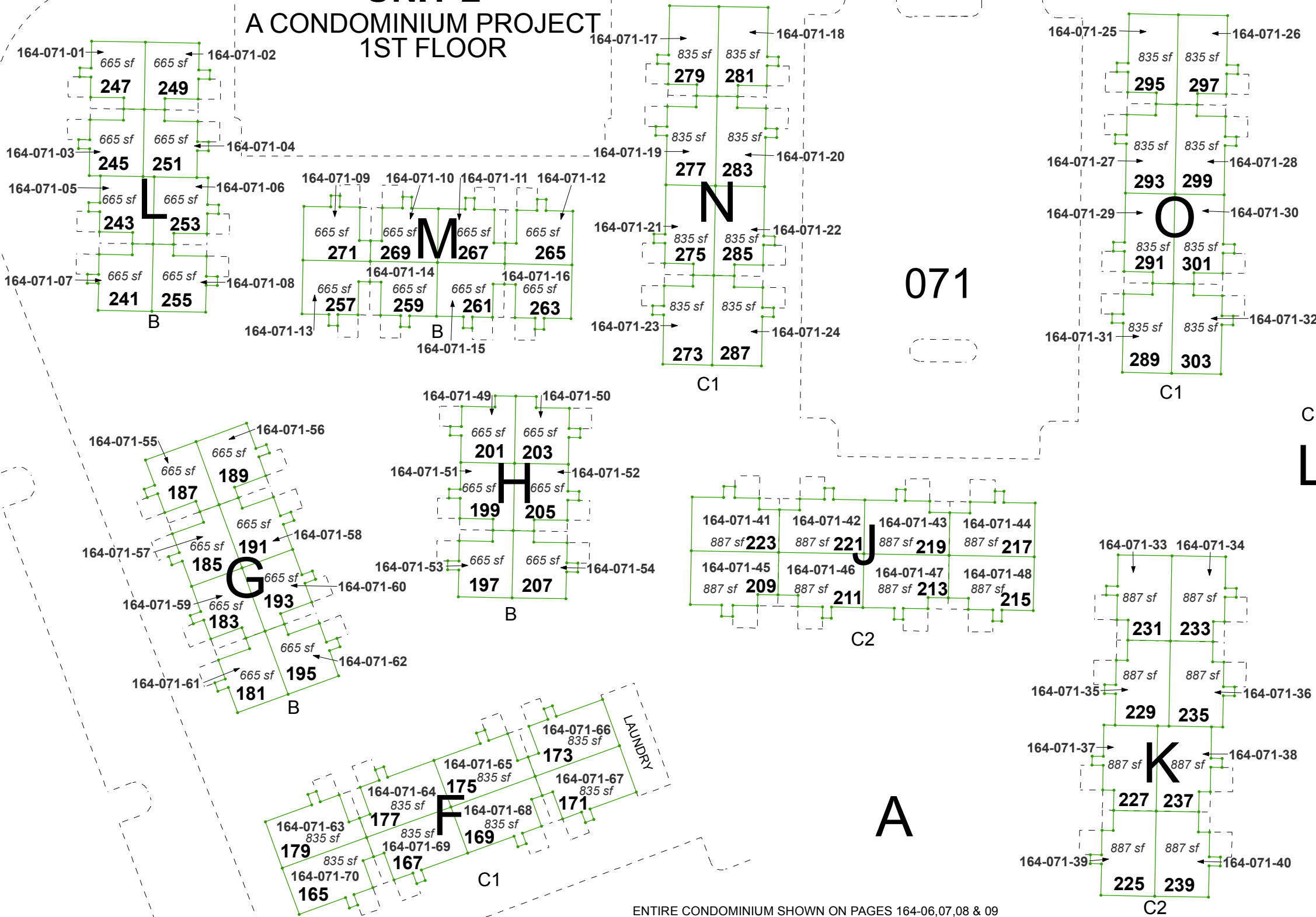
last updated:

area previously shown on map(s)
22-20-S1

NOTE: This map was prepared for the use of the Washoe County Assessor for assessment and illustrative purposes only. It does not represent a survey of the premises. No liability is assumed as to the sufficiency or accuracy of the data delineated hereon.

(#2209)
WATERFORD PARK
UNIT 2

A CONDOMINIUM PROJECT
1ST FLOOR



ENTIRE CONDOMINIUM SHOWN ON PAGES 164-06,07,08 & 09
UNIT DETAILS SHOWN ON 164-06-S1