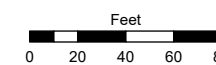
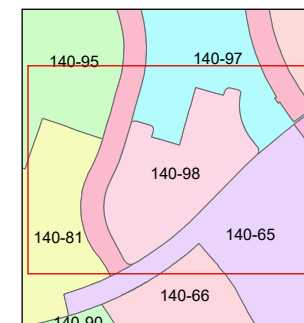
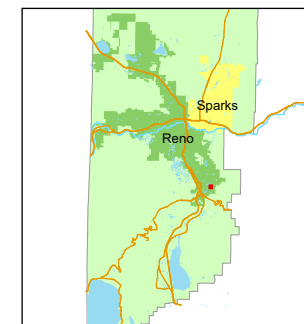


STATE OF NEVADA
WASHOE COUNTY
ASSESSOR'S OFFICE

1001 East Ninth Street, Building D
Reno, Nevada 89512
(775) 328-2231



1 inch = 80 feet



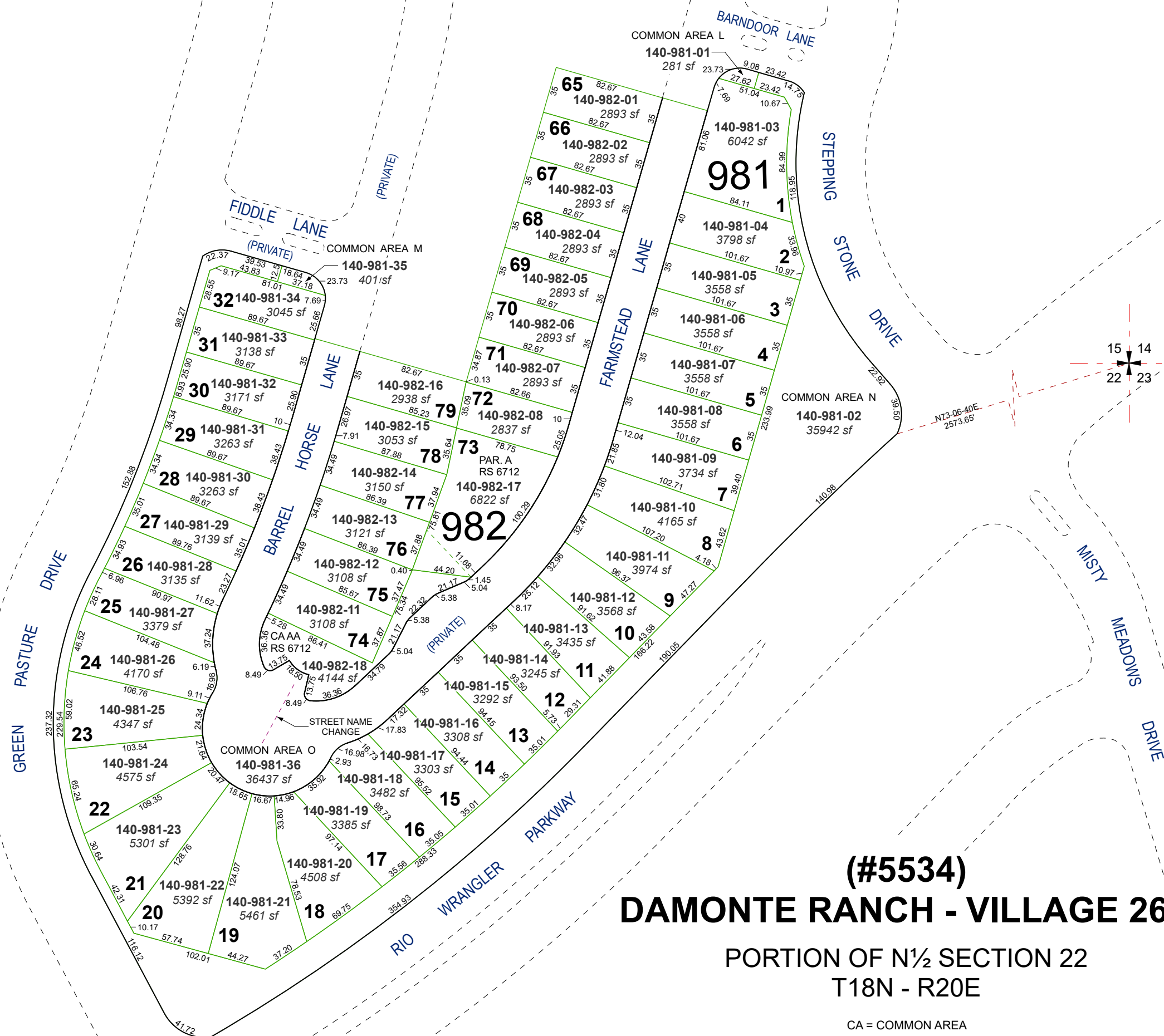
created by: SR 7/3/2023

updated: KDW 4/9/26

area previously shown on map(s):

140-73

NOTE: This map was prepared for the use of the Washoe County Assessor for assessment and illustrative purposes only. It does not represent a survey of the premises. No liability is assumed as to the sufficiency or accuracy of the data delineated herein.



(#5534)
DAMONTE RANCH - VILLAGE 26B

PORTION OF N½ SECTION 22
T18N - R20E

CA = COMMON AREA