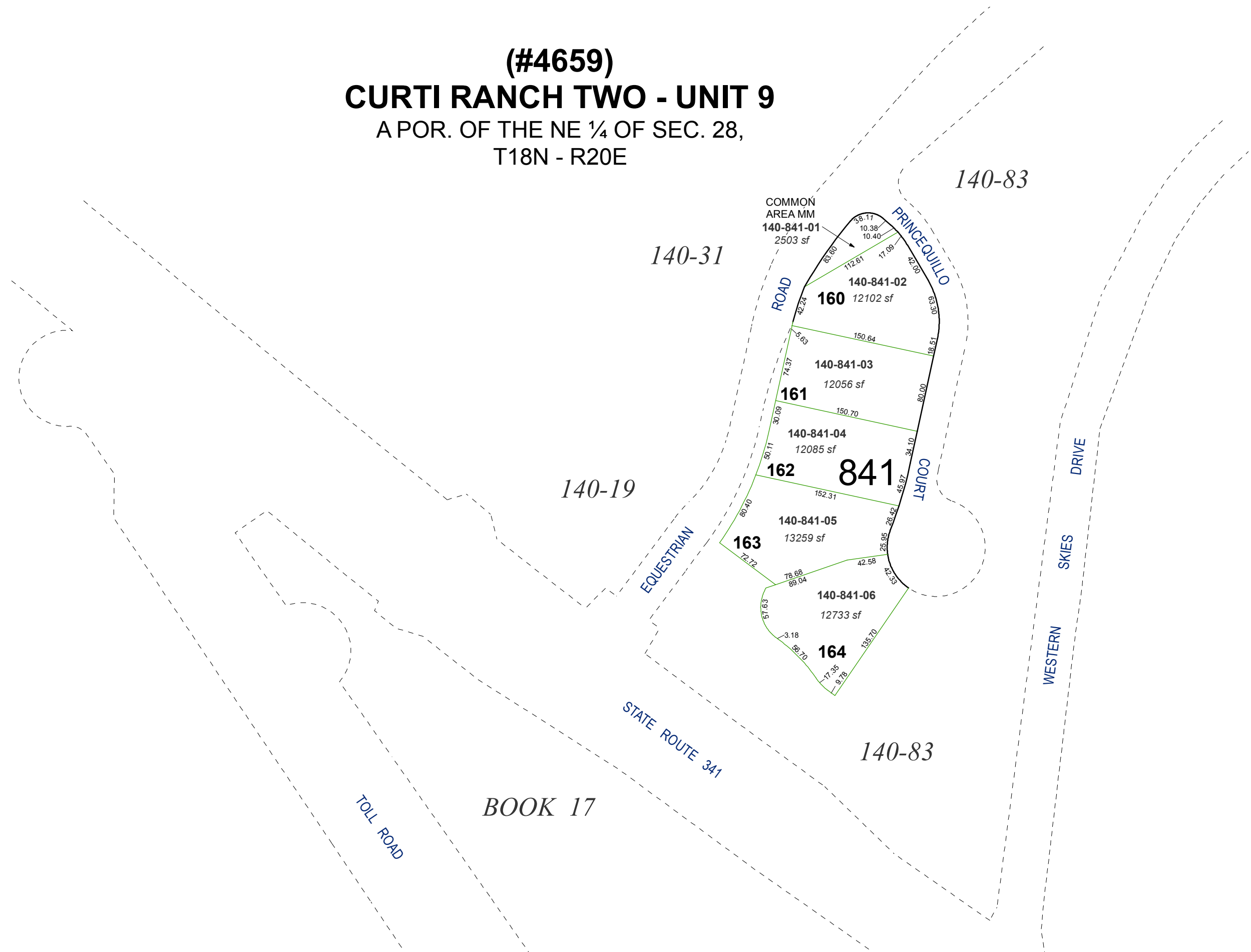


(#4659)
CURTI RANCH TWO - UNIT 9
A POR. OF THE NE ¼ OF SEC. 28,
T18N - R20E

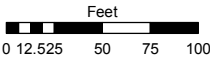


Assessor's Map Number

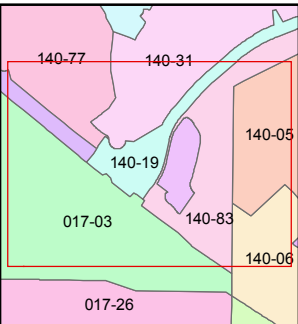
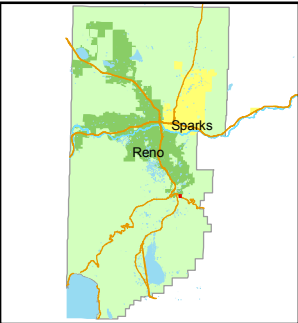
140-84

STATE OF NEVADA
WASHOE COUNTY
ASSESSOR'S OFFICE
Joshua G. Wilson, Assessor

1001 East Ninth Street
Building D
Reno, Nevada 89512
(775) 328-2231



1 inch = 100 feet



created by: NLH 6/11/2010

last updated: _____

area previously shown on map(s)

140-03

NOTE: This map was prepared for the use of the Washoe County Assessor for assessment and illustrative purposes only. It does not represent a survey of the premises. No liability is assumed as to the sufficiency or accuracy of the data delineated hereon.