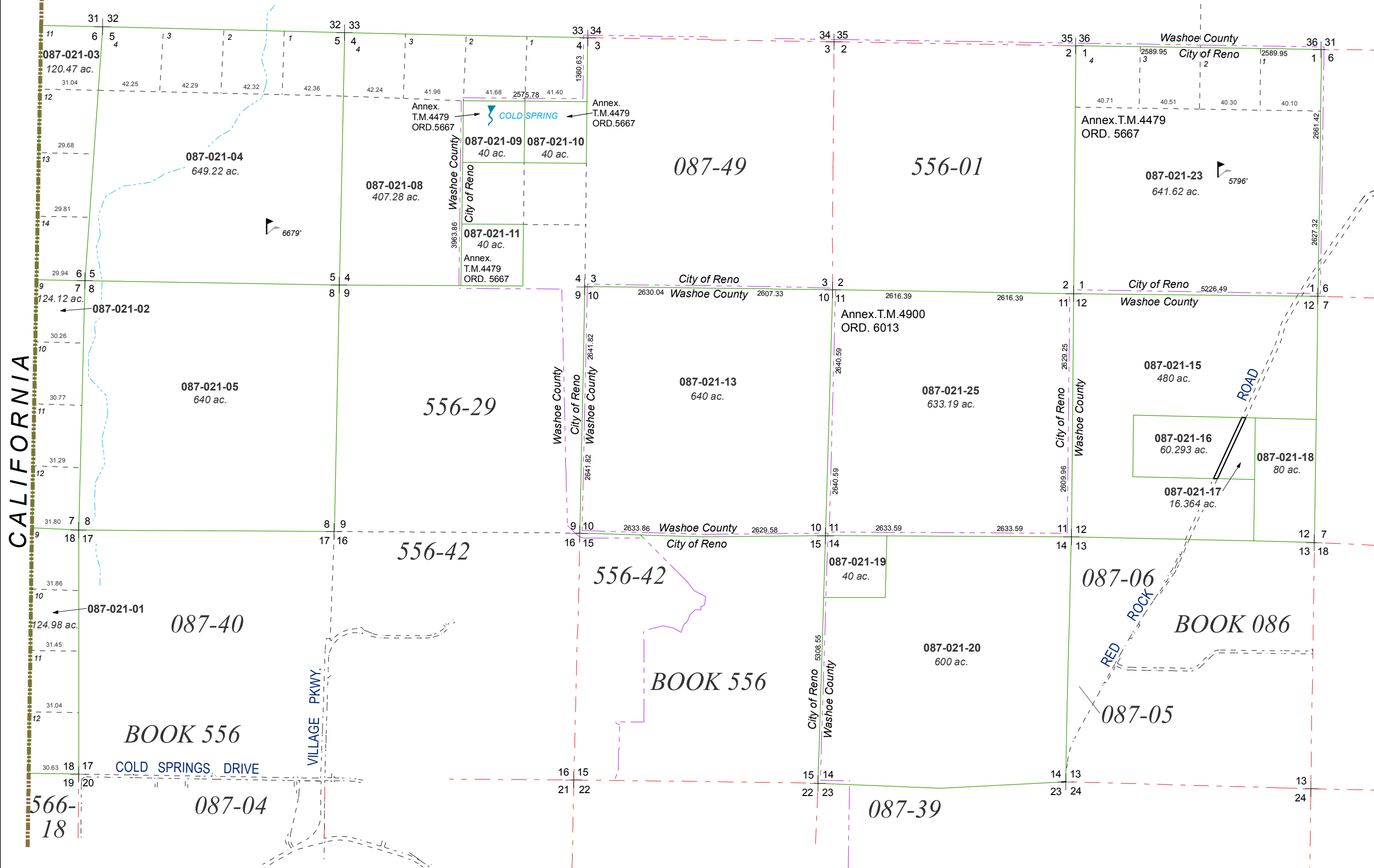


SECTIONS 1, 4 (PORT.), 5, 6, 7, 8, 10, 11, 12, 14 & 18
T21N - R18E

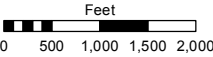


Assessor's Map Number

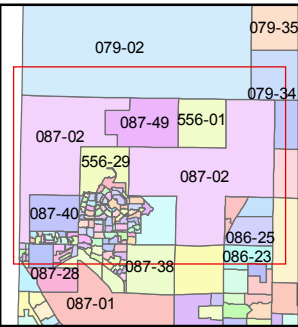
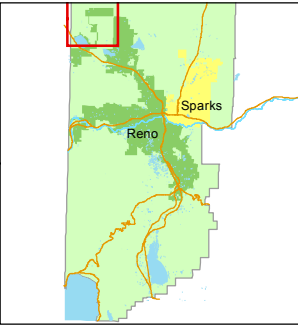
087-02

STATE OF NEVADA
WASHOE COUNTY
ASSESSOR'S OFFICE
Joshua G. Wilson, Assessor

1001 East Ninth Street
Building D
Reno, Nevada 89512
(775) 328-2231



1 inch = 2,000 feet



created by: TWT 3/30/2010

last updated: CFB 02/20/2014

area previously shown on map(s)

NOTE: This map was prepared for the use of the Washoe County Assessor for assessment and illustrative purposes only. It does not represent a survey of the premises. No liability is assumed as to the sufficiency or accuracy of the data delineated hereon.