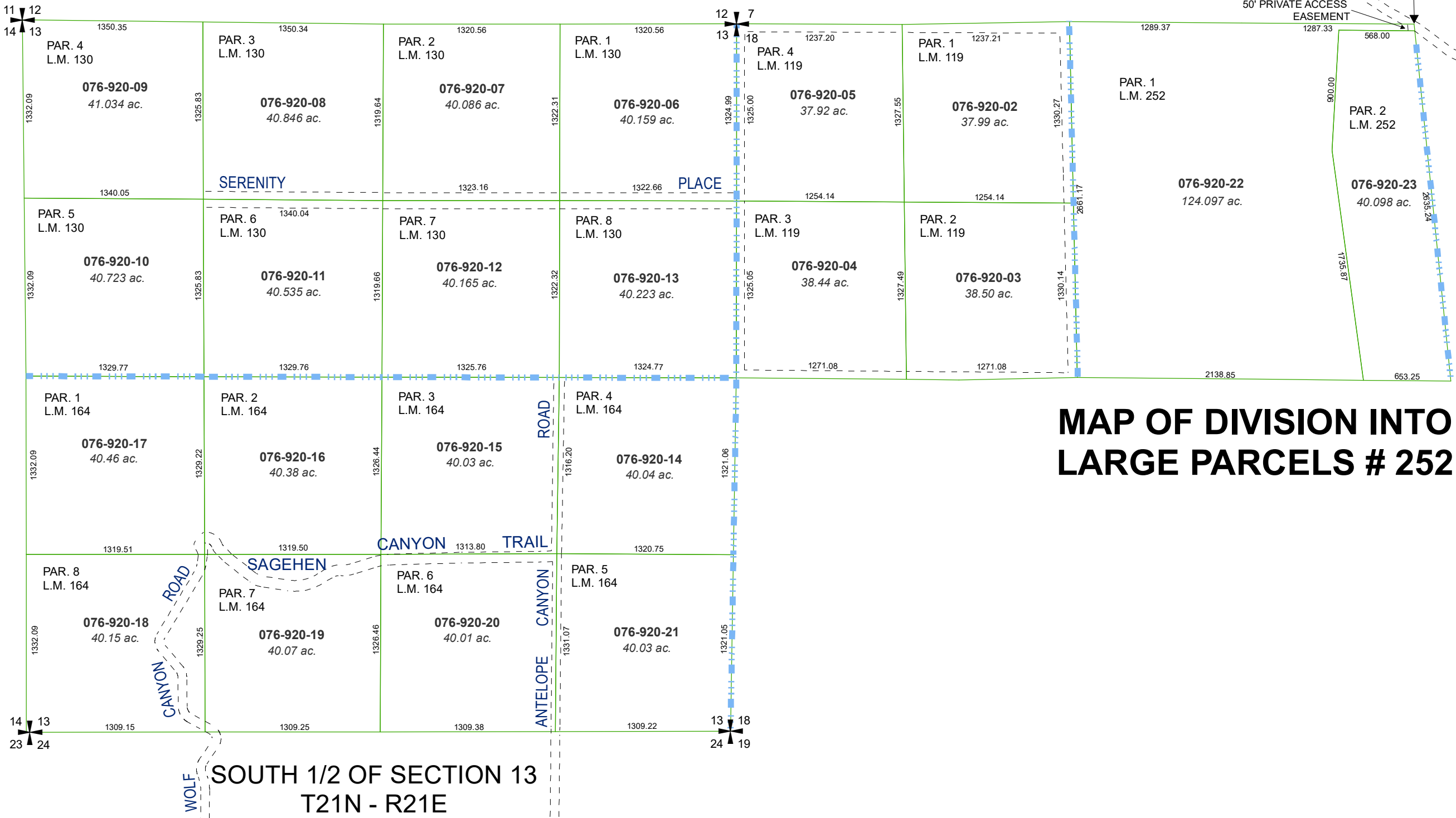


MAP OF DIVISION INTO
LARGE PARCELS # 130

NORTH 1/2 OF SECTION 13
T21N - R21E

MAP OF DIVISION INTO
LARGE PARCELS # 119

NORTH 1/2 OF SECTION 18
T21N - R22E



MAP OF DIVISION INTO
LARGE PARCELS # 252

Assessor's Map Number

076-92

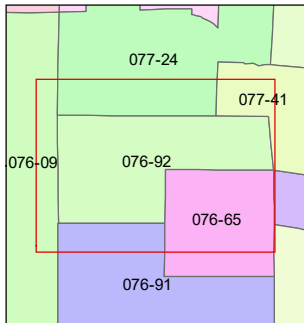
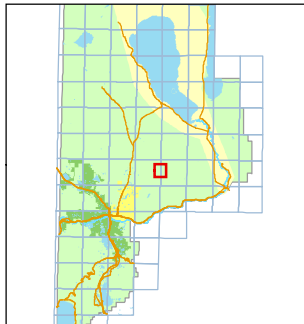
STATE OF NEVADA
WASHOE COUNTY
ASSESSOR'S OFFICE

1001 East Ninth Street, Building D
Reno, Nevada 89512
(775) 328-2231



Feet
0 200 400 600 800

1 inch = 800 feet



created by: TWT 6/15/2011

updated: JKF 9/14/20

area previously shown on map(s):

NOTE: This map was prepared for the use of the Washoe County Assessor for assessment and illustrative purposes only. It does not represent a survey of the premises. No liability is assumed as to the sufficiency or accuracy of the data delineated herein.