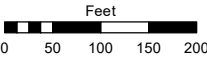
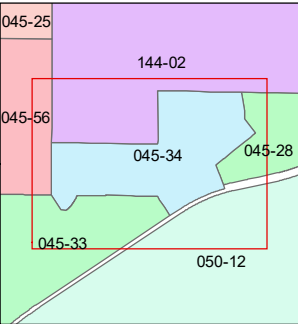
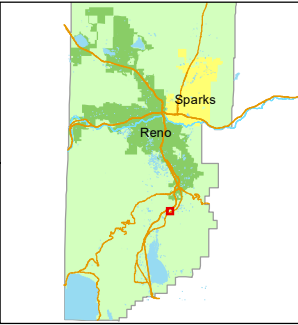


STATE OF NEVADA
WASHOE COUNTY
ASSESSOR'S OFFICE

1001 East Ninth Street, Building D
Reno, Nevada 89512
(775) 328-2231



1 inch = 200 feet



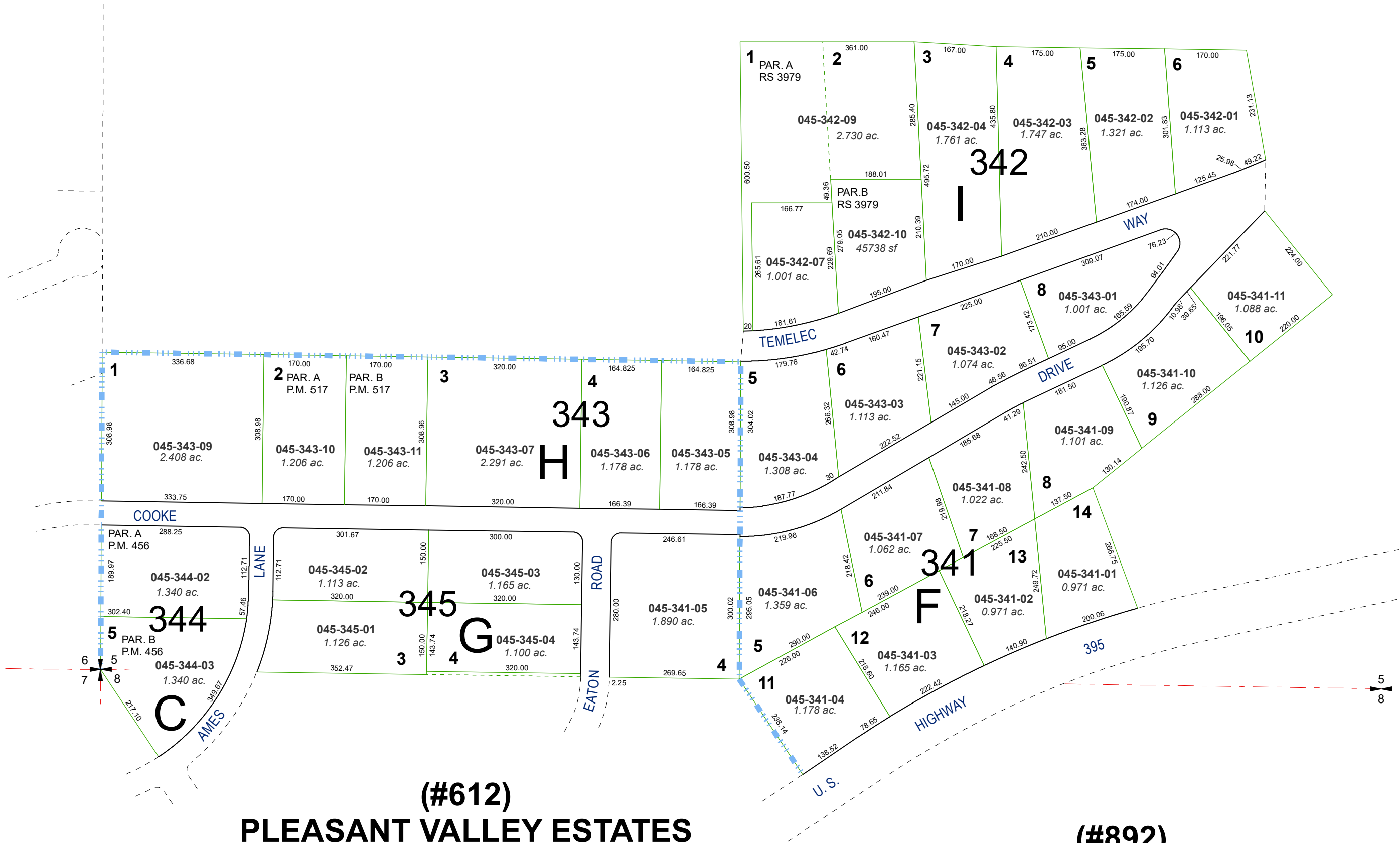
created by: KGC 12/6/2024

updated: _____

area previously shown on map(s):

45-29, 50-10

NOTE: This map was prepared for the use of the Washoe County Assessor for assessment and illustrative purposes only. It does not represent a survey of the premises. No liability is assumed as to the sufficiency or accuracy of the data delineated hereon.



(#612)
PLEASANT VALLEY ESTATES

PORTION OF SECTIONS 5, 7 & 8
T17N - R20E

(#892)
PLEASANT VALLEY ESTATES
UNIT NO. 2