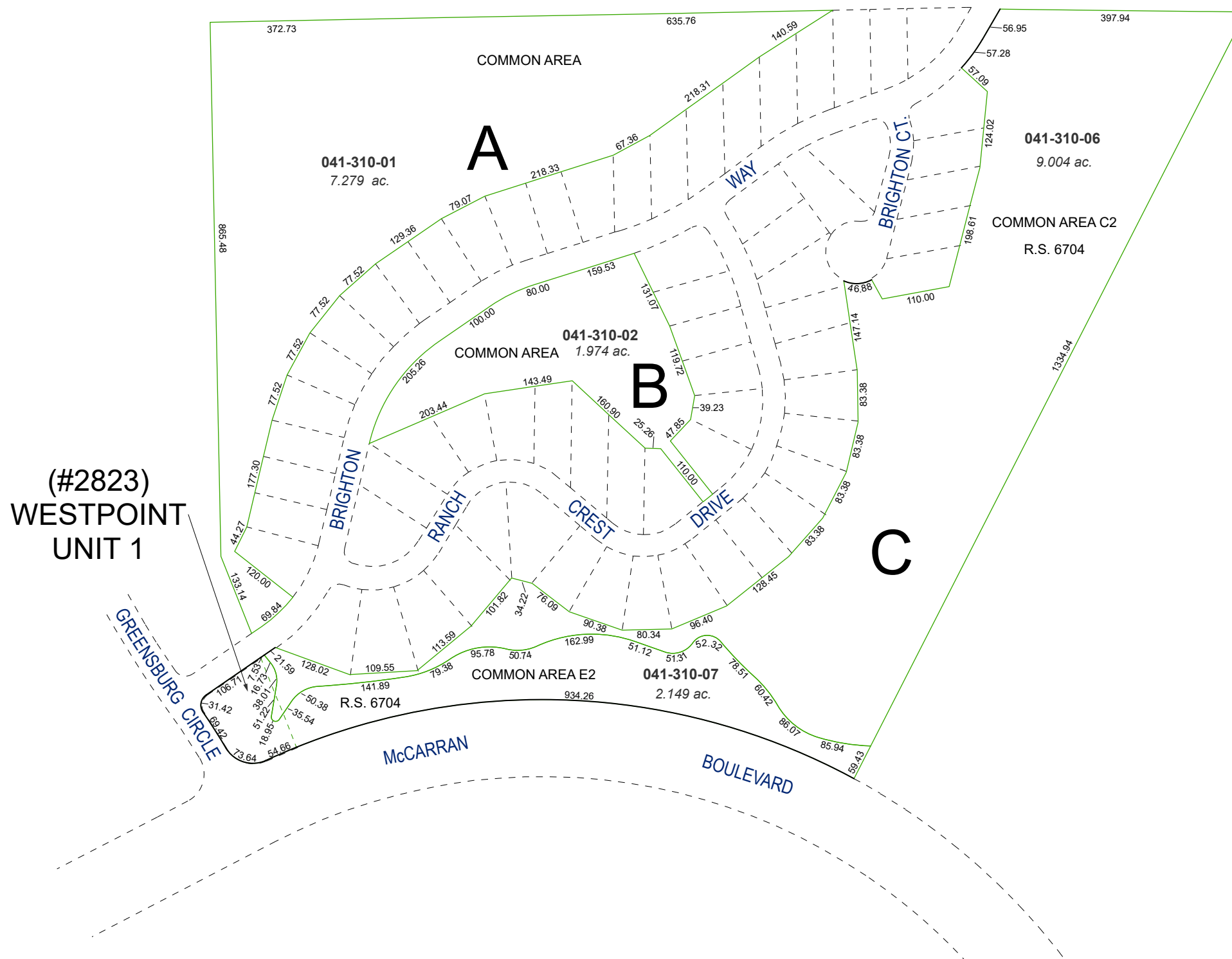


(#2298)
CAUGHLIN RIDGES UNIT NO. 1
VISTA POINTE

POR. N 1/2 SECTION 28
 T19N - R19E



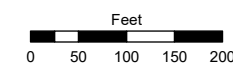
(#2823)
 WESTPOINT
 UNIT 1

Assessor's Map Number

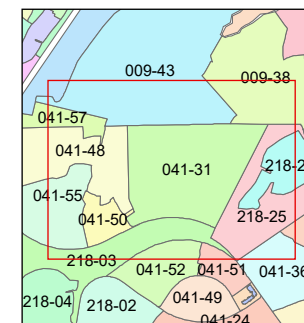
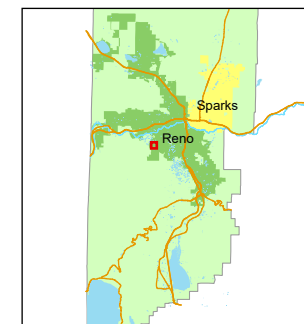
041-31

STATE OF NEVADA
WASHOE COUNTY
ASSESSOR'S OFFICE

1001 East Ninth Street, Building D
 Reno, Nevada 89512
 (775) 328-2231



1 inch = 200 feet



created by: KGC 4/30/2024

updated: KDW 3/5/26

area previously shown on map(s):

41-24

NOTE: This map was prepared for the use of the Washoe County Assessor for assessment and illustrative purposes only. It does not represent a survey of the premises. No liability is assumed as to the sufficiency or accuracy of the data delineated herein.