

Assessor's Map Number

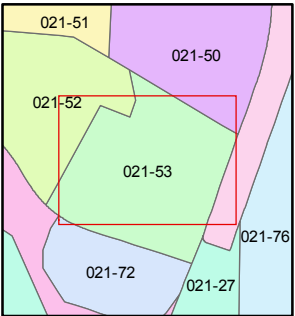
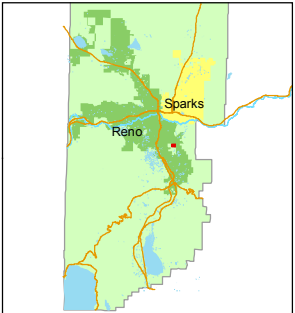
021-53

STATE OF NEVADA
WASHOE COUNTY
ASSESSOR'S OFFICE
Michael E. Clark, Assessor

1001 East Ninth Street
Building D
Reno, Nevada 89512
(775) 328-2231



1 inch = 40 feet



created by: TWT 2/12/2015

last updated: _____

area previously shown on map(s) _____

NOTE: This map was prepared for the use of the Washoe County Assessor for assessment and illustrative purposes only. It does not represent a survey of the premises. No liability is assumed as to the sufficiency or accuracy of the data delineated hereon.

(#1974)
AMENDED PLAT OF
DONNER CREEK VILLAGE

A CONDOMINIUM

1st LEVEL OWNERSHIP

POR. NW 1/4 SEC. 33

T19N - R20E