

(#1974)
AMENDED PLAT OF
DONNER CREEK VILLAGE

A CONDOMINIUM
1st LEVEL OWNERSHIP
POR. NW 1/4 SEC. 33
T19N - R20E

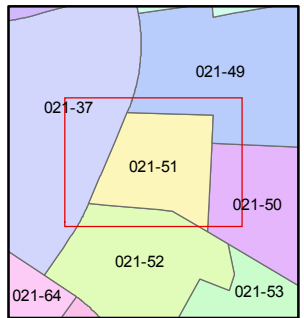
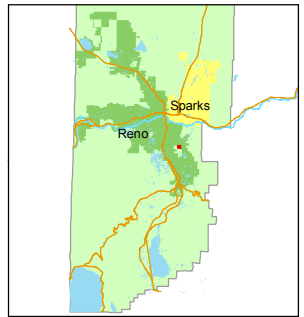
Assessor's Map Number
021-51

STATE OF NEVADA
WASHOE COUNTY
ASSESSOR'S OFFICE
Michael E. Clark, Assessor

1001 East Ninth Street
Building D
Reno, Nevada 89512
(775) 328-2231



1 inch = 40 feet



created by: TWT 2/10/2015

last updated:

area previously shown on map(s)

NOTE: This map was prepared for the use of the Washoe County Assessor for assessment and illustrative purposes only. It does not represent a survey of the premises. No liability is assumed as to the sufficiency or accuracy of the data delineated hereon.

DRIVE

MATCH

GORC WAY

PHASE 8
A 1/32 INTEREST EACH
IN COMMON AREA

BLDG. TYPE I

021-510-39, 021-510-37, 021-510-38, 021-510-42, 021-510-43, 021-510-44, 021-510-41, 021-510-40, 021-510-36, 021-510-35, 021-510-34, 021-510-33, 021-510-32, 021-510-31, 021-510-30, 021-510-29, 021-510-28, 021-510-27, 021-510-26, 021-510-25, 021-510-24, 021-510-23, 021-510-22, 021-510-21, 021-510-20, 021-510-19, 021-510-18, 021-510-17, 021-510-16, 021-510-15, 021-510-14, 021-510-13, 021-510-12, 021-510-11, 021-510-10, 021-510-09, 021-510-08, 021-510-07, 021-510-06, 021-510-05, 021-510-04, 021-510-03, 021-510-02, 021-510-01, 021-510-00

BLDG. TYPE IV

021-510-23, 021-510-24, 021-510-22, 021-510-19, 021-510-18, 021-510-15, 021-510-14, 021-510-11, 021-510-09, 021-510-07, 021-510-06, 021-510-03, 021-510-01

BLDG. TYPE VIII

PHASE 7
A 1/36 INTEREST EACH
IN COMMON AREA