

A CONDOMINIUM
1st LEVEL OWNERSHIP
POR. NW 1/4 SEC. 33
T19N - R20E

PHASE 3
A 1/56th INTEREST EACH
IN COMMON AREA

COMMON
AREA

BLDG. TYPE III

Assessor's Map Number

021-50

STATE OF NEVADA
WASHOE COUNTY
ASSESSOR'S OFFICE
Michael E. Clark, Assessor

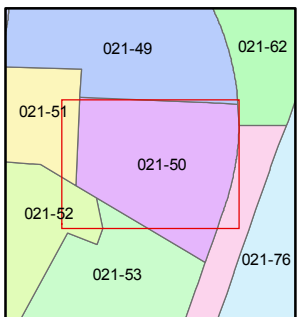
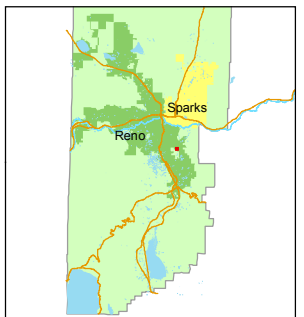
1001 East Ninth Street
Building D
Reno, Nevada 89512
(775) 328-2231



Feet

0 10 20 30 40

1 inch = 40 feet



created by: TWT 2/9/2015

last updated: _____

area previously shown on map(s)

NOTE: This map was prepared for the use of the Washoe County Assessor for assessment and illustrative purposes only. It does not represent a survey of the premises. No liability is assumed as to the sufficiency or accuracy of the data delineated hereon.