

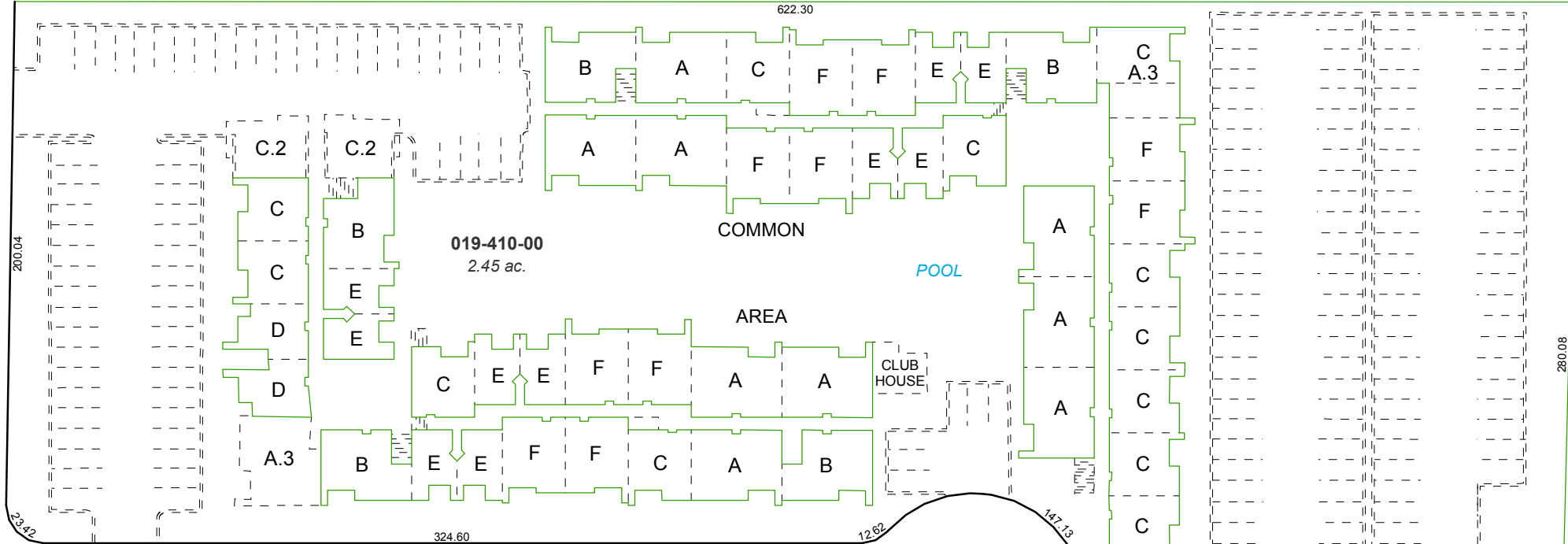
(#1702)
SALEM PLAZA
A CONODOMINIUM

TO EACH AN UNDIVIDED 1/150th INTEREST IN COMMON AREA

PORTION OF THE SE 1/4 OF SECTION 23, T19N - R19E

STREET

PLUMAS



SALEM

PLACE

PLACE

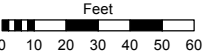
SALEM

E 1/4 COR.
SEC. 23

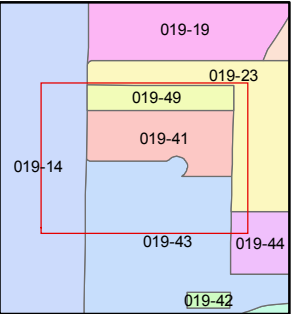
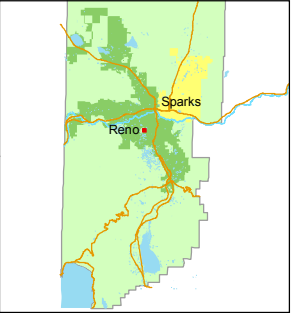
Assessor's Map Number
019-41

STATE OF NEVADA
WASHOE COUNTY
ASSESSOR'S OFFICE
Joshua G. Wilson, Assessor

1001 East Ninth Street
Building D
Reno, Nevada 89512
(775) 328-2231



1 inch = 60 feet



created by: TWT 11/3/2014

last updated:

area previously shown on map(s)

NOTE: This map was prepared for the use of the Washoe County Assessor for assessment and illustrative purposes only. It does not represent a survey of the premises. No liability is assumed as to the sufficiency or accuracy of the data delineated hereon.