

(#709)
SHARON SUBDIVISION

POR. OF NE ¼ SECTION 22
T19N - R19E

Assessor's Map Number

018-13

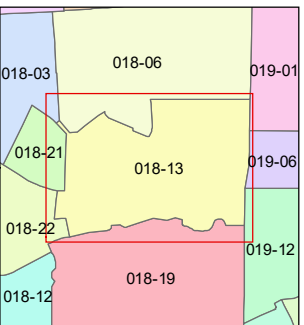
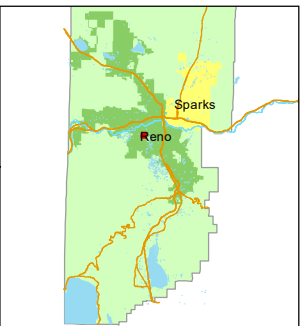
STATE OF NEVADA
WASHOE COUNTY
ASSESSOR'S OFFICE

1001 East Ninth Street, Building D
Reno, Nevada 89512
(775) 328-2231



Feet
0 25 50 75 100

1 inch = 100 feet



created by: NLH 11/08/2011

updated: JRA 9/27/21

area previously shown on map(s):

NOTE: This map was prepared for the use of the Washoe County Assessor for assessment and illustrative purposes only. It does not represent a survey of the premises. No liability is assumed as to the sufficiency or accuracy of the data delineated hereon.

(#690)
POUCH SUB. NO. 1

