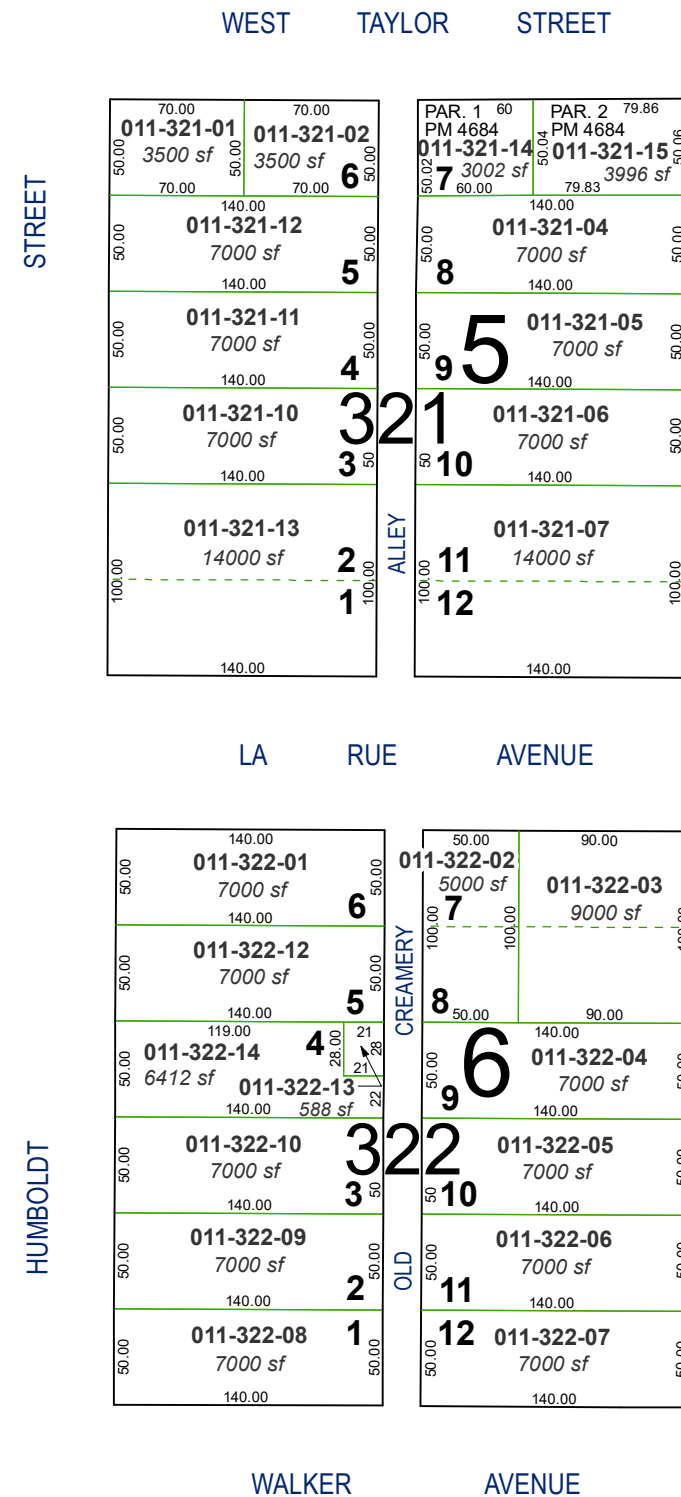
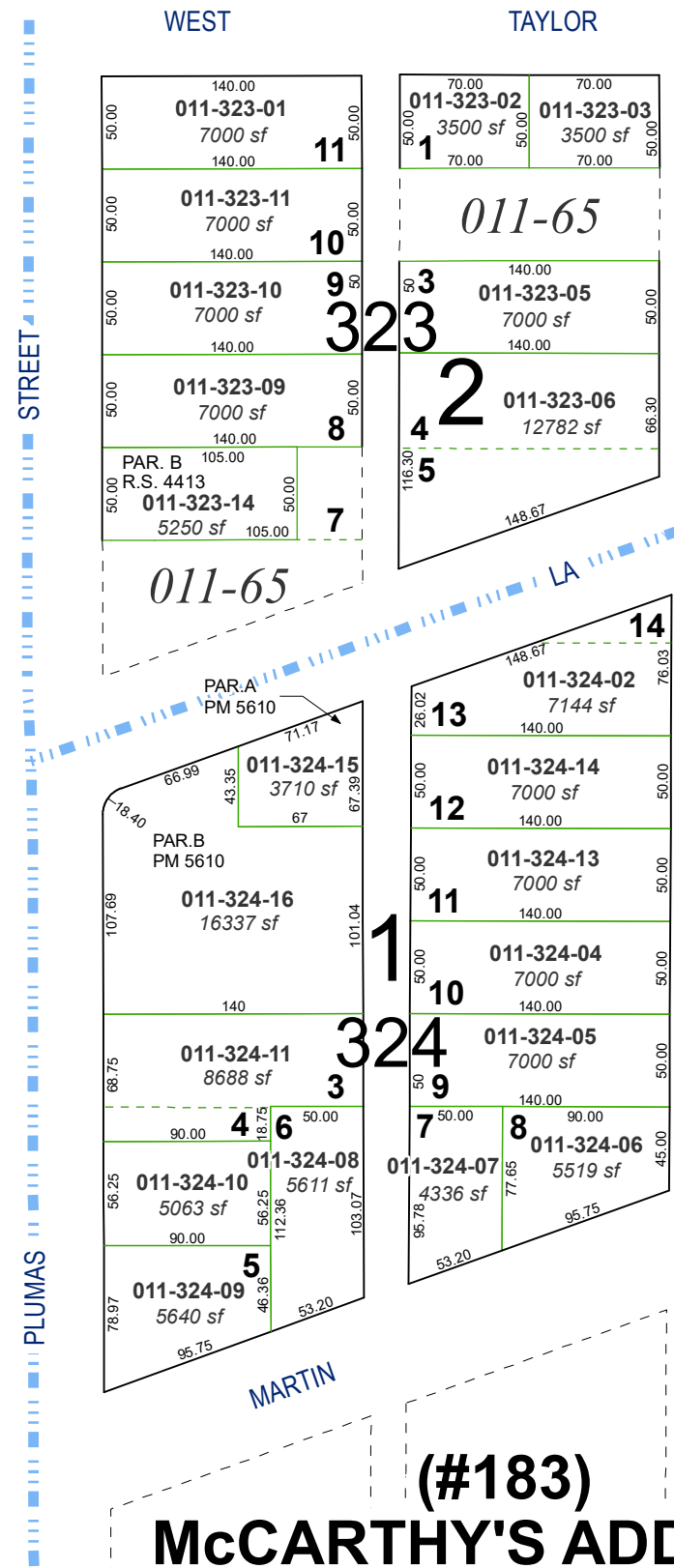


(#111) SCENIC PARK ADDITION

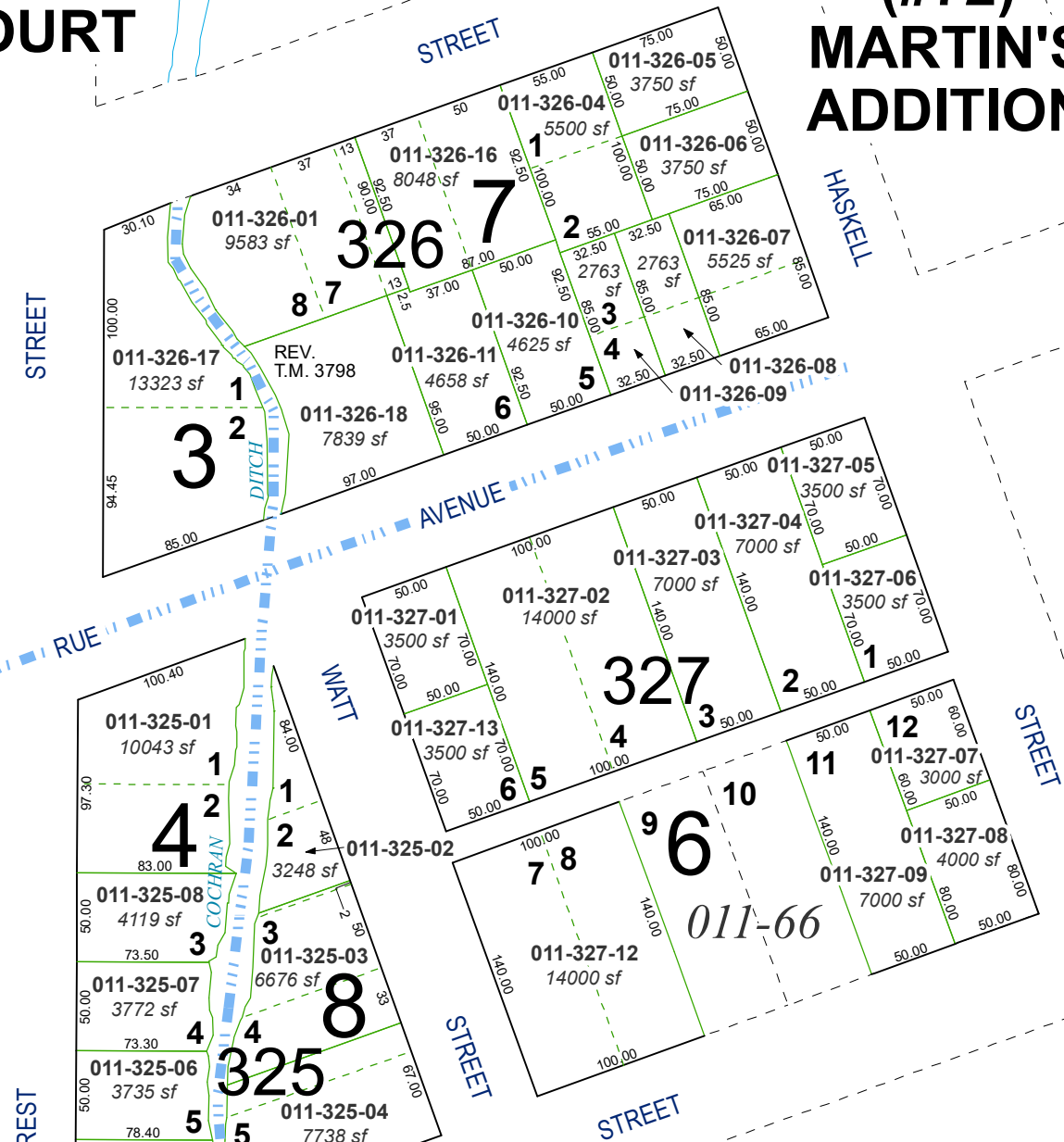
PORTION OF THE NE 1/4 OF
SECTION 14, T19N - R19E



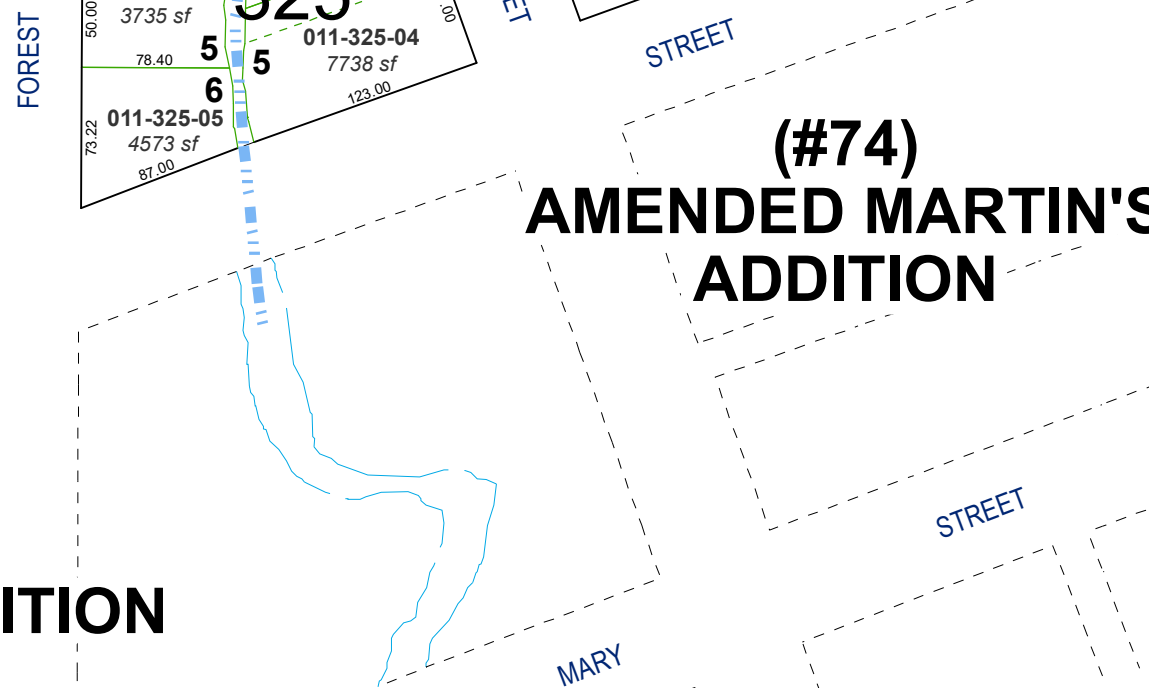
(#132) AMENDED VILLA COURT ADDITION



(#72) MARTIN'S ADDITION



(#74) AMENDED MARTIN'S ADDITION



(#183) McCARTHY'S ADDITION

Assessor's Map Number

011-32

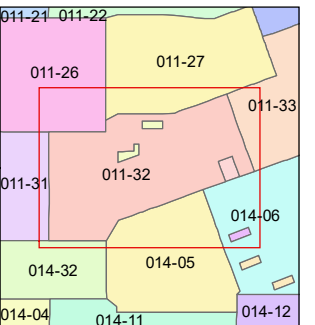
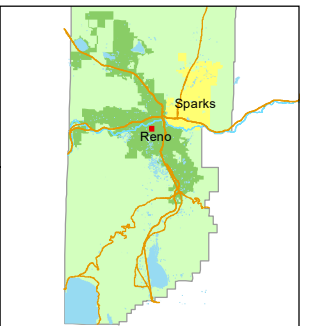
STATE OF NEVADA
WASHOE COUNTY
ASSESSOR'S OFFICE

1001 East Ninth Street, Building D
Reno, Nevada 89512
(775) 328-2231



Feet
0 25 50 75 100

1 inch = 100 feet



created by: TWT 04/02/2013

updated: SR 09/14/16 SR 09/15/16

SR 06/30/22 KGC 08/22/24

area previously shown on map(s):

NOTE: This map was prepared for the use of the Washoe County Assessor for assessment and illustrative purposes only. It does not represent a survey of the premises. No liability is assumed as to the sufficiency or accuracy of the data delineated hereon.