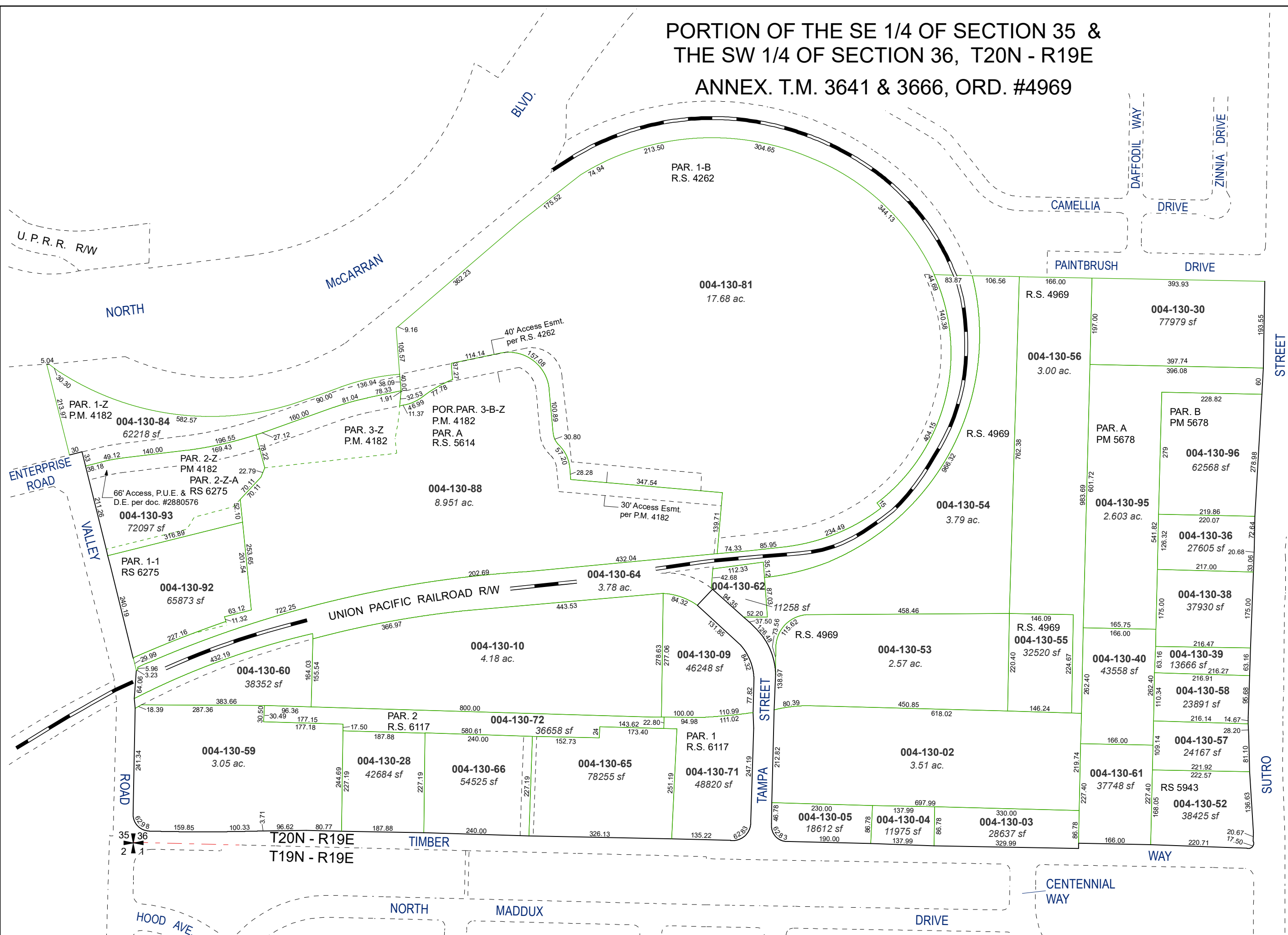
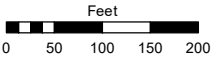


PORTION OF THE SE 1/4 OF SECTION 35 &  
THE SW 1/4 OF SECTION 36, T20N - R19E  
ANNEX. T.M. 3641 & 3666, ORD. #4969

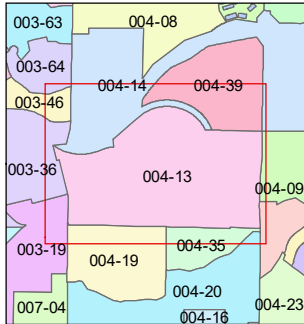
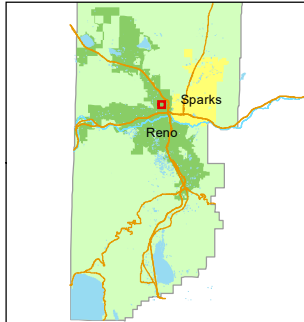


Assessor's Map Number  
**004-13**

STATE OF NEVADA  
**WASHOE COUNTY**  
**ASSESSOR'S OFFICE**  
1001 East Ninth Street, Building D  
Reno, Nevada 89512  
(775) 328-2231



1 inch = 200 feet



created by: TWT 6/6/2012

updated: JRA 6/30/23

area previously shown on map(s):

NOTE: This map was prepared for the use of the Washoe County Assessor for assessment and illustrative purposes only. It does not represent a survey of the premises. No liability is assumed as to the sufficiency or accuracy of the data delineated hereon.