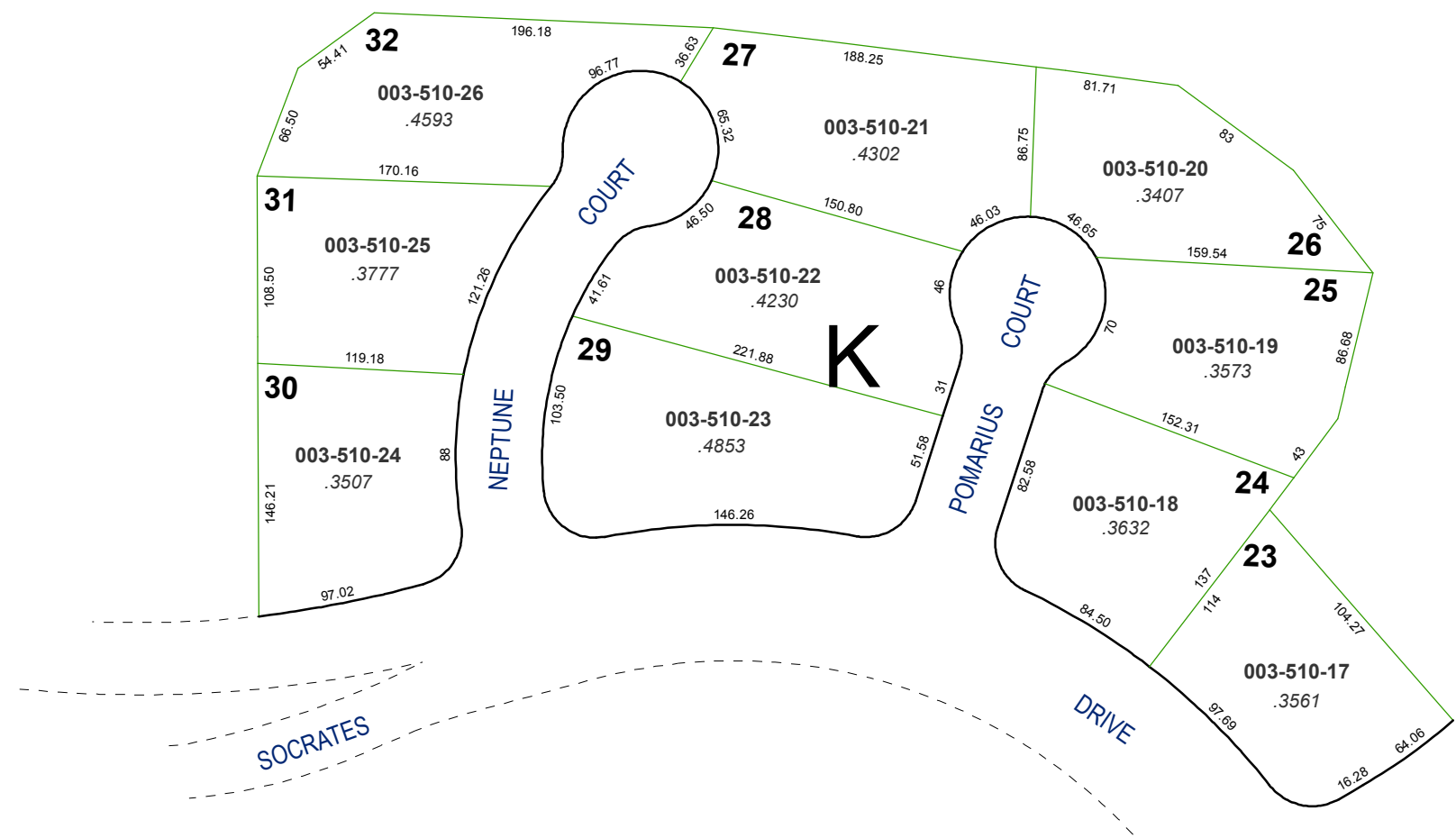


(#2022)  
UNIVERSITY HEIGHTS  
UNIT II, PHASE SIX  
PORTION OF SECTION 35  
T20N - R19E

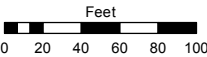


Assessor's Map Number

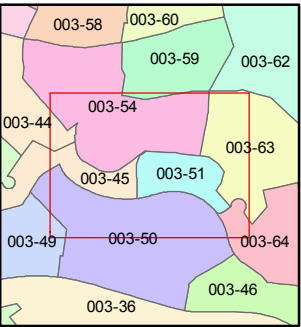
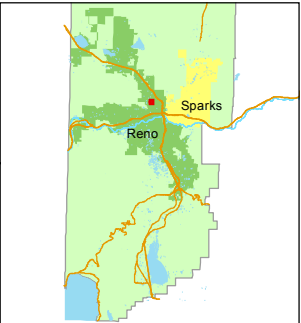
003-51

STATE OF NEVADA  
**WASHOE COUNTY**  
**ASSESSOR'S OFFICE**  
Joshua G. Wilson, Assessor

1001 East Ninth Street  
Building D  
Reno, Nevada 89512  
(775) 328-2231



1 inch = 100 feet



created by: CFB 10/03/2012

last updated:

area previously shown on map(s)

NOTE: This map was prepared for the use of the Washoe County Assessor for assessment and illustrative purposes only. It does not represent a survey of the premises. No liability is assumed as to the sufficiency or accuracy of the data delineated hereon.