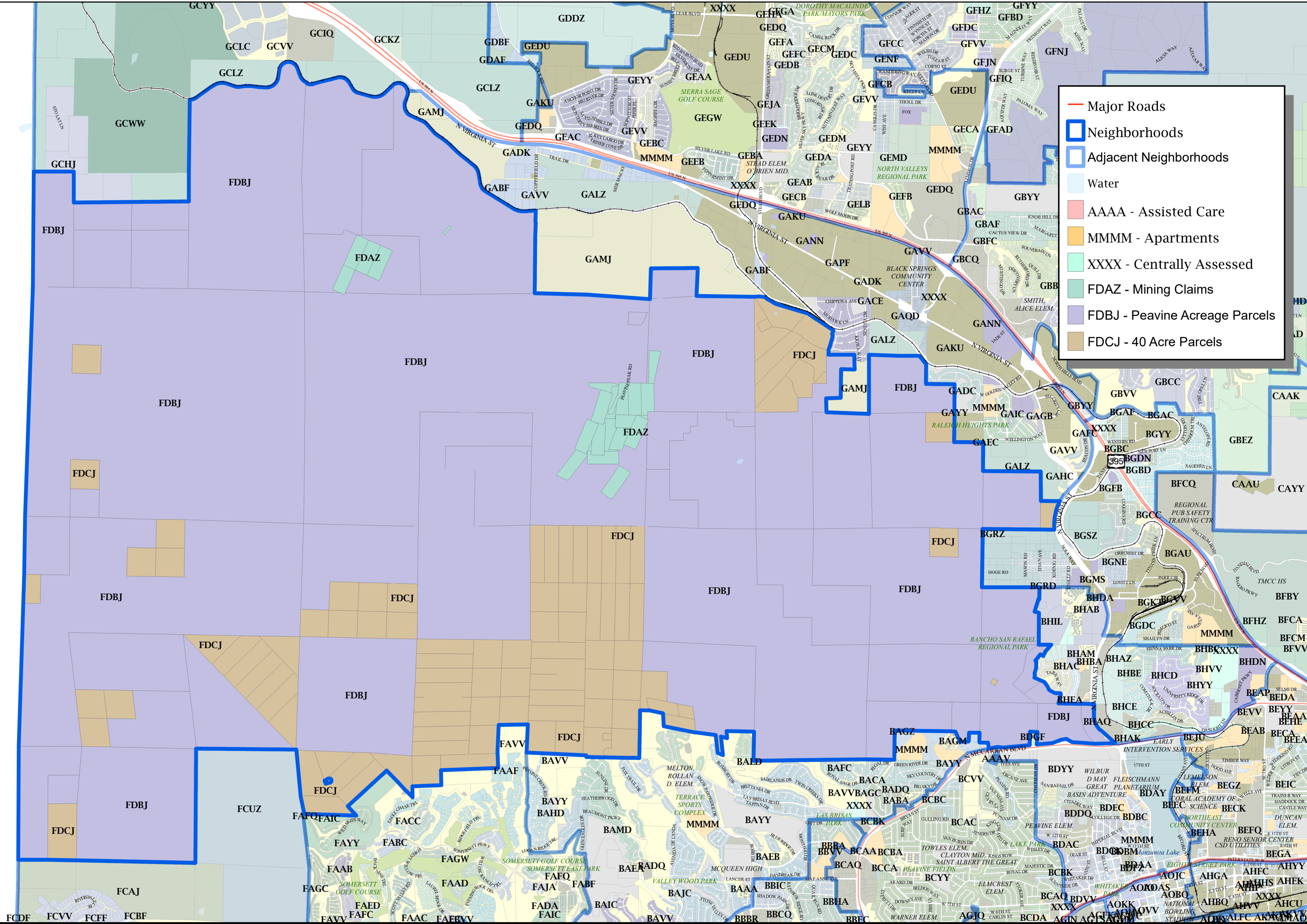


CALIFORNIA

- Major Roads
- Neighborhoods
- Adjacent Neighborhoods
- Water
- AAAA - Assisted Care
- MMMM - Apartments
- XXXX - Centrally Assessed
- FDAZ - Mining Claims
- FDBJ - Peavine Acreage Parcels
- FDCJ - 40 Acre Parcels

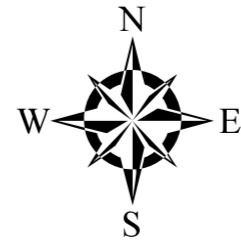



 Washoe County Assessor's Office
 1001 E. 9th St., Bldg. D
 Reno, NV 89512
 (775) 328-2231

Neighborhood Code Map Atlas
 Washoe County, Nevada

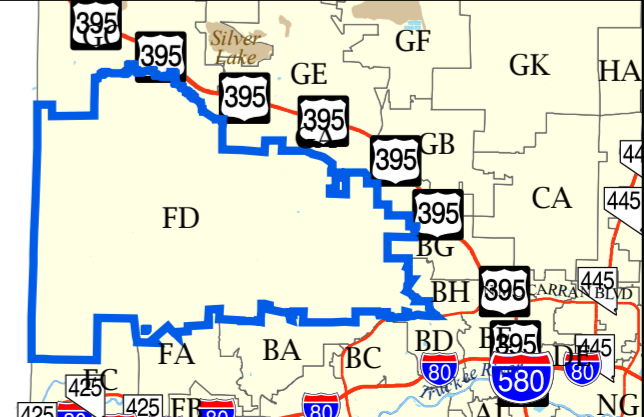
0 1,250 2,500 5,000

Feet
1 inch = 2,499 feet



Aug 08, 2023

Created by: J. Anderson



Neighborhood Code
FD
 Peavine Peak
 General Vicinity

This map was prepared for the use of the Washoe County Assessor for assessment and illustrative purposes only. It does not represent a survey of the premises. No liability is assumed as to the sufficiency or accuracy of the data delineated hereon.