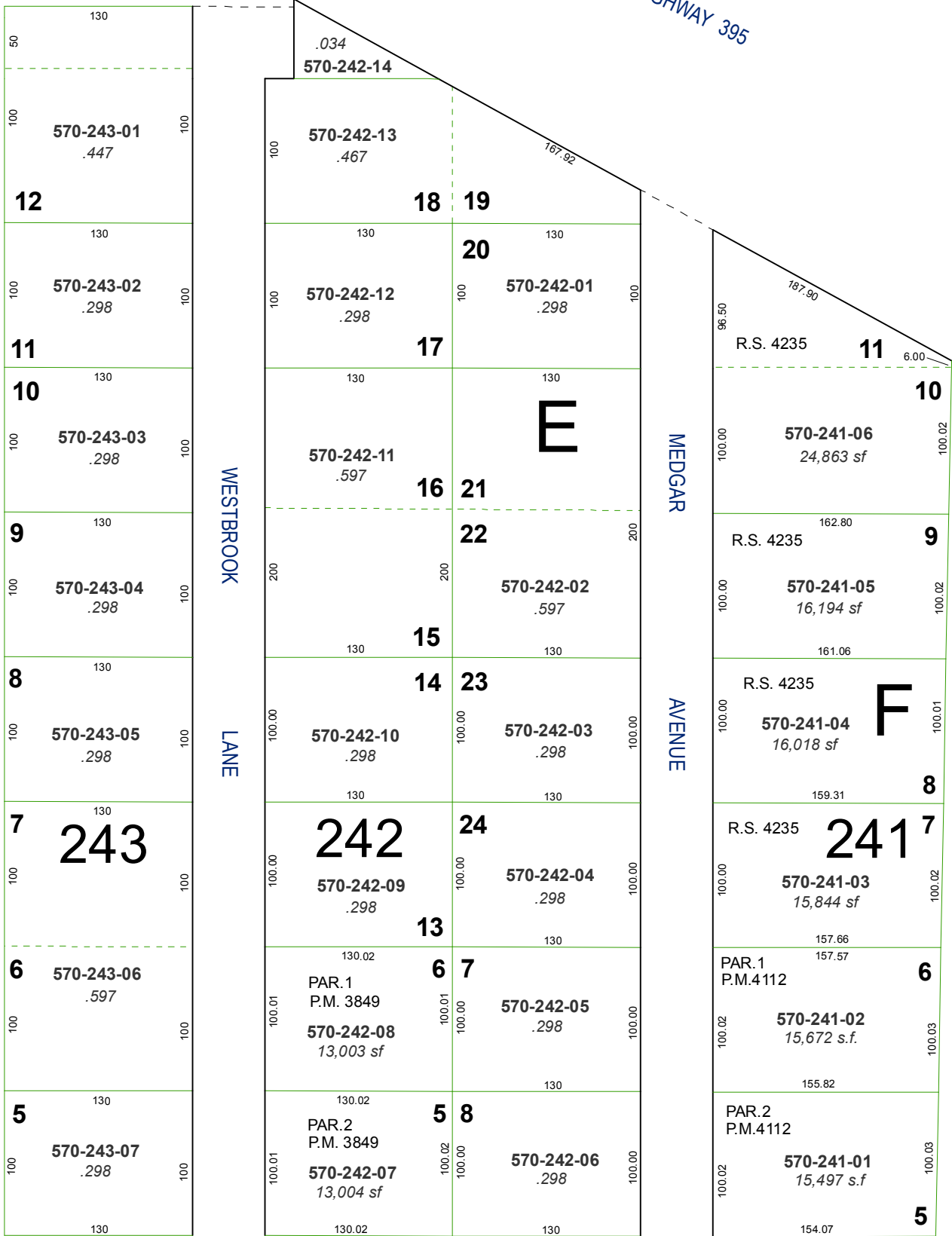


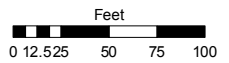
J.E. SWEATT TRACT UNOFF.
 PORTION OF SW 1/4 SEC. 9
 T.20 N.- R. 19 E.



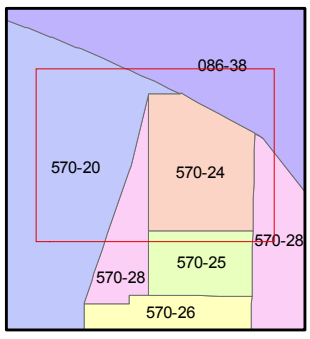
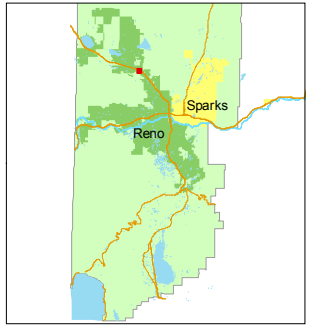
Assessor's Map Number
570-24

STATE OF NEVADA
WASHOE COUNTY
 ASSESSOR'S OFFICE
 Joshua G. Wilson, Assessor

1001 East Ninth Street
 Building D
 Reno, Nevada 89512
 (775) 328-2231



1 inch = 100 feet



created by: CFB 03/10/2011

last updated: _____

area previously shown on map(s)
082-12

NOTE: This map was prepared for the use of the Washoe County Assessor for assessment and illustrative purposes only. It does not represent a survey of the premises. No liability is assumed as to the sufficiency or accuracy of the data delineated hereon.