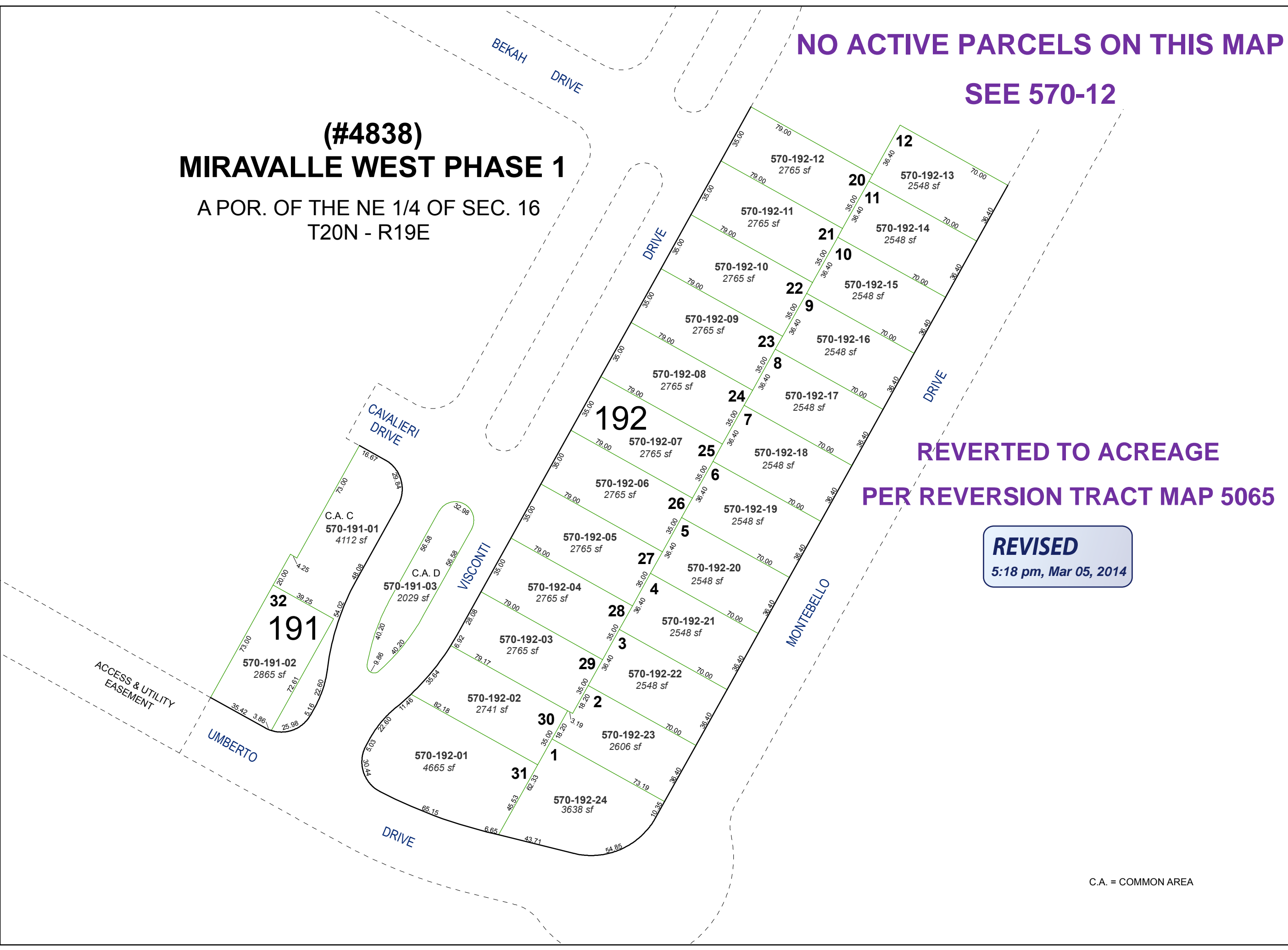


(#4838)
MIRAVALLE WEST PHASE 1
 A POR. OF THE NE 1/4 OF SEC. 16
 T20N - R19E

NO ACTIVE PARCELS ON THIS MAP
SEE 570-12

REVERTED TO ACREAGE
PER REVERSION TRACT MAP 5065

REVISED
 5:18 pm, Mar 05, 2014

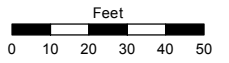


C.A. = COMMON AREA

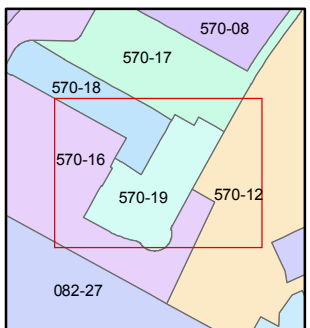
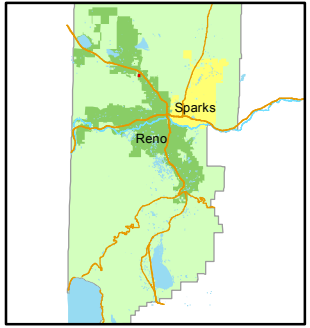
Assessor's Map Number
570-19

STATE OF NEVADA
WASHOE COUNTY
 ASSESSOR'S OFFICE
 Joshua G. Wilson, Assessor

1001 East Ninth Street
 Building D
 Reno, Nevada 89512
 (775) 328-2231



1 inch = 50 feet



created by: NLH 3/22/2012

last updated: _____

area previously shown on map(s)
570-12

NOTE: This map was prepared for the use of the Washoe County Assessor for assessment and illustrative purposes only. It does not represent a survey of the premises. No liability is assumed as to the sufficiency or accuracy of the data delineated hereon.