

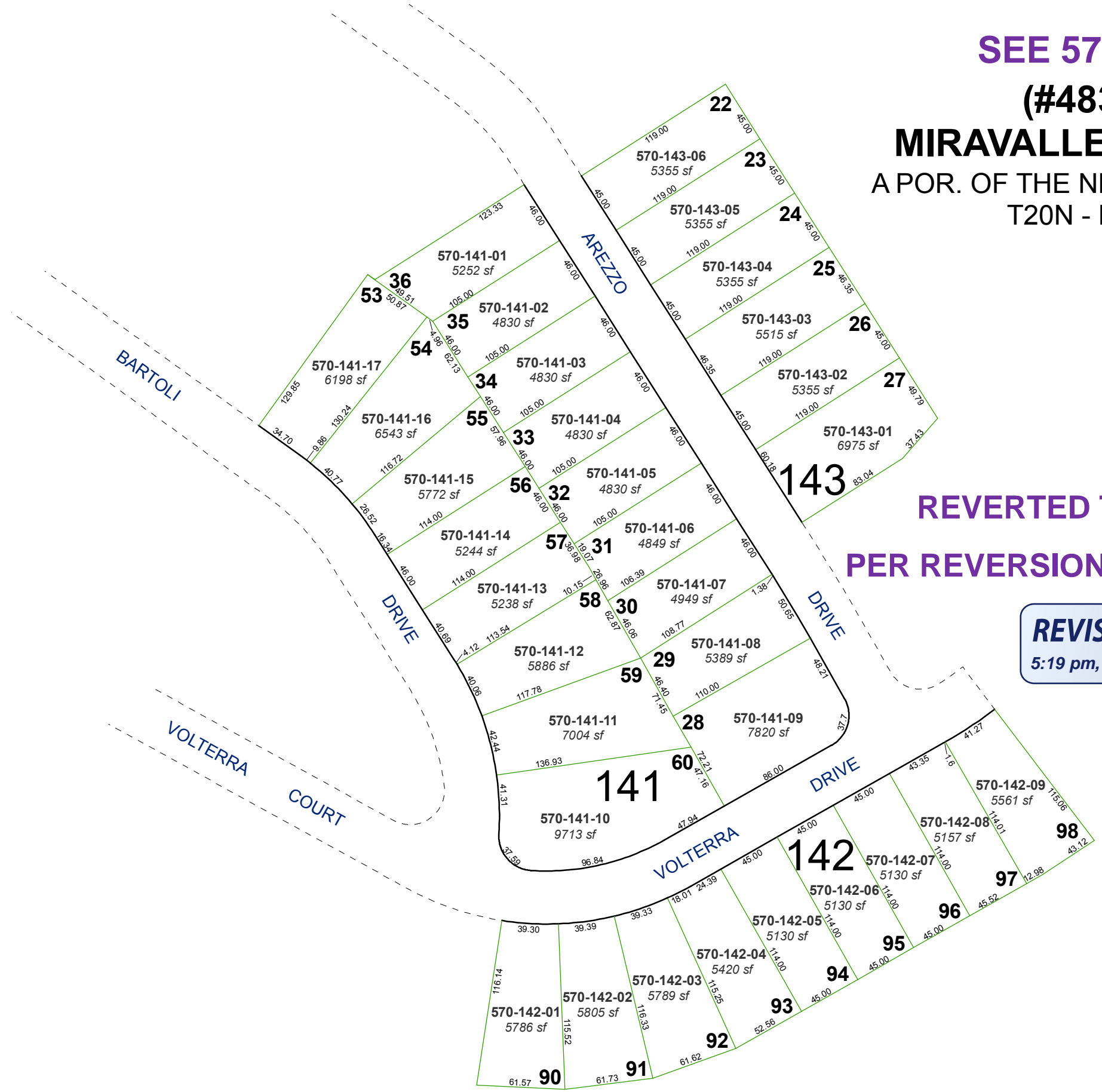
NO ACTIVE PARCELS ON THIS MAP

SEE 570-12

(#4835)

MIRAVALLE PHASE 1

**A POR. OF THE NE 1/4 OF SEC. 16
T20N - R19E**



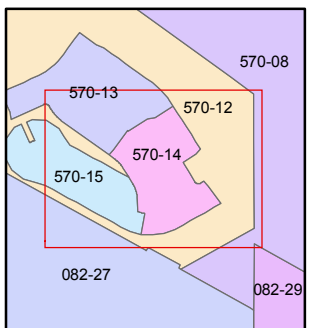
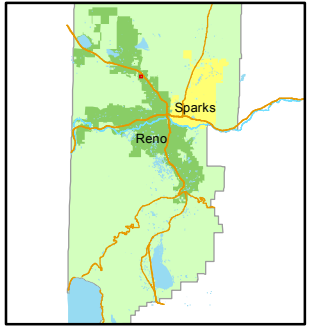
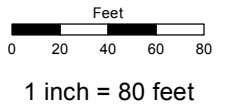
**REVERTED TO ACREAGE
PER REVERSION TRACT MAP 5065**

REVISED
5:19 pm, Mar 05, 2014

Assessor's Map Number
570-14

STATE OF NEVADA
WASHOE COUNTY
ASSESSOR'S OFFICE
Joshua G. Wilson, Assessor

1001 East Ninth Street
Building D
Reno, Nevada 89512
(775) 328-2231



created by: NLH 3/22/2012
last updated: _____
area previously shown on map(s)
570-08

NOTE: This map was prepared for the use of the Washoe County Assessor for assessment and illustrative purposes only. It does not represent a survey of the premises. No liability is assumed as to the sufficiency or accuracy of the data delineated herein.