

550-64-S3

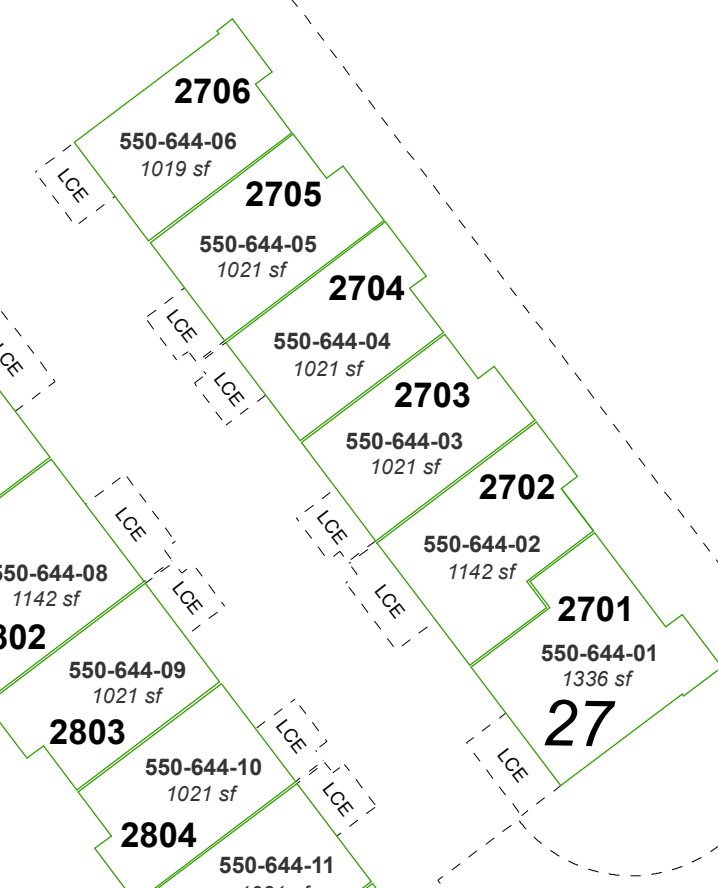
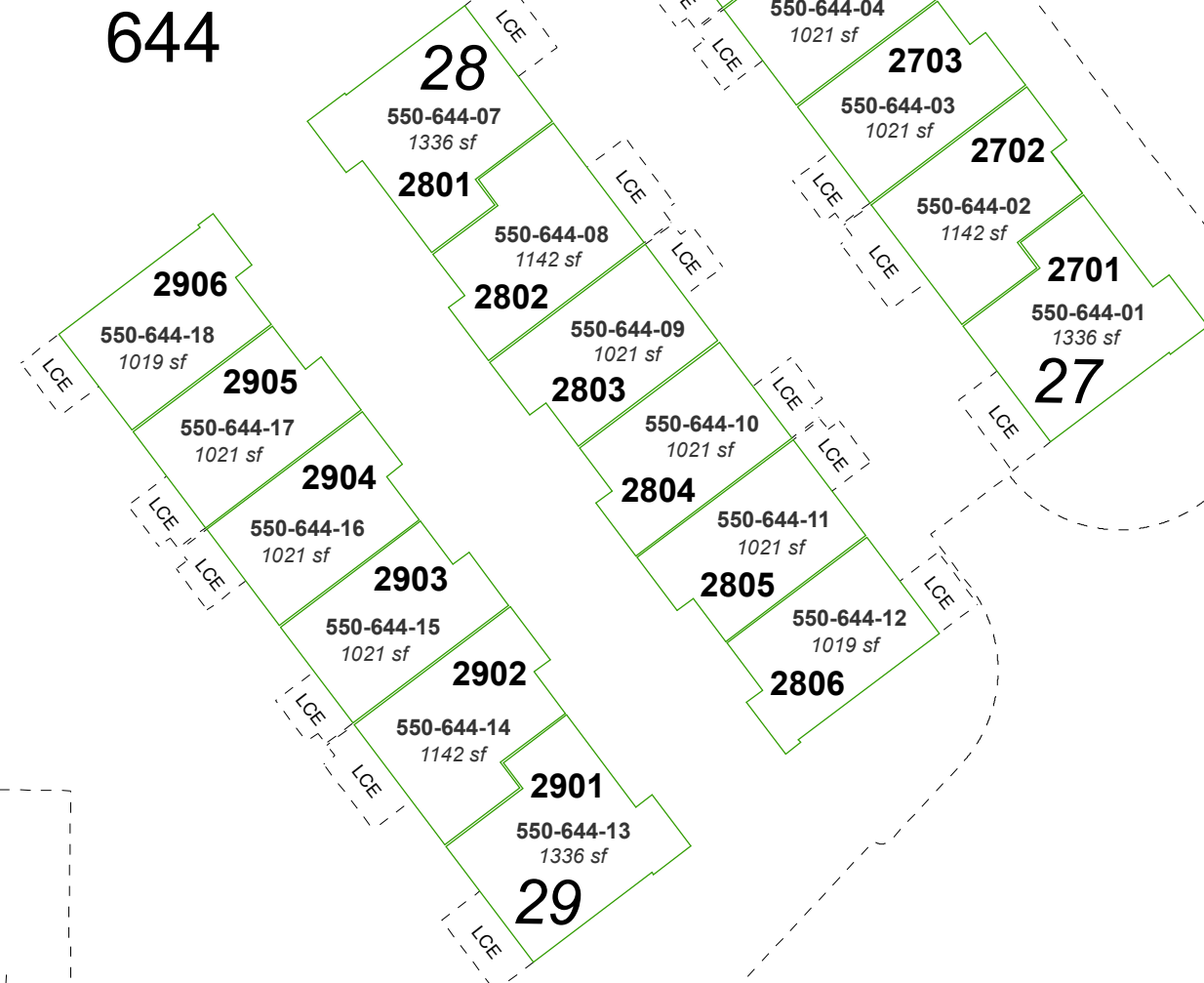
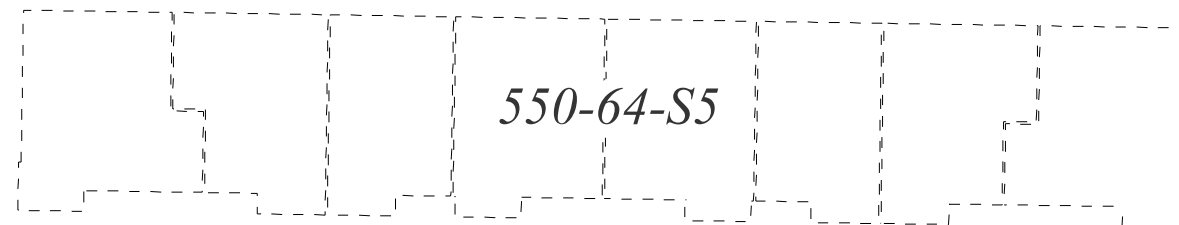
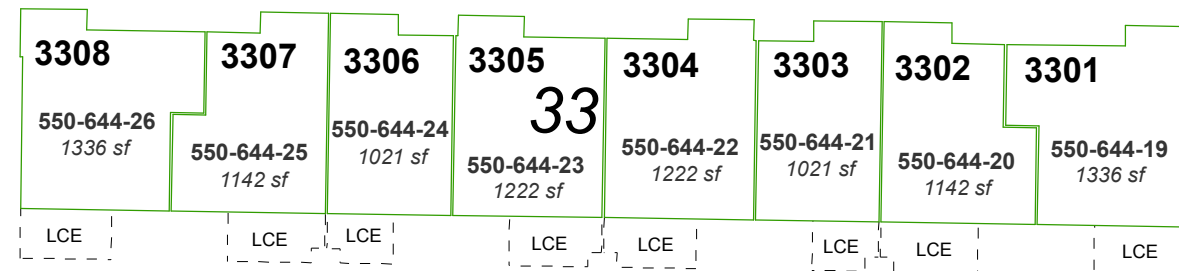
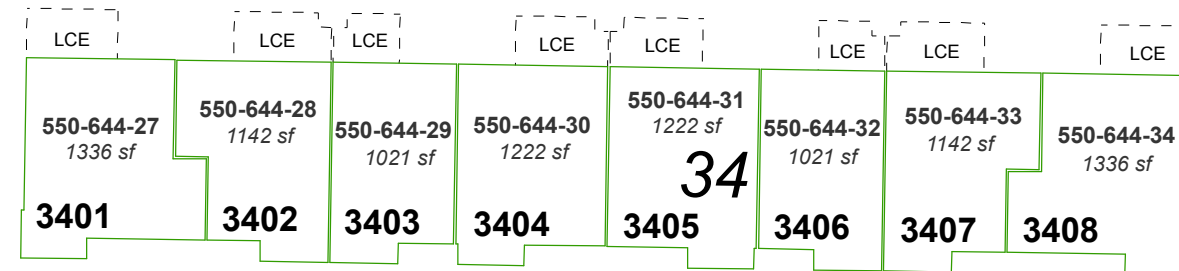
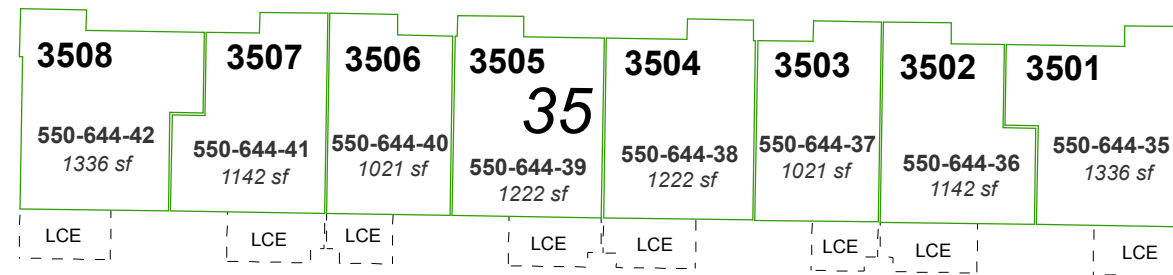
(#5093) BUNGALOWS AT SKY VISTA - PHASE 2 A CONDOMINIUM SUBDIVISION PORTION OF SE ¼ SECTION 32, T21N - R19E

28 = BUILDING NUMBER

LCE = LIMITED COMMON ELEMENT

Total square footage of each lot includes all internal living space (garage, porch and living area). It does not include the Limited Common Element (LCE).

See Page 550-64 for unit dimensions and square footage details.

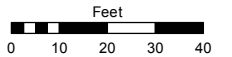


Assessor's Map Number

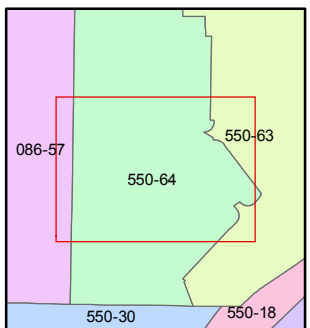
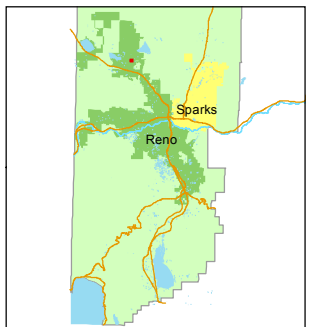
550-64-S4

STATE OF NEVADA
WASHOE COUNTY
ASSESSOR'S OFFICE
Joshua G. Wilson, Assessor

1001 East Ninth Street
Building D
Reno, Nevada 89512
(775) 328-2231



1 inch = 40 feet



created by: KSB 9/23/2014

last updated: _____

area previously shown on map(s)

550-63

NOTE: This map was prepared for the use of the Washoe County Assessor for assessment and illustrative purposes only. It does not represent a survey of the premises. No liability is assumed as to the sufficiency or accuracy of the data delineated hereon.