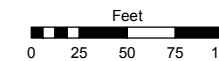


Assessor's Map Number

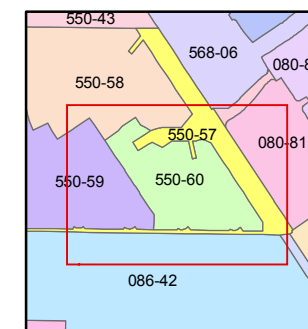
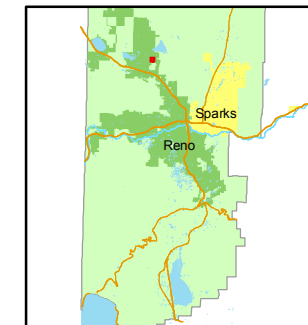
550-60

STATE OF NEVADA
WASHOE COUNTY
ASSESSOR'S OFFICE
Joshua G. Wilson, Assessor

1001 East Ninth Street
Building D
Reno, Nevada 89512
(775) 328-2231



1 inch = 100 feet



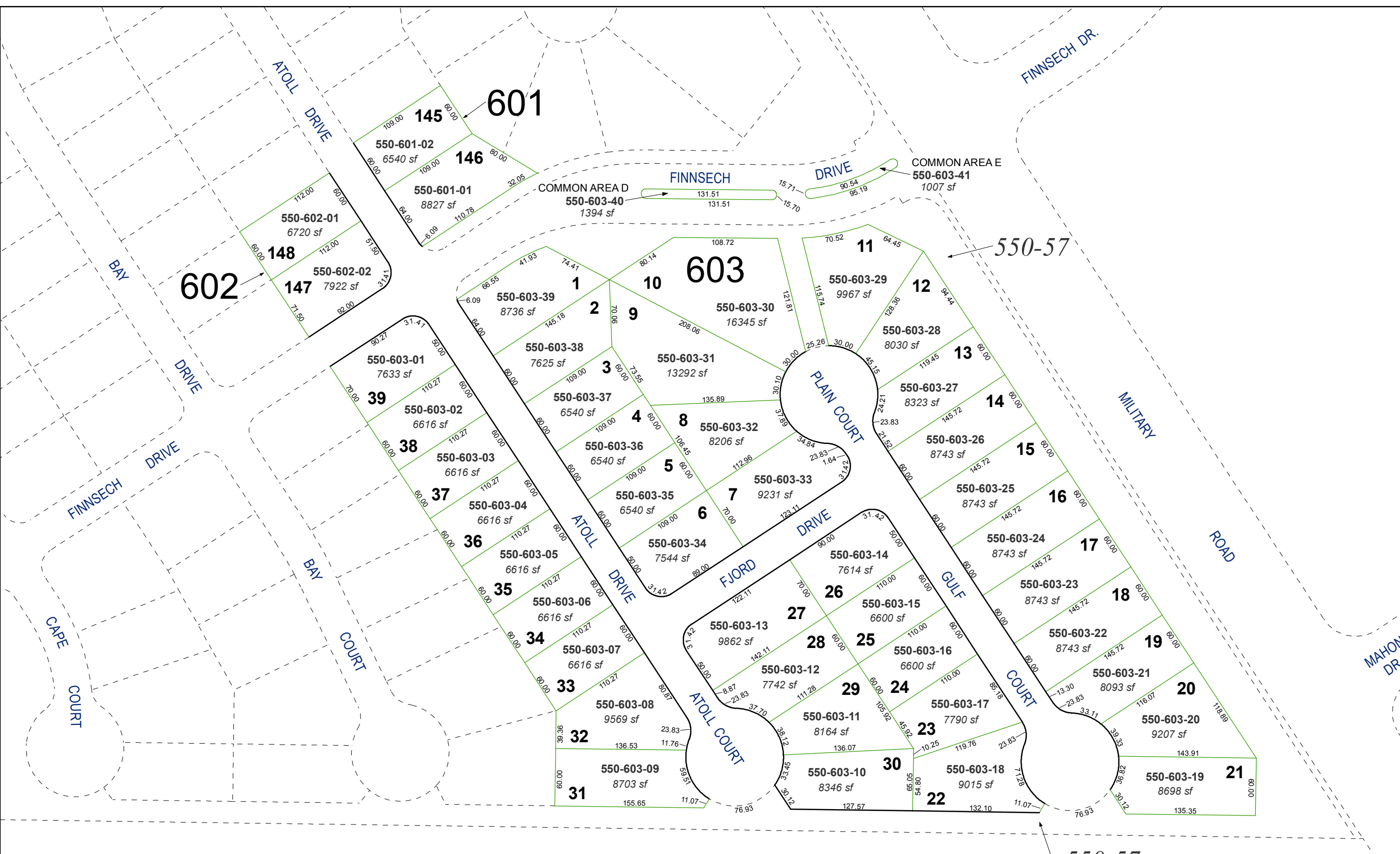
created by: KSB 3/18/11

last updated: _____

area previously shown on map(s)

550-01, 086-42

NOTE: This map was prepared for the use of the Washoe County Assessor for assessment and illustrative purposes only. It does not represent a survey of the premises. No liability is assumed as to the sufficiency or accuracy of the data delineated hereon.



(#4818)
SILVER VISTA VILLAGE
PORTION OF SW 1/4 SECTION 33
T21N - R19E

550-57