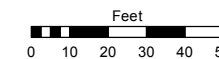
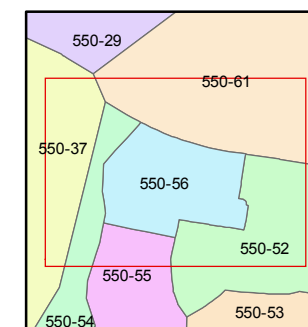
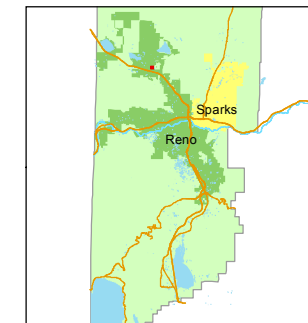


STATE OF NEVADA
WASHOE COUNTY
ASSESSOR'S OFFICE
Michael E. Clark, Assessor

1001 East Ninth Street
Building D
Reno, Nevada 89512
(775) 328-2231



1 inch = 50 feet



created by: JMO 04/22/2016

last updated: _____

area previously shown on map(s)

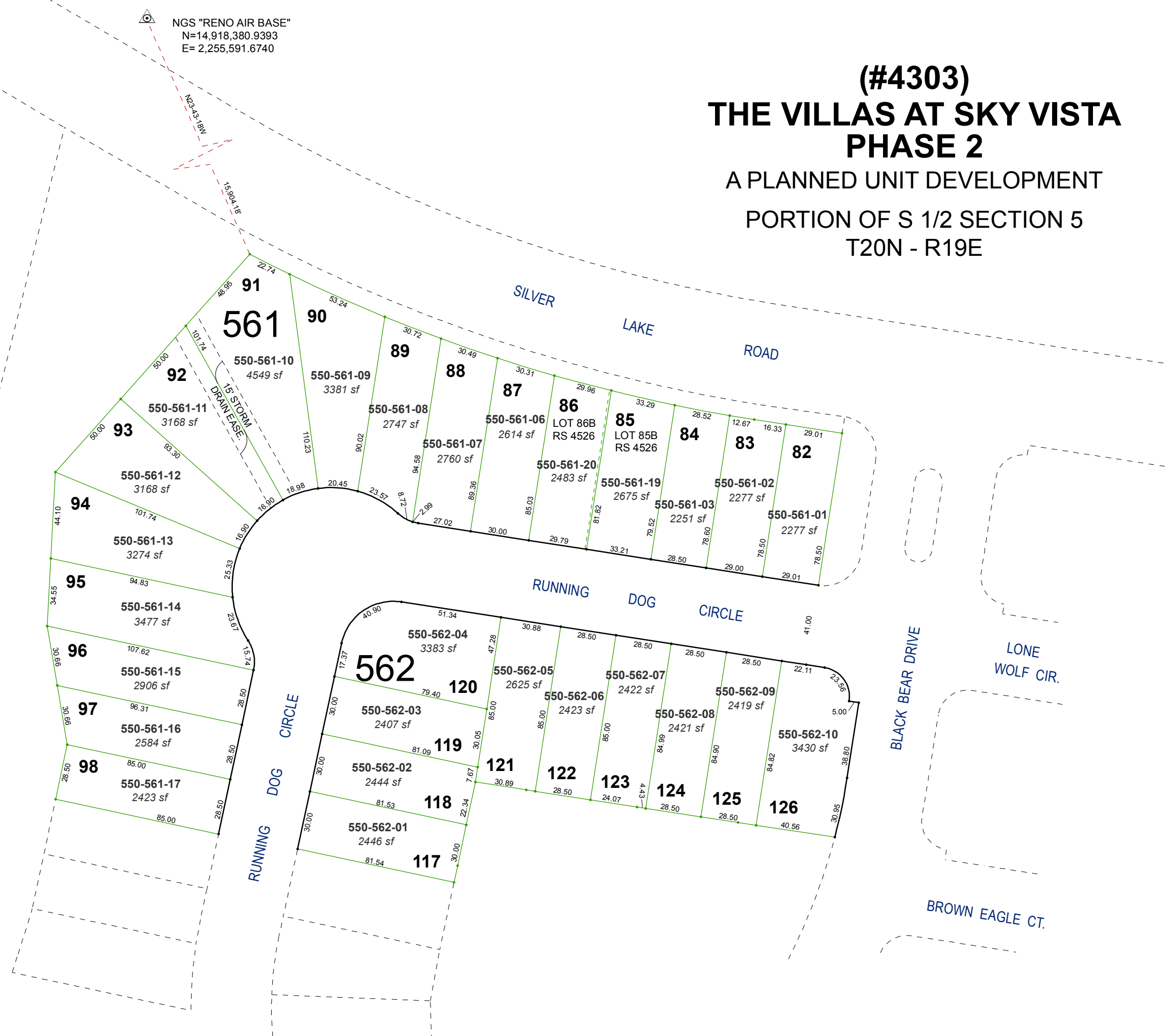
550-02

NOTE: This map was prepared for the use of the Washoe County Assessor for assessment and illustrative purposes only. It does not represent a survey of the premises. No liability is assumed as to the sufficiency or accuracy of the data delineated hereon.

(#4303) THE VILLAS AT SKY VISTA PHASE 2

A PLANNED UNIT DEVELOPMENT

PORTION OF S 1/2 SECTION 5 T20N - R19E



NGS "RENO AIR BASE"
N=14,918,380.9393
E= 2,255,591.6740

561

562

SILVER LAKE ROAD

RUNNING DOG CIRCLE

BLACK BEAR DRIVE

LONE WOLF CIR.

BROWN EAGLE CT.

15' STORM DRAIN EASE.

- 91 550-561-10 4549 sf
- 92 550-561-11 3168 sf
- 93 550-561-12 3168 sf
- 94 550-561-13 3274 sf
- 95 550-561-14 3477 sf
- 96 550-561-15 2906 sf
- 97 550-561-16 2584 sf
- 98 550-561-17 2423 sf
- 89 550-561-09 3381 sf
- 88 550-561-08 2747 sf
- 87 550-561-07 2760 sf
- 86 LOT 86B RS 4526 550-561-06 2614 sf
- 85 LOT 85B RS 4526 550-561-20 2483 sf
- 84 550-561-19 2675 sf
- 83 550-561-03 2251 sf
- 82 550-561-02 2277 sf
- 550-561-01 2277 sf
- 550-562-04 3383 sf
- 120 550-562-05 2625 sf
- 550-562-06 2423 sf
- 550-562-07 2422 sf
- 550-562-08 2421 sf
- 550-562-09 2419 sf
- 550-562-10 3430 sf
- 119 550-562-03 2407 sf
- 121 550-562-02 2444 sf
- 122 550-562-01 2446 sf
- 118 550-562-04 3383 sf
- 123 550-562-05 2625 sf
- 124 550-562-06 2423 sf
- 125 550-562-07 2422 sf
- 126 550-562-08 2421 sf