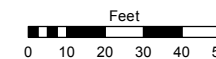


Assessor's Map Number

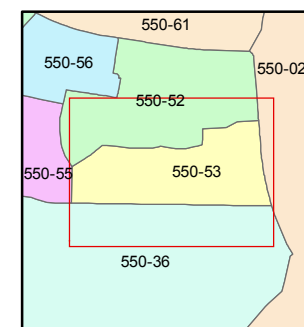
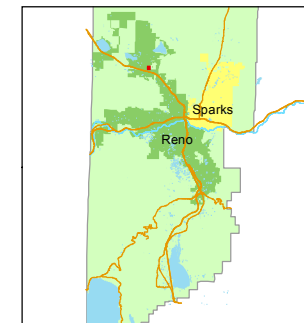
550-53

STATE OF NEVADA
WASHOE COUNTY
ASSESSOR'S OFFICE
Michael E. Clark, Assessor

1001 East Ninth Street
Building D
Reno, Nevada 89512
(775) 328-2231



1 inch = 50 feet



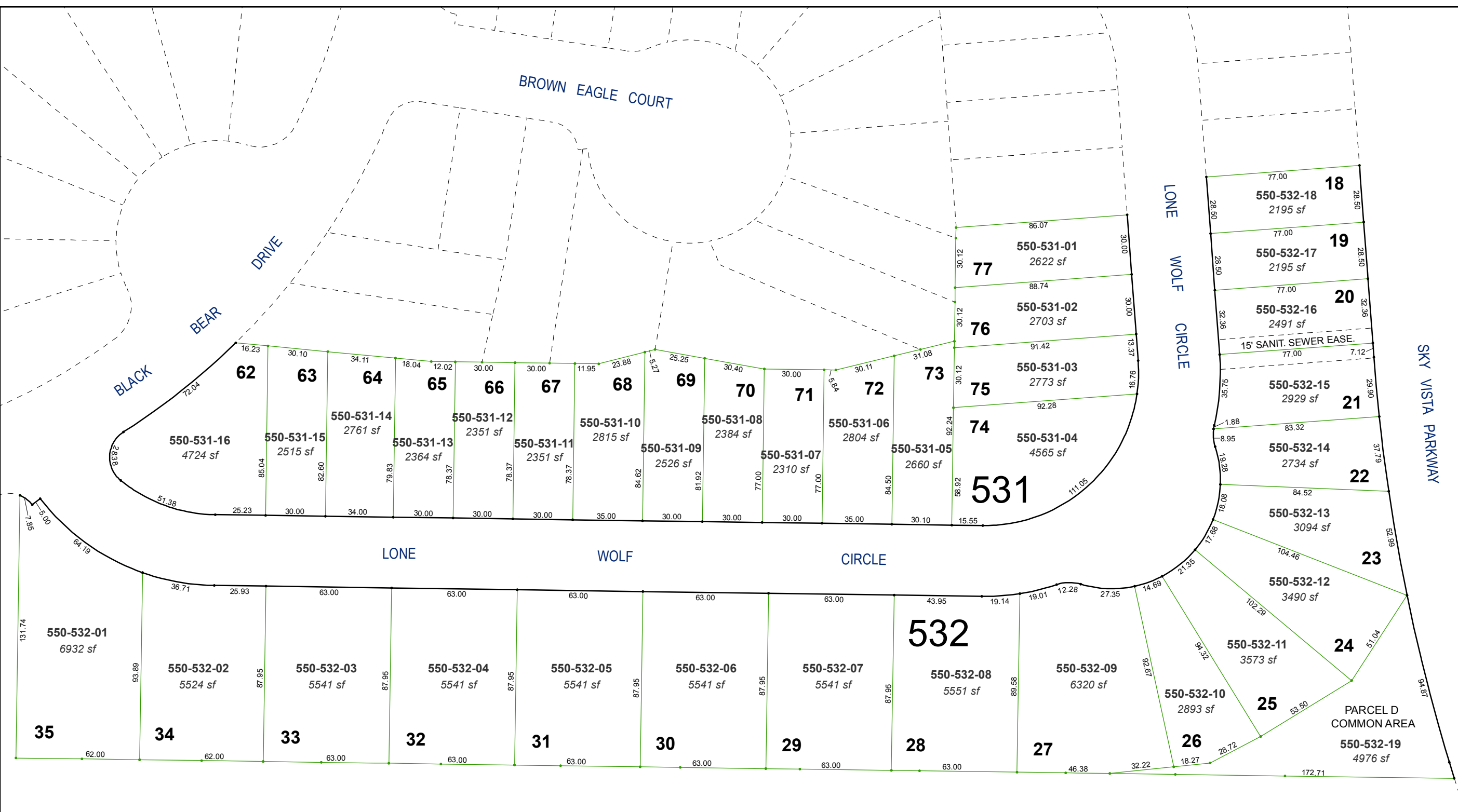
created by: JMO 04/19/2016

last updated: _____

area previously shown on map(s)

550-02

NOTE: This map was prepared for the use of the Washoe County Assessor for assessment and illustrative purposes only. It does not represent a survey of the premises. No liability is assumed as to the sufficiency or accuracy of the data delineated hereon.



(#4177)
THE VILLAS AT SKY VISTA - PHASE 1
A PLANNED UNIT DEVELOPMENT
PORTION OF S 1/2 SEC. 5
T20N - R19E