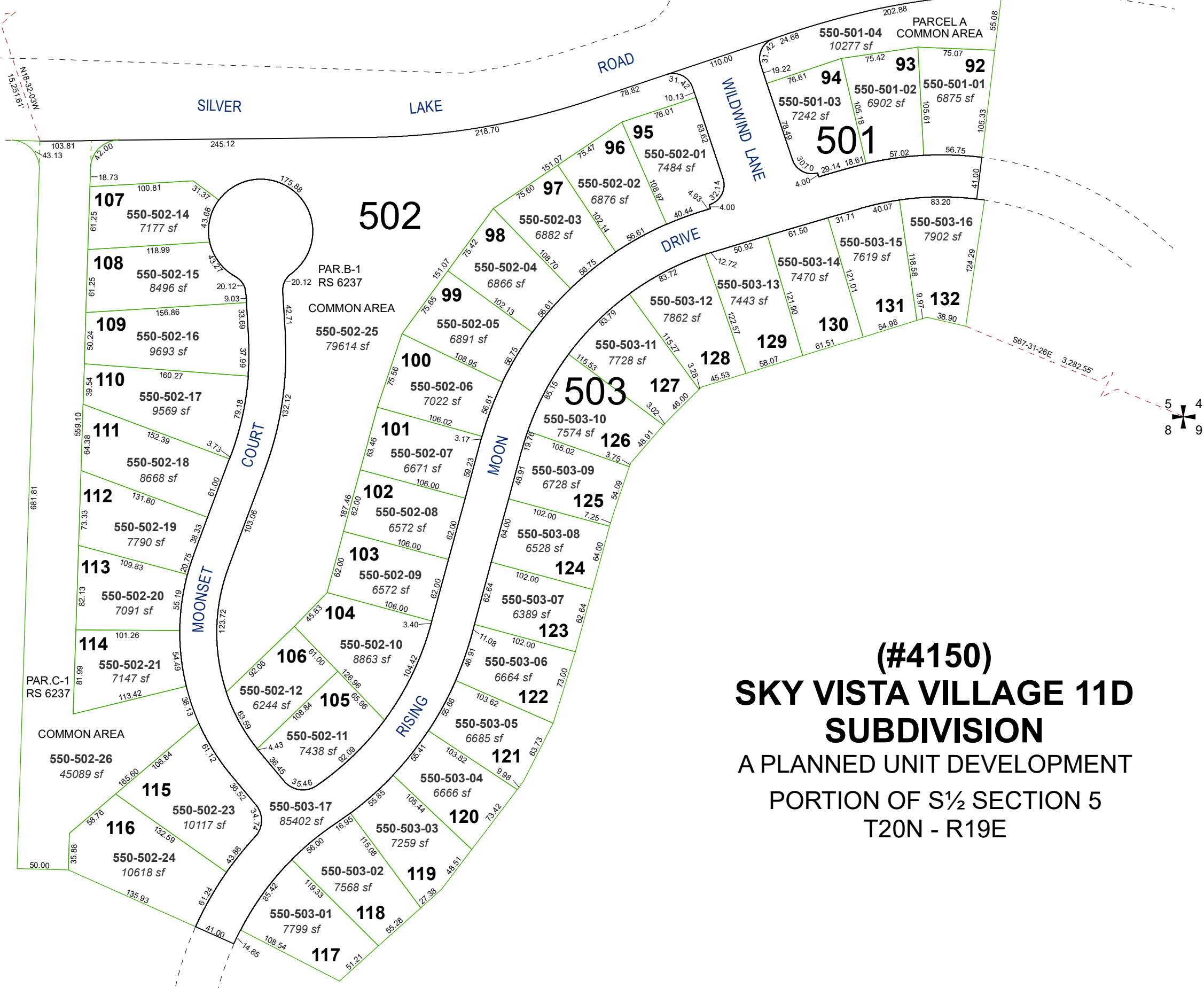


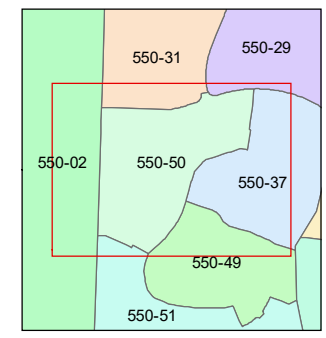
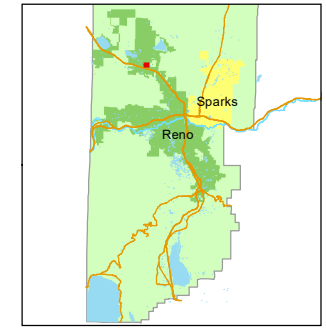
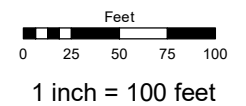
NGS "RENO AIR BASE"
 N=14,918,380.9393
 E= 2,255,591.6740



(#4150)
SKY VISTA VILLAGE 11D
SUBDIVISION
 A PLANNED UNIT DEVELOPMENT
 PORTION OF S½ SECTION 5
 T20N - R19E

Assessor's Map Number
550-50

STATE OF NEVADA
WASHOE COUNTY
ASSESSOR'S OFFICE
 1001 East Ninth Street, Building D
 Reno, Nevada 89512
 (775) 328-2231



created by: JMO 04/15/2016
 updated: SR 03/17/21
 area previously shown on map(s):
550-02

NOTE: This map was prepared for the use of the Washoe County Assessor for assessment and illustrative purposes only. It does not represent a survey of the premises. No liability is assumed as to the sufficiency or accuracy of the data delineated hereon.