

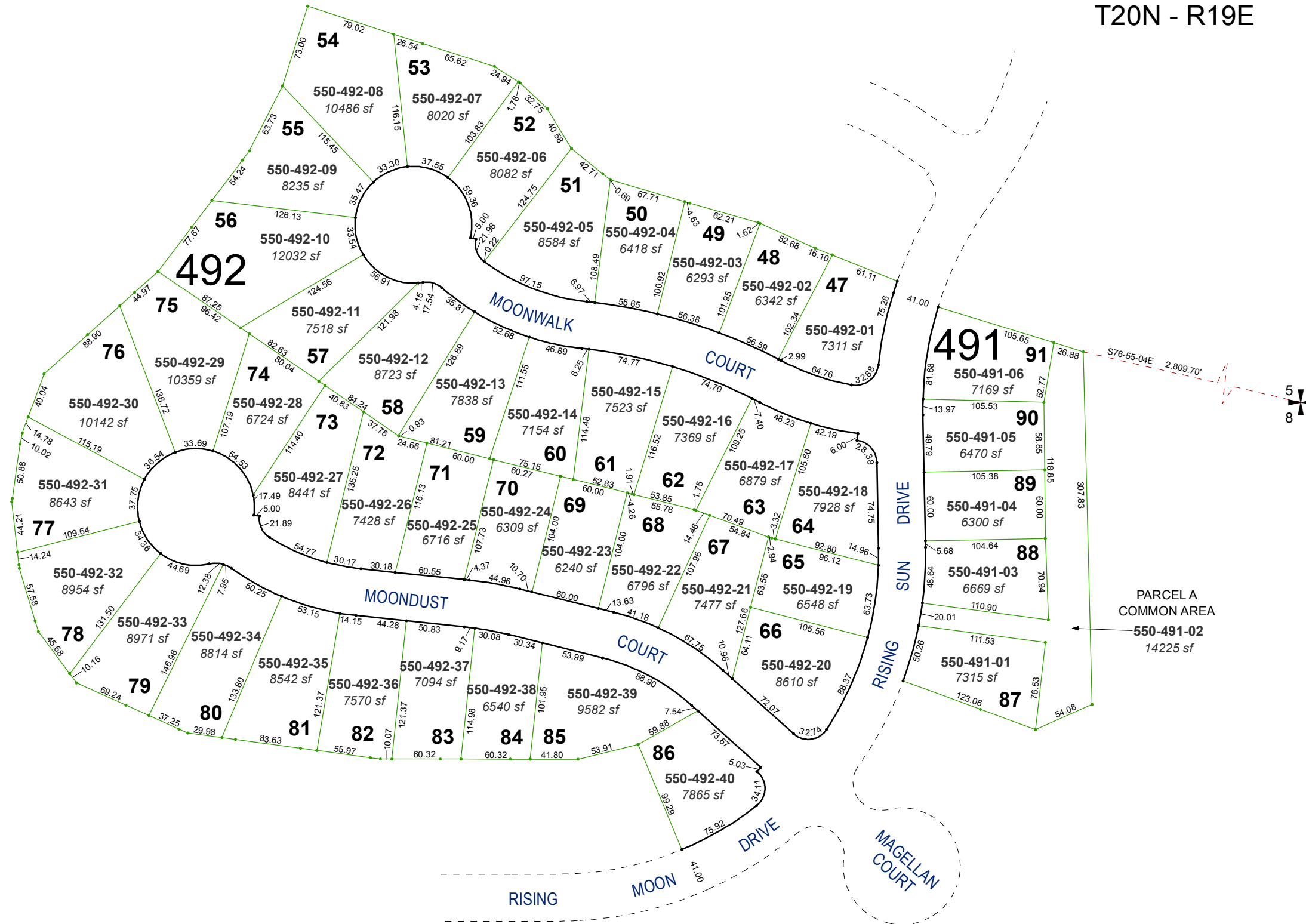
GPS "RENO AIR BASE"
N=14,918,380.9393
E= 2,255,591.6740



N 19.4456N 15,993.16'

(#4073) SKY VISTA VILLAGE 11B SUBDIVISION

A PLANNED UNIT DEVELOPMENT
PORTION OF S 1/2 OF SECTION 5
T20N - R19E

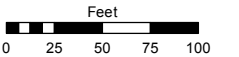


Assessor's Map Number

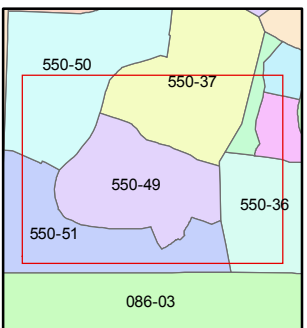
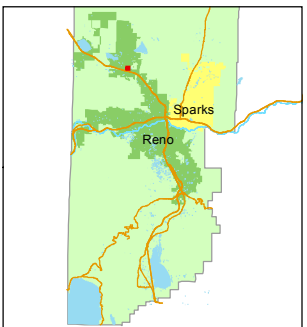
550-49

STATE OF NEVADA
WASHOE COUNTY
ASSESSOR'S OFFICE
Michael E. Clark, Assessor

1001 East Ninth Street
Building D
Reno, Nevada 89512
(775) 328-2231



1 inch = 100 feet



created by: JMO 04/14/2016

last updated: _____

area previously shown on map(s)

550-02

NOTE: This map was prepared for the use of the Washoe County Assessor for assessment and illustrative purposes only. It does not represent a survey of the premises. No liability is assumed as to the sufficiency or accuracy of the data delineated hereon.