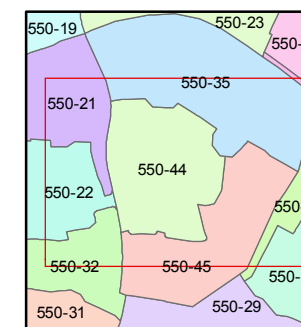
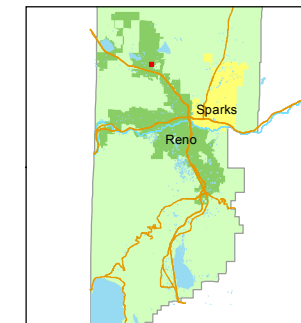


STATE OF NEVADA  
**WASHOE COUNTY**  
ASSESSOR'S OFFICE  
Michael E. Clark, Assessor

1001 East Ninth Street  
Building D  
Reno, Nevada 89512  
(775) 328-2231



1 inch = 100 feet



created by: JMO 04/08/2016

last updated: \_\_\_\_\_

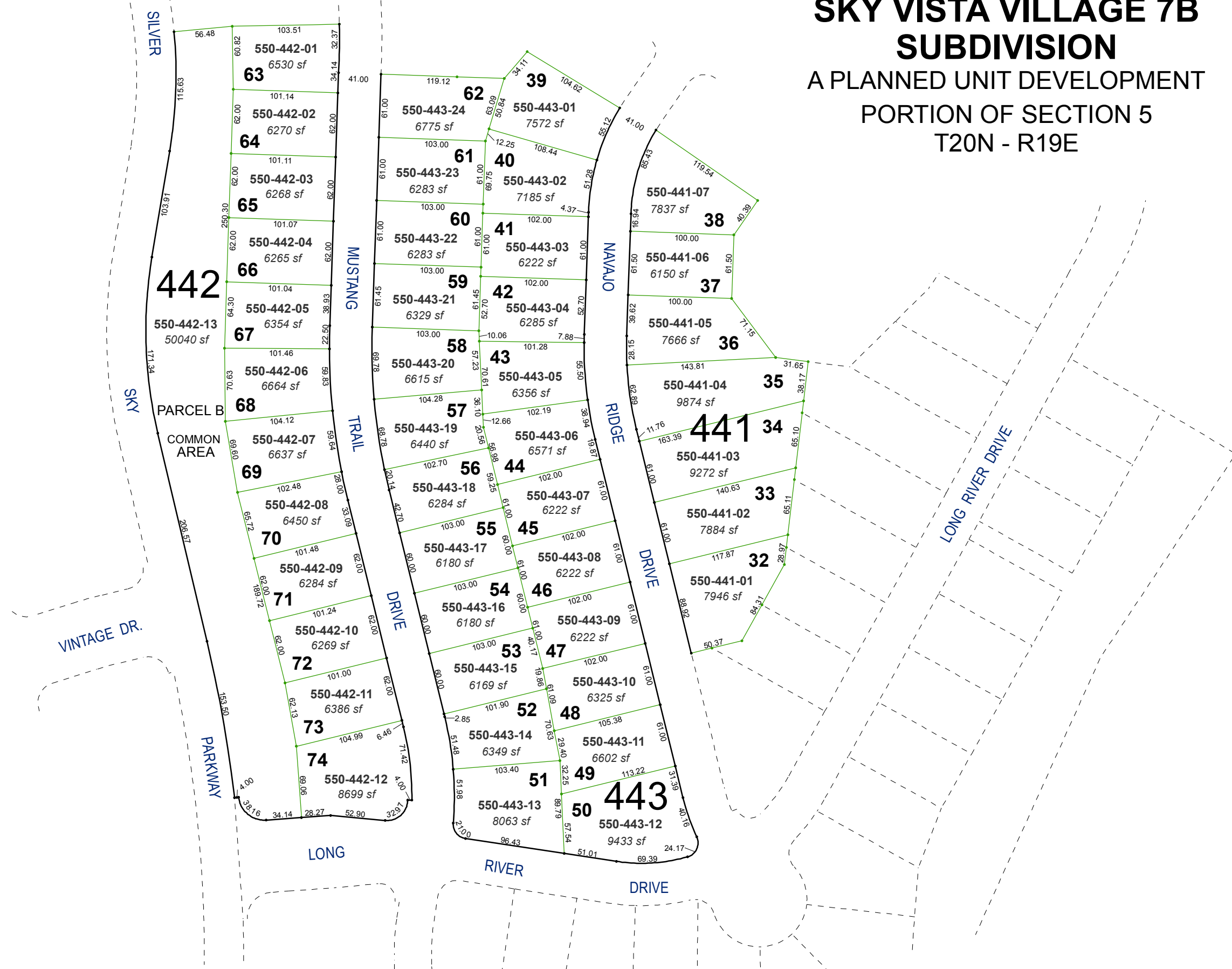
area previously shown on map(s)

550-01

NOTE: This map was prepared for the use of the Washoe County Assessor for assessment and illustrative purposes only. It does not represent a survey of the premises. No liability is assumed as to the sufficiency or accuracy of the data delineated hereon.

# (#4030) SKY VISTA VILLAGE 7B SUBDIVISION

A PLANNED UNIT DEVELOPMENT  
PORTION OF SECTION 5  
T20N - R19E



**442**  
550-442-13  
50040 sf  
PARCEL B  
COMMON AREA

**441 34**

**443**

- 550-442-01 6530 sf
- 550-442-02 6270 sf
- 550-442-03 6268 sf
- 550-442-04 6265 sf
- 550-442-05 6354 sf
- 550-442-06 6664 sf
- 550-442-07 6637 sf
- 550-442-08 6450 sf
- 550-442-09 6284 sf
- 550-442-10 6269 sf
- 550-442-11 6386 sf
- 550-442-12 8699 sf

- 550-443-24 6775 sf
- 550-443-23 6283 sf
- 550-443-22 6283 sf
- 550-443-21 6329 sf
- 550-443-20 6615 sf
- 550-443-19 6440 sf
- 550-443-18 6284 sf
- 550-443-17 6180 sf
- 550-443-16 6180 sf
- 550-443-15 6169 sf
- 550-443-14 6349 sf
- 550-443-13 8063 sf
- 550-443-25 7572 sf
- 550-443-26 7185 sf
- 550-443-27 6222 sf
- 550-443-28 6285 sf
- 550-443-29 6356 sf
- 550-443-30 6571 sf
- 550-443-31 6222 sf
- 550-443-32 6222 sf
- 550-443-33 6325 sf
- 550-443-34 6602 sf
- 550-443-35 9433 sf

- 550-441-07 7837 sf
- 550-441-06 6150 sf
- 550-441-05 7666 sf
- 550-441-04 9874 sf
- 550-441-03 9272 sf
- 550-441-02 7884 sf
- 550-441-01 7946 sf
- 550-443-36 7666 sf
- 550-443-37 6150 sf
- 550-443-38 7837 sf
- 550-443-39 7572 sf
- 550-443-40 7185 sf
- 550-443-41 6222 sf
- 550-443-42 6285 sf
- 550-443-43 6356 sf
- 550-443-44 6571 sf
- 550-443-45 6222 sf
- 550-443-46 6325 sf
- 550-443-47 6602 sf
- 550-443-48 9433 sf