

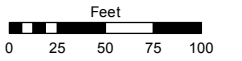
NGS "RENO AIR BASE"  
N=14,918,380.939  
E= 2,255,591.674

Assessor's Map Number

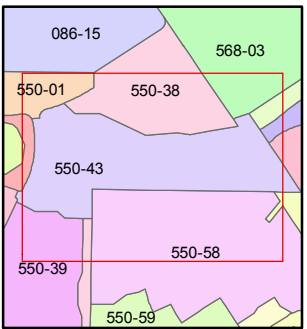
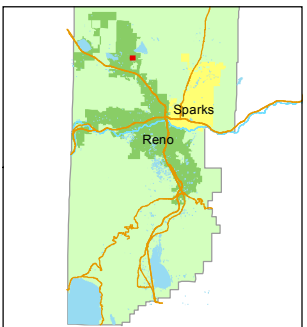
**550-43**

STATE OF NEVADA  
**WASHOE COUNTY**  
ASSESSOR'S OFFICE  
Michael E. Clark, Assessor

1001 East Ninth Street  
Building D  
Reno, Nevada 89512  
(775) 328-2231



1 inch = 100 feet



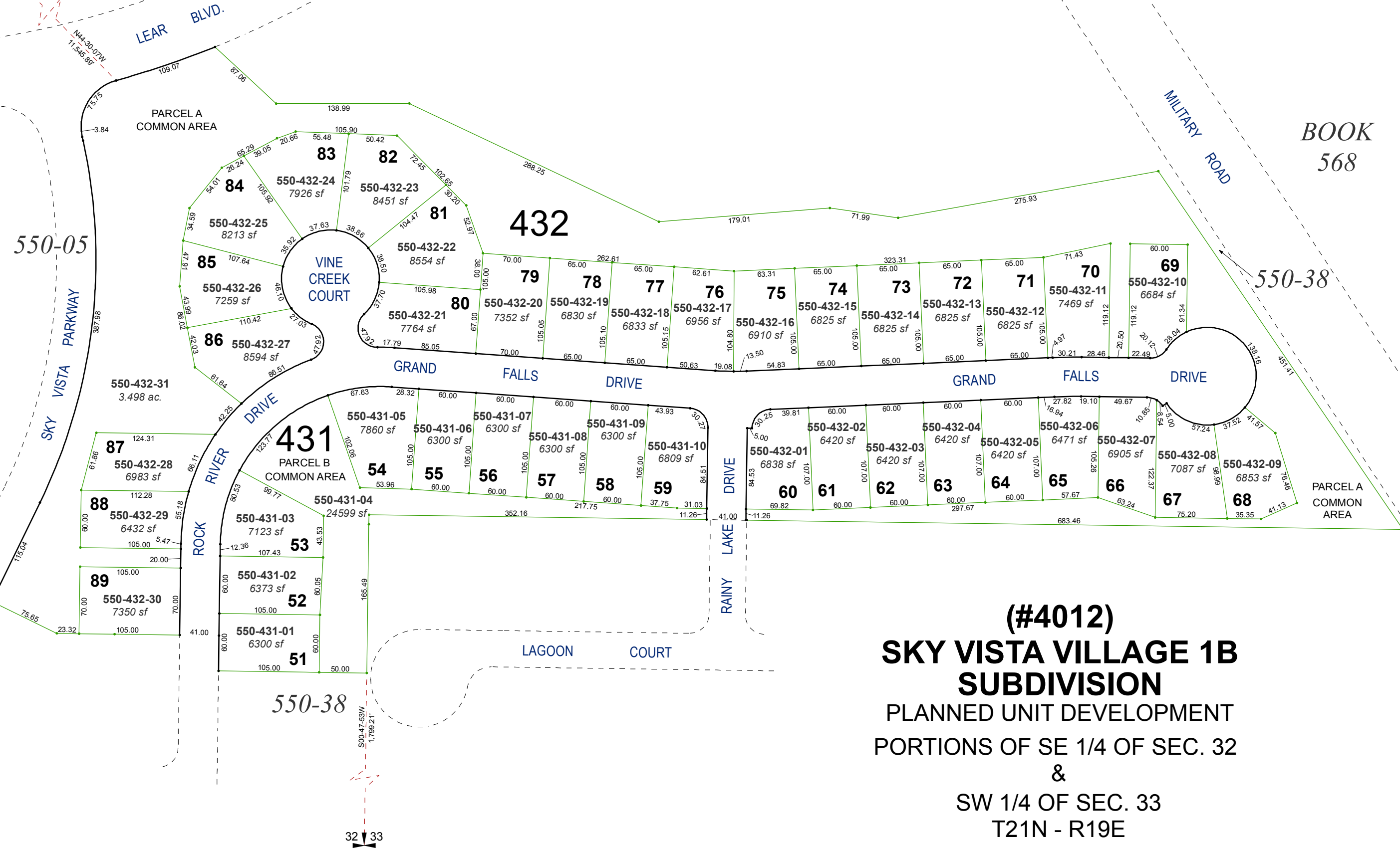
created by: JMO 04/08/2016

last updated: \_\_\_\_\_

area previously shown on map(s)

550-38

NOTE: This map was prepared for the use of the Washoe County Assessor for assessment and illustrative purposes only. It does not represent a survey of the premises. No liability is assumed as to the sufficiency or accuracy of the data delineated hereon.



**(#4012)**  
**SKY VISTA VILLAGE 1B**  
**SUBDIVISION**  
PLANNED UNIT DEVELOPMENT  
PORTIONS OF SE 1/4 OF SEC. 32  
&  
SW 1/4 OF SEC. 33  
T21N - R19E

BOOK  
568

550-38

550-38

32 33