

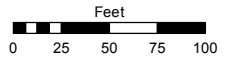
**(#4011)**  
**SKY VISTA VILLAGE 6C**  
**SUBDIVISION**  
 PLANNED UNIT DEVELOPMENT  
 PORTION OF SECTION 5  
 T20N - R19E

Assessor's Map Number

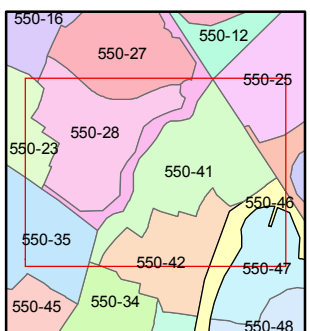
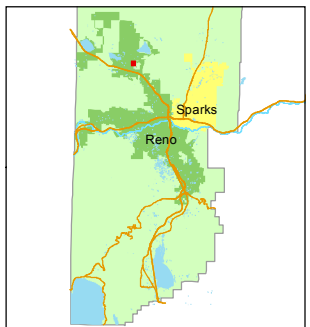
**550-41**

STATE OF NEVADA  
**WASHOE COUNTY**  
 ASSESSOR'S OFFICE  
 Michael E. Clark, Assessor

1001 East Ninth Street  
 Building D  
 Reno, Nevada 89512  
 (775) 328-2231



1 inch = 100 feet



created by: JMO 04/06/2016

last updated: \_\_\_\_\_

area previously shown on map(s)

550-01

NOTE: This map was prepared for the use of the Washoe County Assessor for assessment and illustrative purposes only. It does not represent a survey of the premises. No liability is assumed as to the sufficiency or accuracy of the data delineated hereon.

NGS "RENO AIR BASE"  
 N=14,918,380.939  
 E= 2,255,591.674

