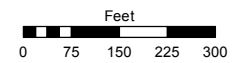


(#3963)
SKY VISTA VILLAGE 1A
SUBDIVISION
 A PLANNED UNIT DEVELOPMENT
 POR. OF NE 1/4 SEC. 5
 T20N - R19E
 AND
 POR. OF SECTIONS 32 & 33
 T21N - R19E

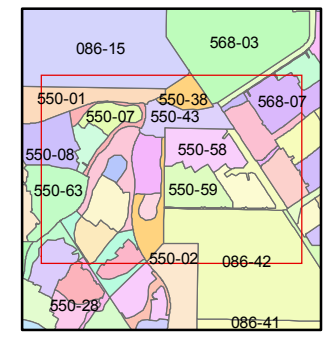
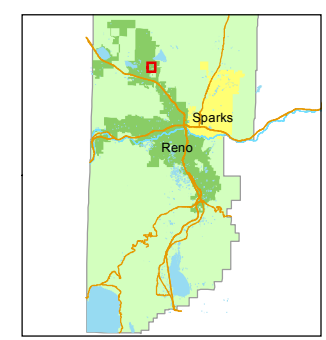
Assessor's Map Number
550-38

STATE OF NEVADA
WASHOE COUNTY
ASSESSOR'S OFFICE
 Michael E. Clark, Assessor

1001 East Ninth Street
 Building D
 Reno, Nevada 89512
 (775) 328-2231



1 inch = 300 feet



created by: JMO 04/08/2016

last updated: _____

area previously shown on map(s)
550-01

NOTE: This map was prepared for the use of the Washoe County Assessor for assessment and illustrative purposes only. It does not represent a survey of the premises. No liability is assumed as to the sufficiency or accuracy of the data delineated hereon.