

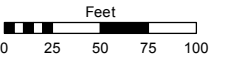
(#3576)
SKY VISTA VILLAGE 8B
 A PORTION OF SECTION 5
 T20N - R19E

Assessor's Map Number

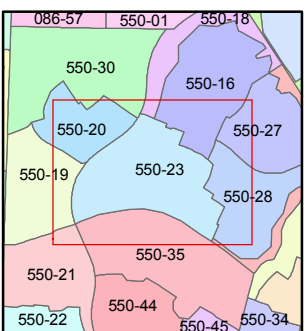
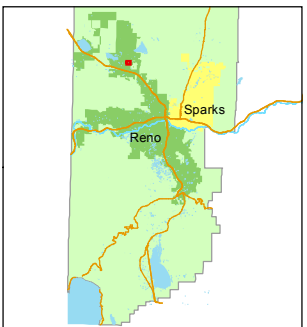
550-23

STATE OF NEVADA
WASHOE COUNTY
ASSESSOR'S OFFICE
 Joshua G. Wilson, Assessor

1001 East Ninth Street
 Building D
 Reno, Nevada 89512
 (775) 328-2231



1 inch = 100 feet

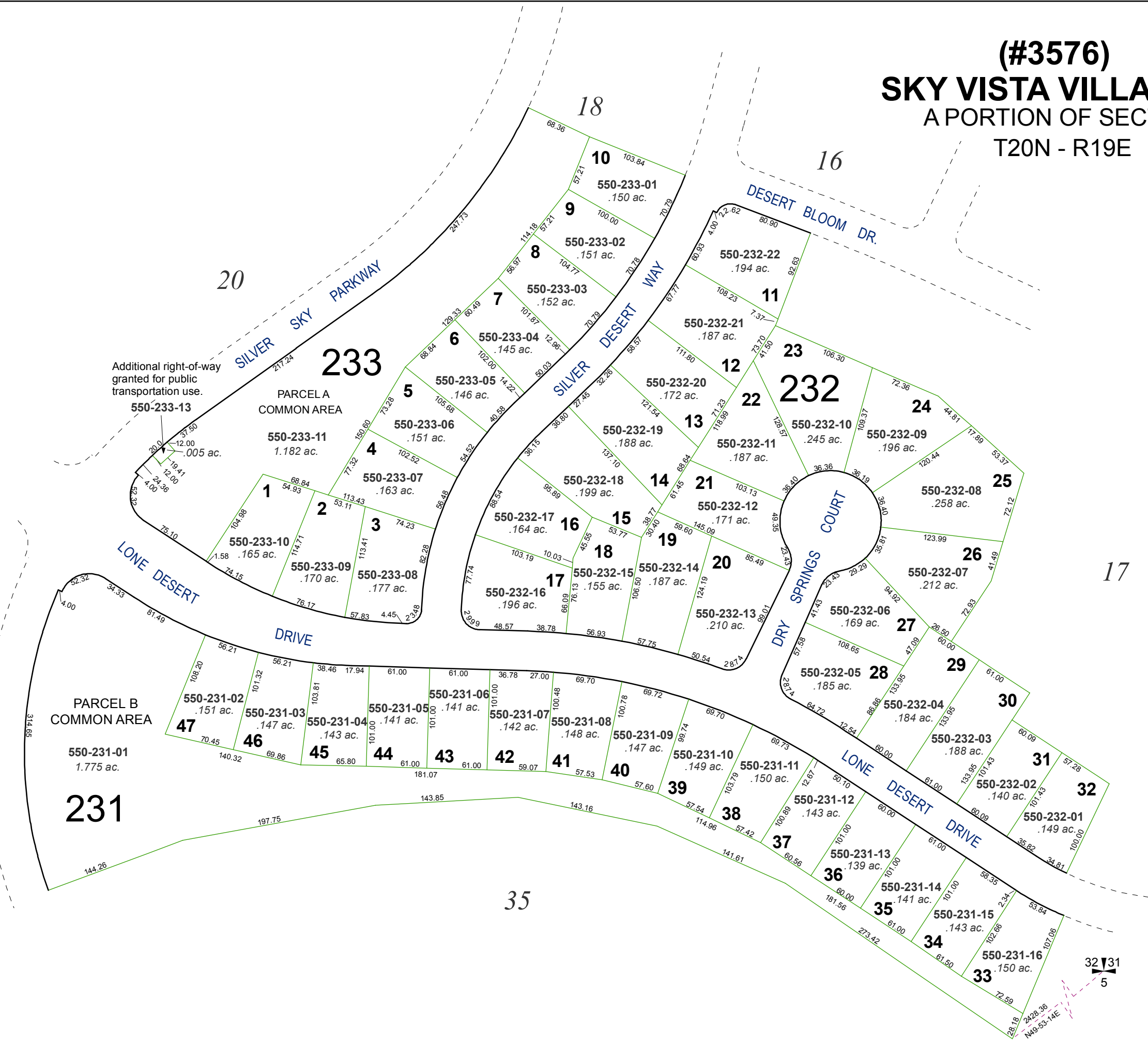


created by: CFB 06/01/2012

last updated: _____

area previously shown on map(s) _____

NOTE: This map was prepared for the use of the Washoe County Assessor for assessment and illustrative purposes only. It does not represent a survey of the premises. No liability is assumed as to the sufficiency or accuracy of the data delineated hereon.



Additional right-of-way granted for public transportation use.

19

35

17

32 31
5