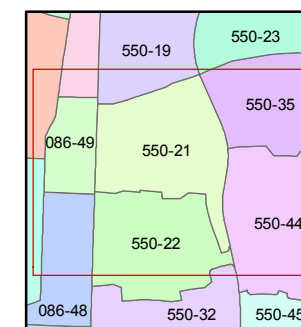
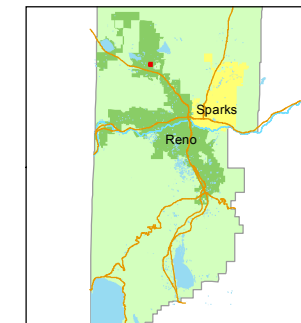




1 inch = 100 feet



created by: KSB 8/27/2015

last updated: \_\_\_\_\_

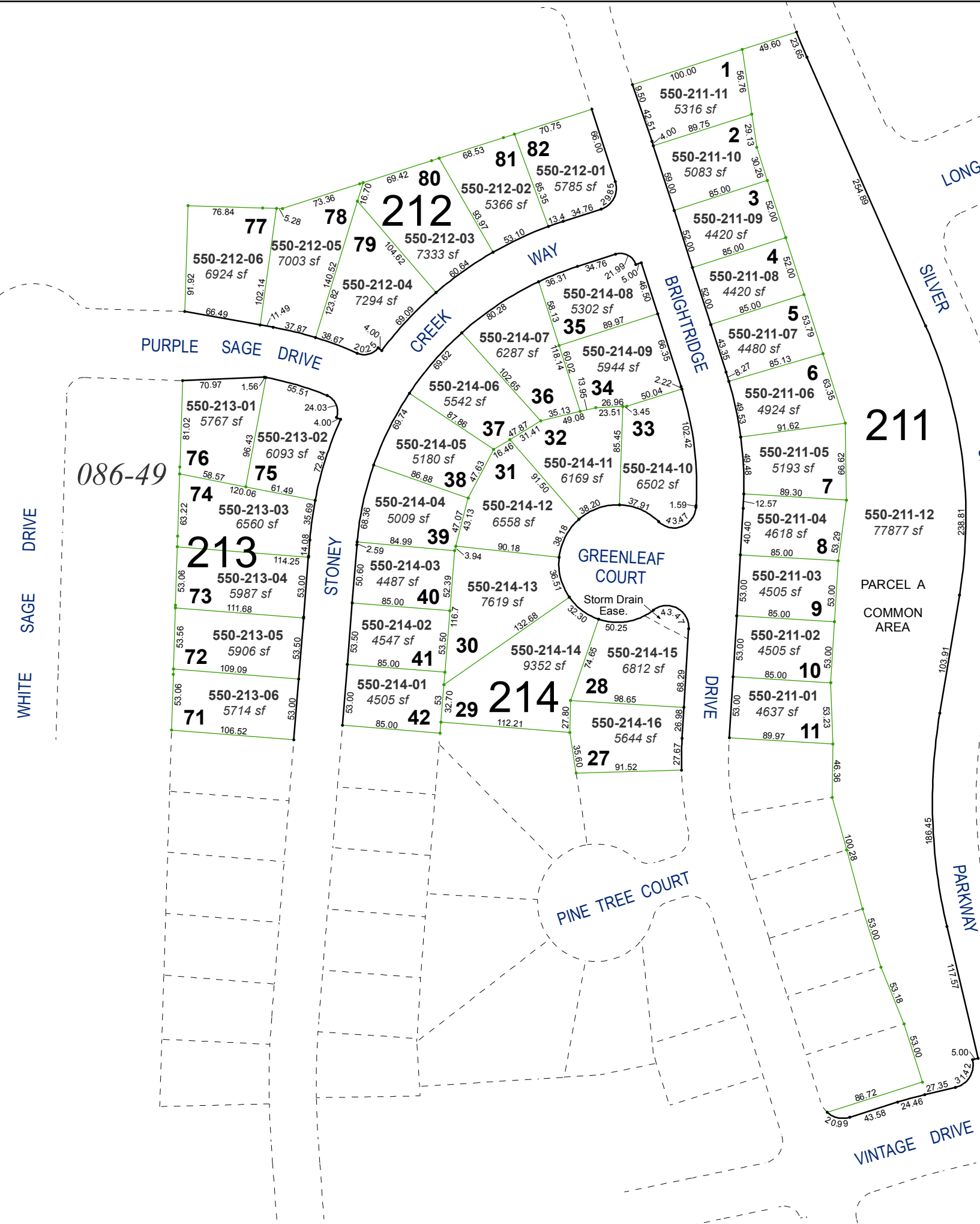
area previously shown on map(s)

550-01

NOTE: This map was prepared for the use of the Washoe County Assessor for assessment and illustrative purposes only. It does not represent a survey of the premises. No liability is assumed as to the sufficiency or accuracy of the data delineated hereon.

# (#3561) SKY VISTA VILLAGE 10B PHASE 1 SUBDIVISION A PLANNED UNIT DEVELOPMENT

## PORTION OF SECTION 5 T20N - R19E



086-49

211

550-211-12  
77877 sf

PARCEL A  
COMMON  
AREA

550-211-01  
4637 sf

550-211-02  
4505 sf

550-211-03  
4505 sf

550-211-04  
4618 sf

550-211-05  
5193 sf

550-211-06  
4924 sf

550-211-07  
4480 sf

550-211-08  
4420 sf

550-211-09  
4420 sf

550-211-10  
5083 sf

550-211-11  
5316 sf

550-212-01  
5785 sf

550-212-02  
5366 sf

550-212-03  
7333 sf

550-212-04  
7294 sf

550-212-05  
7003 sf

550-212-06  
6924 sf

550-213-01  
5767 sf

550-213-02  
6093 sf

550-213-03  
6560 sf

550-213-04  
5987 sf

550-213-05  
5906 sf

550-213-06  
5714 sf

550-214-01  
4505 sf

550-214-02  
4547 sf

550-214-03  
4487 sf

550-214-04  
5009 sf

550-214-05  
5180 sf

550-214-06  
5542 sf

550-214-07  
6287 sf

550-214-08  
5302 sf

550-214-09  
5944 sf

550-214-10  
6502 sf

550-214-11  
6169 sf

550-214-12  
6558 sf

550-214-13  
7619 sf

550-214-14  
9352 sf

550-214-15  
6812 sf

550-214-16  
5644 sf

550-214-27  
91.52

550-214-28  
98.65

550-214-29  
112.21

550-214-30  
116.7

550-214-31  
97.50

550-214-32  
91.41

550-214-33  
85.45

550-214-34  
50.04

550-214-35  
59.97

550-214-36  
26.96

550-214-37  
31.41

550-214-38  
47.63

550-214-39  
43.13

550-214-40  
85.00

550-214-41  
85.00

550-214-42  
85.00

550-214-43  
116.7

550-214-44  
132.68

550-214-45  
50.25

550-214-46  
74.88

550-214-47  
32.30

550-214-48  
4.37

550-214-49  
38.18

550-214-50  
37.91

550-214-51  
1.59

550-214-52  
43.41

550-214-53  
37.91

550-214-54  
1.59

550-214-55  
43.41

550-214-56  
37.91

550-214-57  
1.59

550-214-58  
43.41

550-214-59  
37.91

550-214-60  
1.59

550-214-61  
43.41

550-214-62  
37.91

550-214-63  
1.59

550-214-64  
43.41

550-214-65  
37.91

550-214-66  
1.59

550-214-67  
43.41

550-214-68  
37.91

550-214-69  
1.59

550-214-70  
43.41

550-214-71  
37.91

550-214-72  
1.59

550-214-73  
43.41

550-214-74  
37.91

550-214-75  
1.59

550-214-76  
43.41

550-214-77  
37.91

550-214-78  
1.59

550-214-79  
43.41

550-214-80  
37.91

550-214-81  
1.59

550-214-82  
43.41

550-214-83  
37.91

550-214-84  
1.59

550-214-85  
43.41

550-214-86  
37.91

550-214-87  
1.59

550-214-88  
43.41

550-214-89  
37.91

550-214-90  
1.59

550-214-91  
43.41

550-214-92  
37.91

550-214-93  
1.59

550-214-94  
43.41

550-214-95  
37.91

550-214-96  
1.59

550-214-97  
43.41

550-214-98  
37.91

550-214-99  
1.59

550-214-100  
43.41

550-214-101  
37.91

550-214-102  
1.59

550-214-103  
43.41

550-214-104  
37.91

550-214-105  
1.59

550-214-106  
43.41

550-214-107  
37.91

550-214-108  
1.59

550-214-109  
43.41

550-214-110  
37.91

550-214-111  
1.59

550-214-112  
43.41

550-214-113  
37.91

550-214-114  
1.59

550-214-115  
43.41

550-214-116  
37.91

550-214-117  
1.59

550-214-118  
43.41

550-214-119  
37.91

550-214-120  
1.59

550-214-121  
43.41

550-214-122  
37.91

550-214-123  
1.59

550-214-124  
43.41

550-214-125  
37.91

550-214-126  
1.59

550-214-127  
43.41

550-214-128  
37.91

550-214-129  
1.59

550-214-130  
43.41

550-214-131  
37.91

550-214-132  
1.59

550-214-133  
43.41

550-214-134  
37.91

550-214-135  
1.59

550-214-136  
43.41

550-214-137  
37.91

550-214-138  
1.59

550-214-139  
43.41

550-214-140  
37.91

550-214-141  
1.59

550-214-142  
43.41

550-214-143  
37.91

550-214-144  
1.59

550-214-145  
43.41