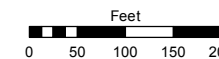
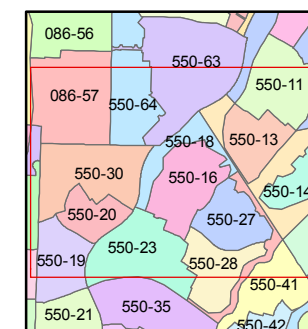
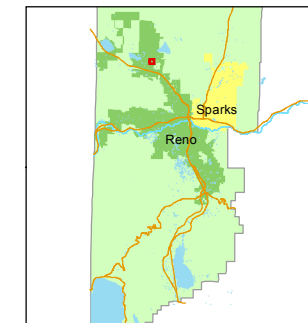


STATE OF NEVADA  
**WASHOE COUNTY**  
ASSESSOR'S OFFICE  
Michael E. Clark, Assessor

1001 East Ninth Street  
Building D  
Reno, Nevada 89512  
(775) 328-2231



1 inch = 200 feet



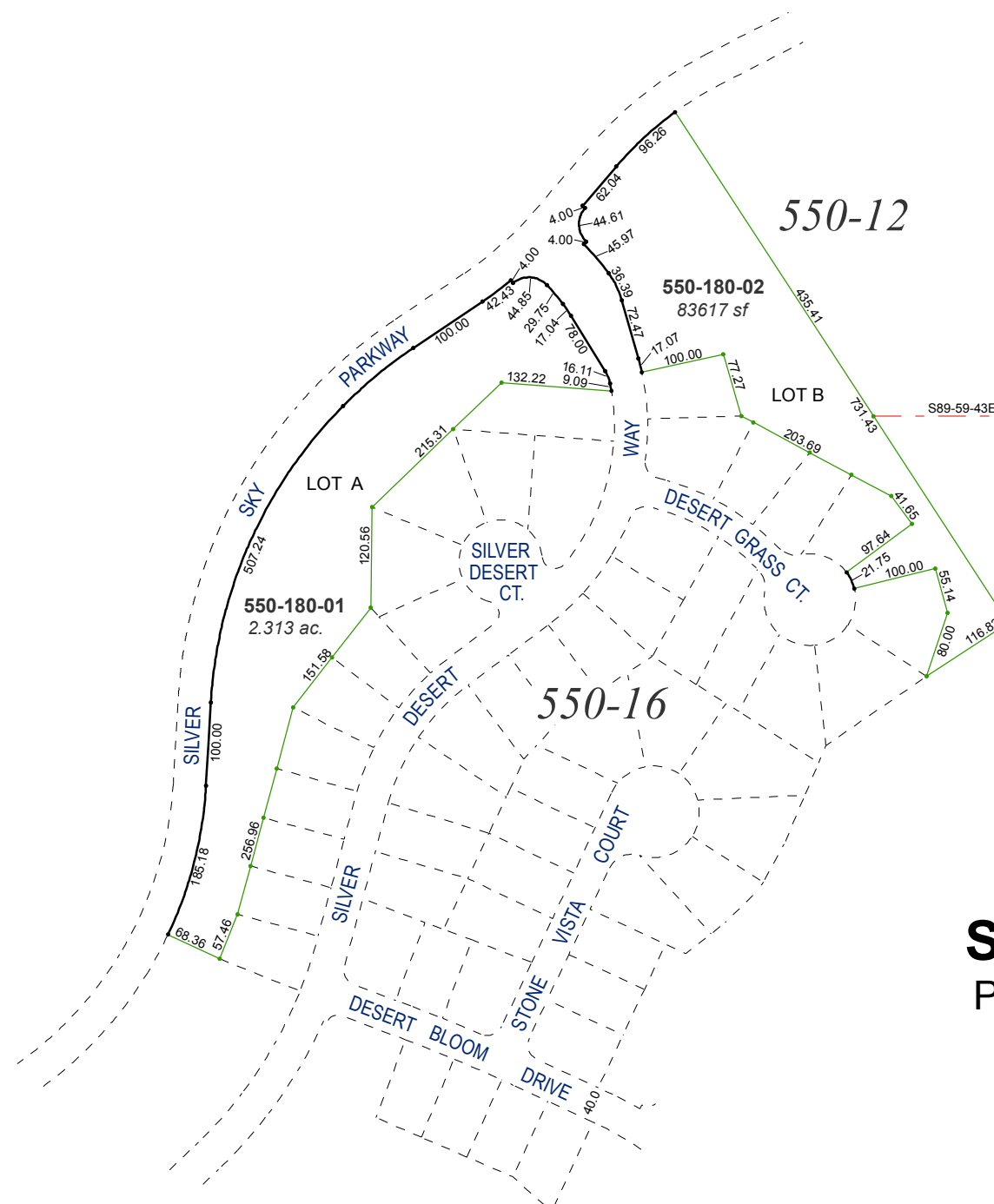
created by: KSB 8/05/2015

last updated: \_\_\_\_\_

area previously shown on map(s)

550-01

NOTE: This map was prepared for the use of the Washoe County Assessor for assessment and illustrative purposes only. It does not represent a survey of the premises. No liability is assumed as to the sufficiency or accuracy of the data delineated hereon.



**(#3486)**  
**SKY VISTA VILLAGE 8A**  
PLANNED UNIT DEVELOPMENT

A PORTION OF SECTION 32  
T21N - R19E

A PORTION OF SECTION 5  
T20N - R19E

T21N - R19E  
T20N - R19E

S89-59-43E

1518.89'

32 33

5