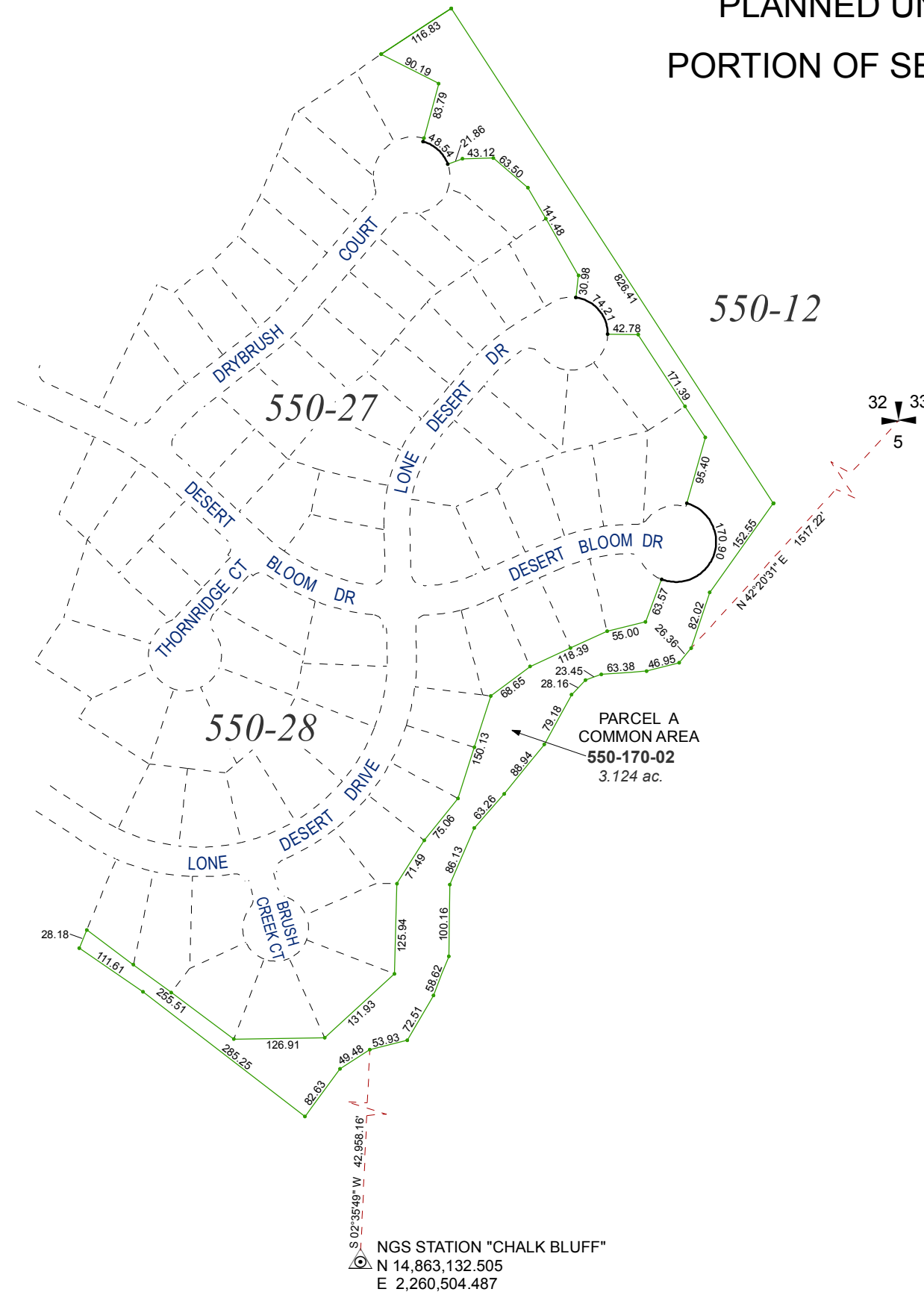


(#3703)
SKY VISTA VILLAGE 8C SUBDIVISION
 PLANNED UNIT DEVELOPMENT

PORTION OF SECTION 5, T20N - R19E



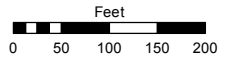
NGS STATION "CHALK BLUFF"
 N 14,863,132.505
 E 2,260,504.487

Assessor's Map Number

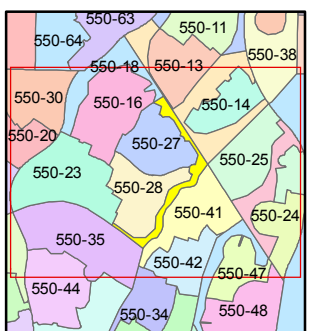
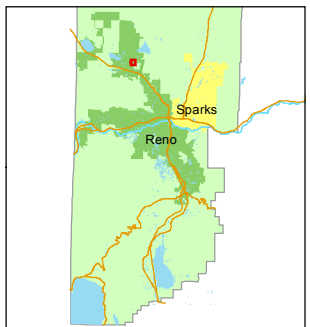
550-17

STATE OF NEVADA
WASHOE COUNTY
 ASSESSOR'S OFFICE
 Michael E. Clark, Assessor

1001 East Ninth Street
 Building D
 Reno, Nevada 89512
 (775) 328-2231



1 inch = 200 feet



created by: KSB 8/05/2015

last updated: _____

area previously shown on map(s)

550-01

NOTE: This map was prepared for the use of the Washoe County Assessor for assessment and illustrative purposes only. It does not represent a survey of the premises. No liability is assumed as to the sufficiency or accuracy of the data delineated hereon.