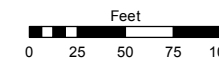


Assessor's Map Number

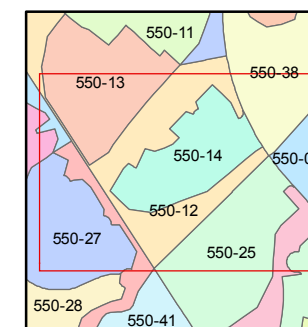
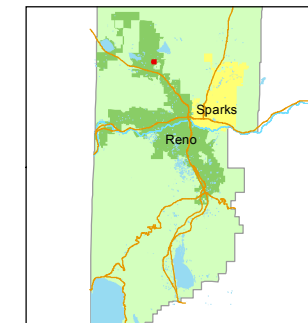
550-14

STATE OF NEVADA
WASHOE COUNTY
ASSESSOR'S OFFICE
Michael E. Clark, Assessor

1001 East Ninth Street
Building D
Reno, Nevada 89512
(775) 328-2231



1 inch = 100 feet



created by: KSB 8/05/2015

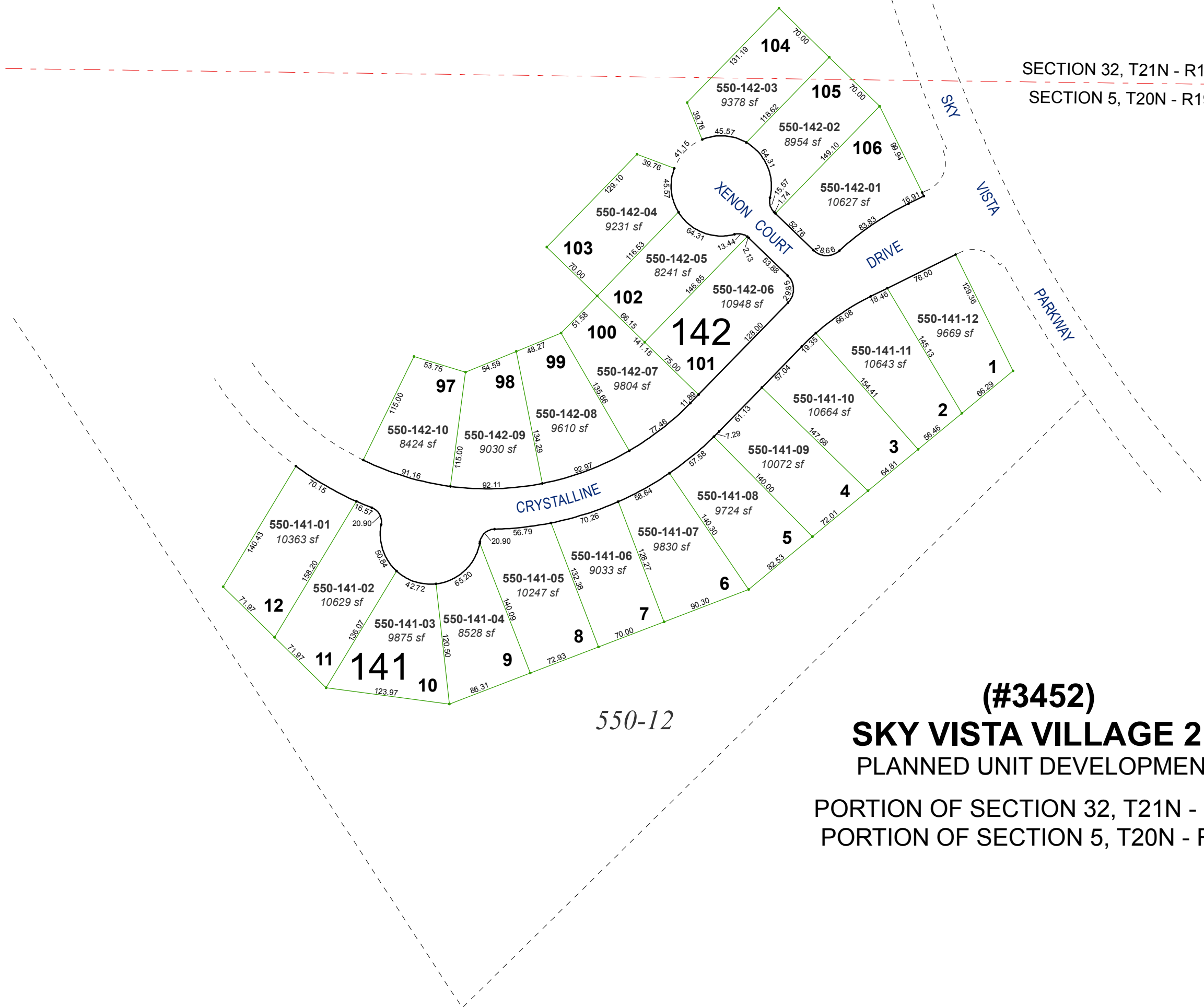
last updated: _____

area previously shown on map(s)

550-01

NOTE: This map was prepared for the use of the Washoe County Assessor for assessment and illustrative purposes only. It does not represent a survey of the premises. No liability is assumed as to the sufficiency or accuracy of the data delineated hereon.

SECTION 32, T21N - R19E
SECTION 5, T20N - R19E



550-12

(#3452)

SKY VISTA VILLAGE 2B
PLANNED UNIT DEVELOPMENT

PORTION OF SECTION 32, T21N - R19E
PORTION OF SECTION 5, T20N - R19E