

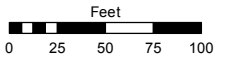
(#3269)
SKY VISTA - VILLAGE 9A
 A PLANNED UNIT DEVELOPMENT
 POR. SE 1/4 SECTION 32, T21N - R19E

Assessor's Map Number

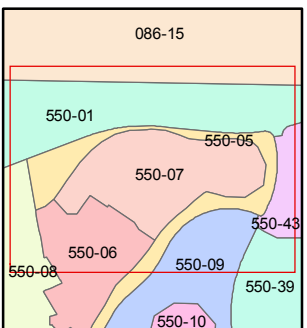
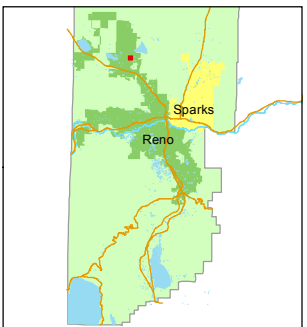
550-07

STATE OF NEVADA
WASHOE COUNTY
 ASSESSOR'S OFFICE
 Michael E. Clark, Assessor

1001 East Ninth Street
 Building D
 Reno, Nevada 89512
 (775) 328-2231



1 inch = 100 feet



created by: KSB 7/31/2015

last updated: _____

area previously shown on map(s)

550-01

NOTE: This map was prepared for the use of the Washoe County Assessor for assessment and illustrative purposes only. It does not represent a survey of the premises. No liability is assumed as to the sufficiency or accuracy of the data delineated hereon.

