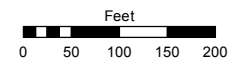


**(#3269)**  
**SKY VISTA - VILLAGE 9A**  
 A PLANNED UNIT DEVELOPMENT  
 POR. SE 1/4 SECTION 32, T21N - R19E

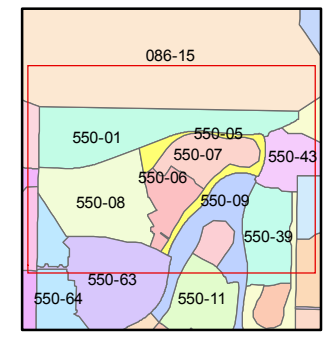
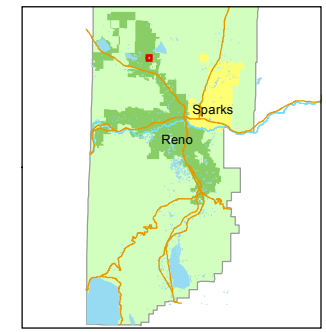
Assessor's Map Number  
**550-05**

STATE OF NEVADA  
**WASHOE COUNTY**  
 ASSESSOR'S OFFICE  
 Michael E. Clark, Assessor

1001 East Ninth Street  
 Building D  
 Reno, Nevada 89512  
 (775) 328-2231



1 inch = 200 feet



created by: KSB 7/28/2015

last updated: \_\_\_\_\_

area previously shown on map(s)  
550-01

NOTE: This map was prepared for the use of the Washoe County Assessor for assessment and illustrative purposes only. It does not represent a survey of the premises. No liability is assumed as to the sufficiency or accuracy of the data delineated hereon.

