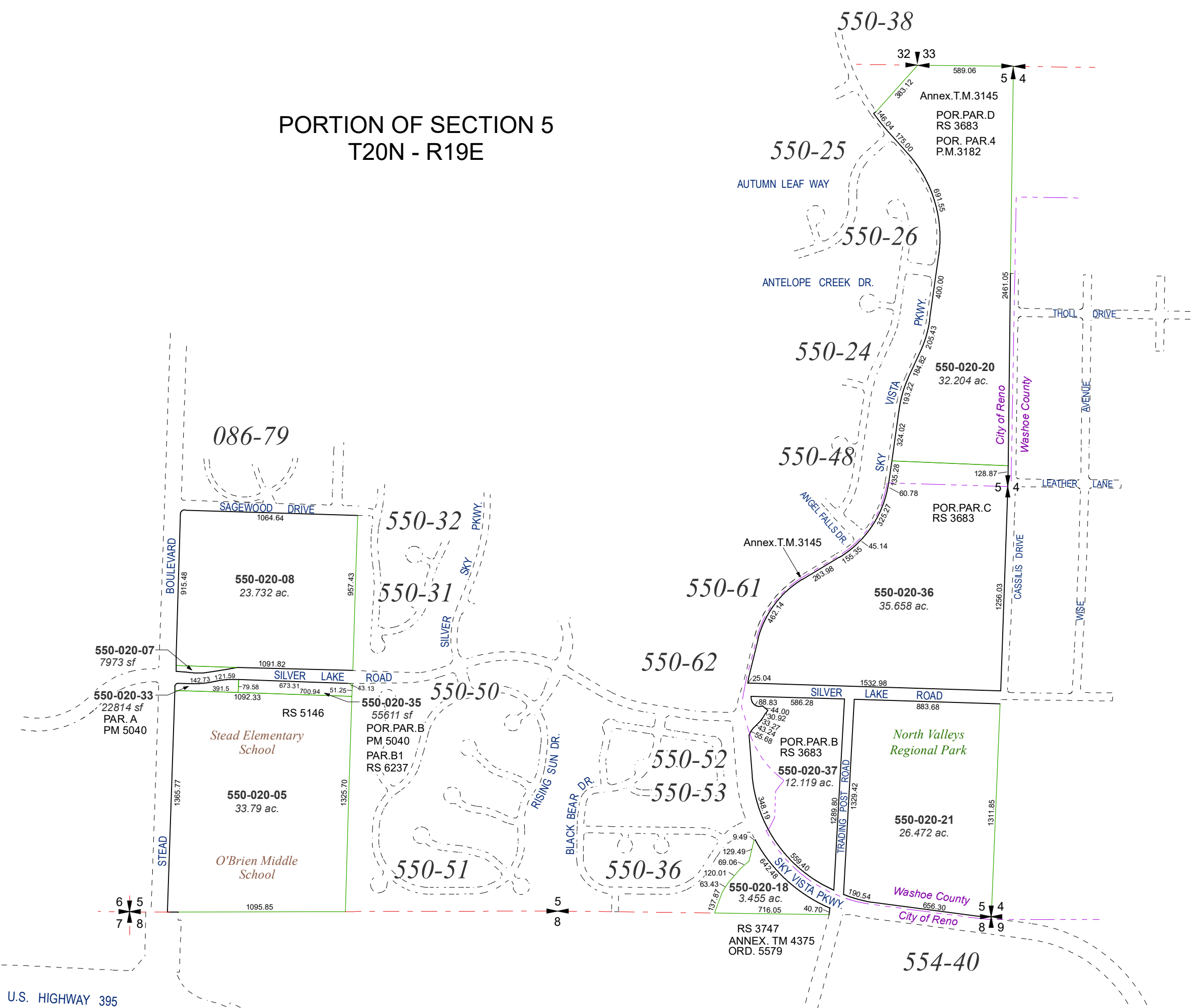
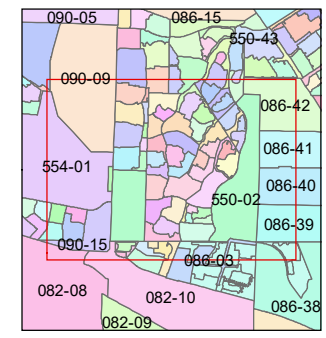
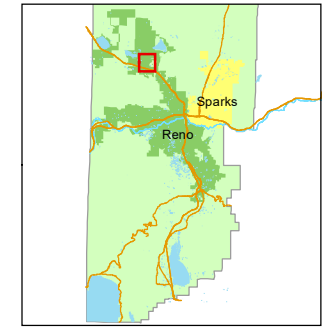
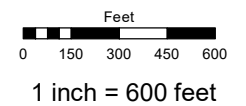


PORTION OF SECTION 5  
T20N - R19E



Assessor's Map Number  
**550-02**

STATE OF NEVADA  
**WASHOE COUNTY**  
ASSESSOR'S OFFICE  
1001 East Ninth Street, Building D  
Reno, Nevada 89512  
(775) 328-2231



created by: KSB 12/10/2010  
updated: CFB 7/12/12 SR 3/17/21  
JRA 2/3/22 JKf 7/21/22

area previously shown on map(s):

NOTE: This map was prepared for the use of the Washoe County Assessor for assessment and illustrative purposes only. It does not represent a survey of the premises. No liability is assumed as to the sufficiency or accuracy of the data delineated hereon.