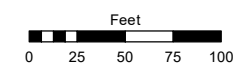
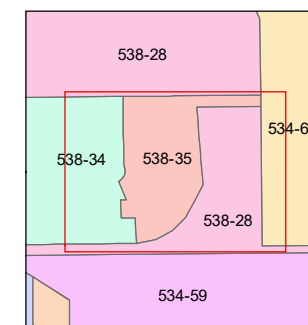
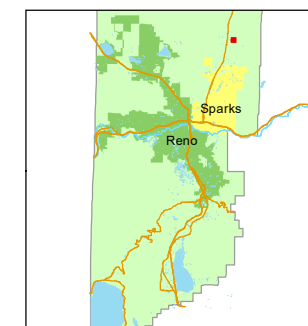


STATE OF NEVADA  
**WASHOE COUNTY**  
**ASSESSOR'S OFFICE**

1001 East Ninth Street, Building D  
Reno, Nevada 89512  
(775) 328-2231



1 inch = 100 feet



created by: SR 03/29/2022

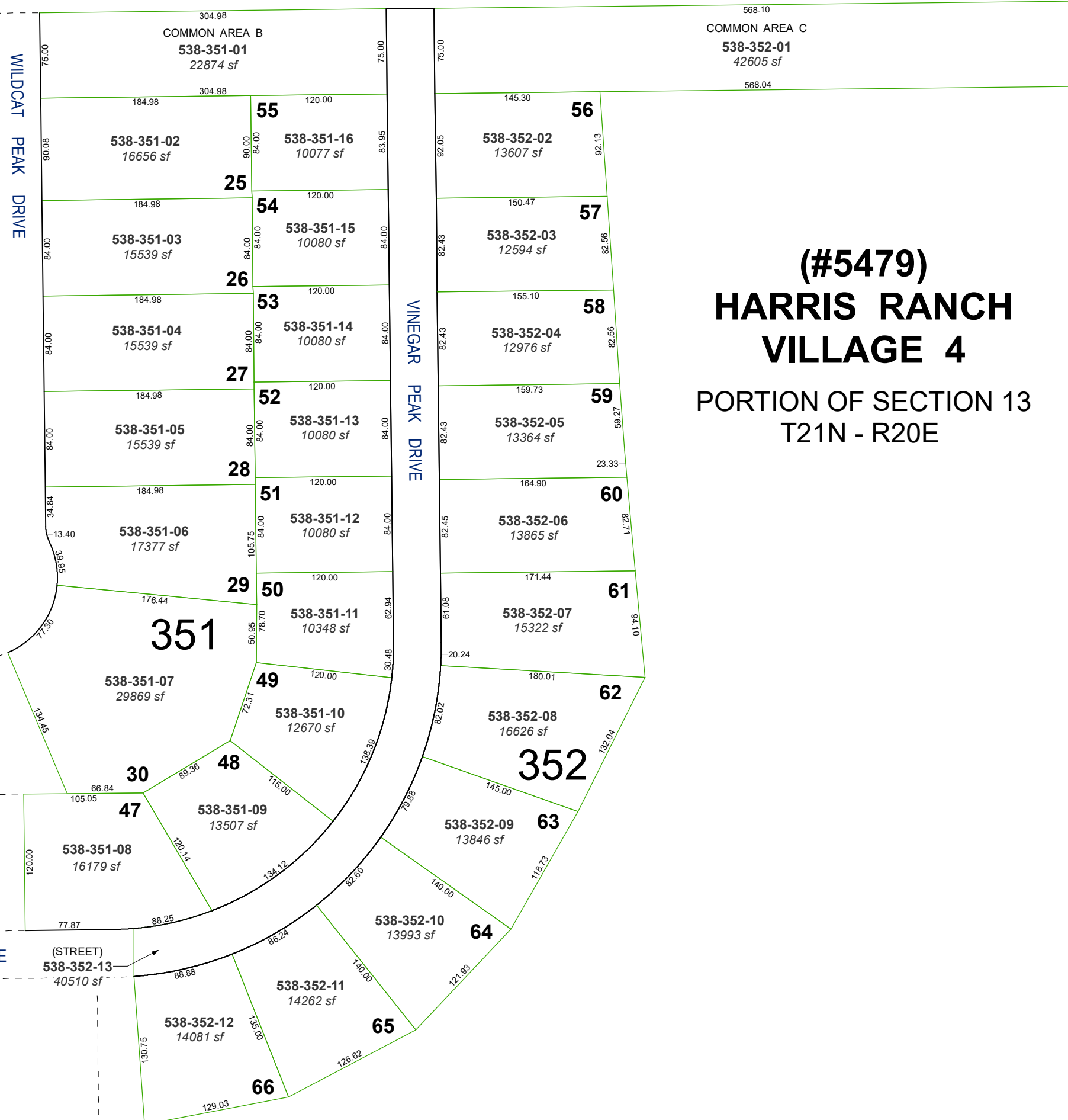
updated: \_\_\_\_\_

area previously shown on map(s):

538-28

NOTE: This map was prepared for the use of the Washoe County Assessor for assessment and illustrative purposes only. It does not represent a survey of the premises. No liability is assumed as to the sufficiency or accuracy of the data delineated hereon.

**(#5479)**  
**HARRIS RANCH**  
**VILLAGE 4**  
PORTION OF SECTION 13  
T21N - R20E



WILDCAT PEAK DRIVE

VINEGAR PEAK DRIVE

LA TRAY DRIVE

HUTCHINSON DRIVE

PAH RAH RIDGE DRIVE

(STREET)  
538-352-13  
40510 sf

**351**

**352**

Parcel ID	Area (sf)
538-351-01	22874
538-351-02	16656
538-351-03	15539
538-351-04	15539
538-351-05	15539
538-351-06	17377
538-351-07	29869
538-351-08	16179
538-351-09	13507
538-351-10	12670
538-351-11	10348
538-351-12	10080
538-351-13	10080
538-351-14	10080
538-351-15	10080
538-351-16	10077
538-352-01	42605
538-352-02	13607
538-352-03	12594
538-352-04	12976
538-352-05	13364
538-352-06	13865
538-352-07	15322
538-352-08	16626
538-352-09	13846
538-352-10	13993
538-352-11	14262
538-352-12	14081
538-351-25	
538-351-26	
538-351-27	
538-351-28	
538-351-29	
538-351-30	
538-351-31	
538-351-32	
538-351-33	
538-351-34	
538-351-35	
538-351-36	
538-351-37	
538-351-38	
538-351-39	
538-351-40	
538-351-41	
538-351-42	
538-351-43	
538-351-44	
538-351-45	
538-351-46	
538-351-47	
538-351-48	
538-351-49	
538-351-50	
538-351-51	
538-351-52	
538-351-53	
538-351-54	
538-351-55	
538-352-56	
538-352-57	
538-352-58	
538-352-59	
538-352-60	
538-352-61	
538-352-62	
538-352-63	
538-352-64	
538-352-65	
538-352-66	