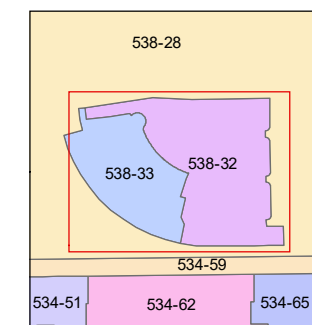
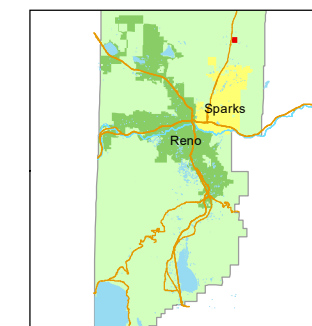


1 inch = 100 feet



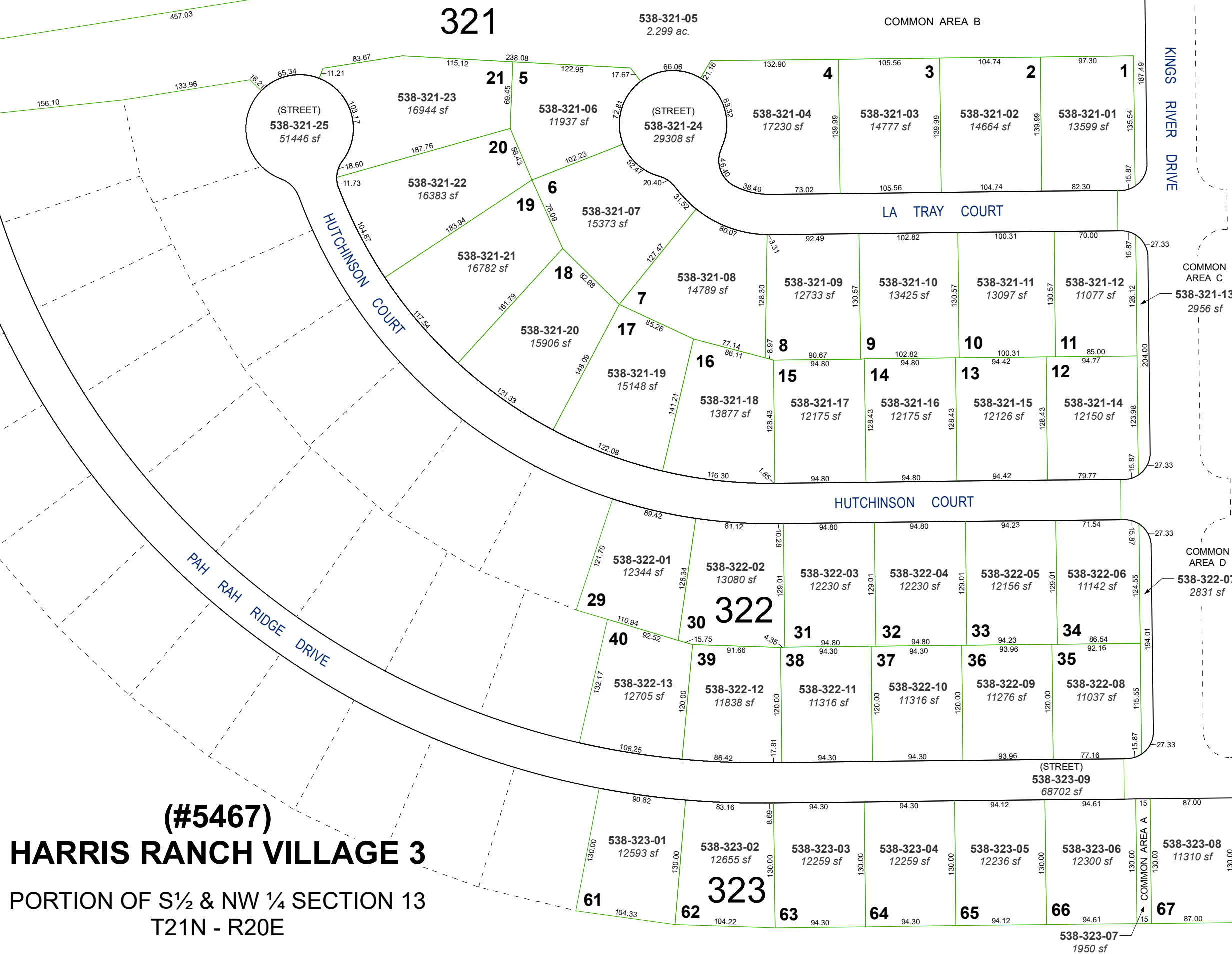
created by: SR 01/21/2022

updated: SR 02/28/22

area previously shown on map(s):

538-28

NOTE: This map was prepared for the use of the Washoe County Assessor for assessment and illustrative purposes only. It does not represent a survey of the premises. No liability is assumed as to the sufficiency or accuracy of the data delineated hereon.



(#5467)
HARRIS RANCH VILLAGE 3
PORTION OF S½ & NW ¼ SECTION 13
T21N - R20E