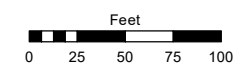
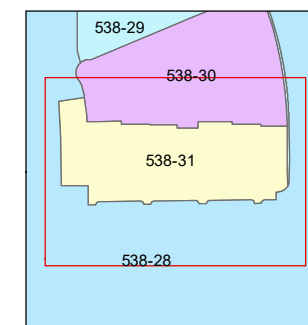
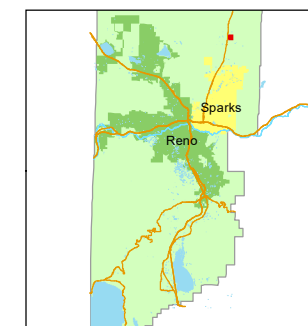


STATE OF NEVADA  
**WASHOE COUNTY**  
**ASSESSOR'S OFFICE**

1001 East Ninth Street, Building D  
Reno, Nevada 89512  
(775) 328-2231



1 inch = 100 feet



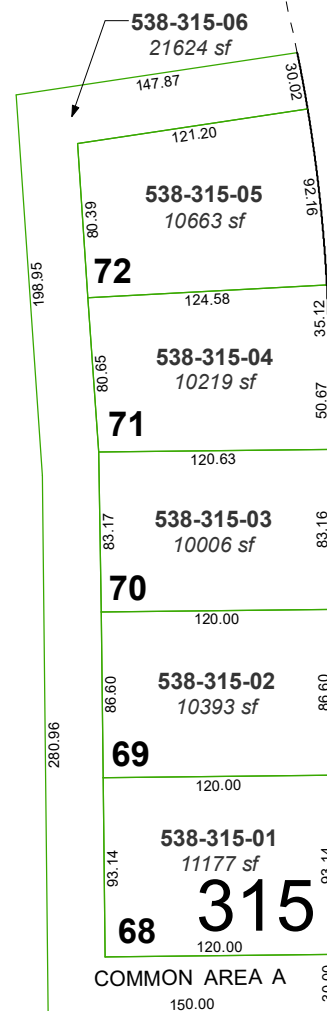
created by: SR 08/26/2021

updated: \_\_\_\_\_

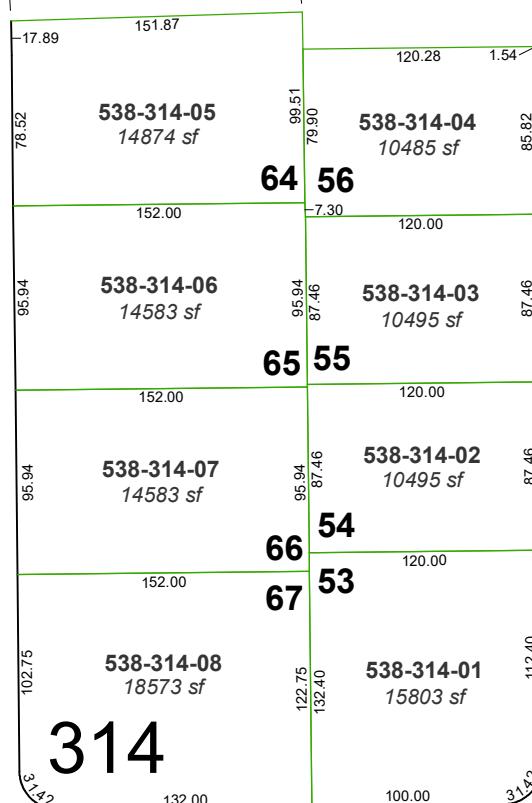
area previously shown on map(s): \_\_\_\_\_

538-28

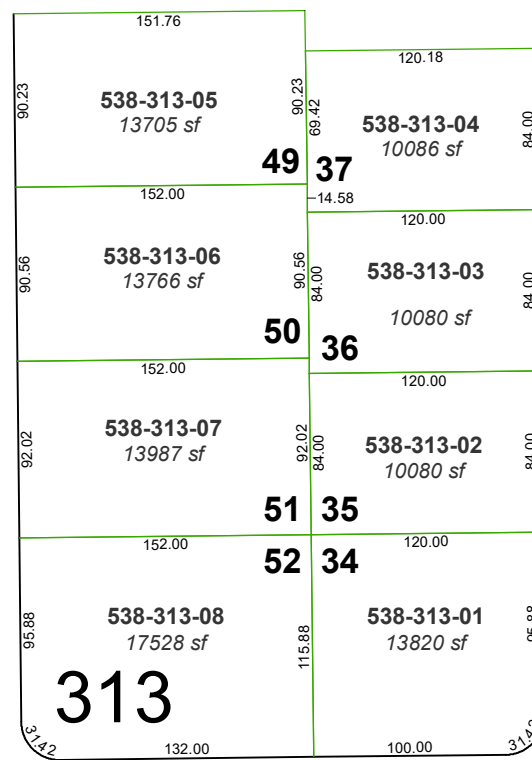
NOTE: This map was prepared for the use of the Washoe County Assessor for assessment and illustrative purposes only. It does not represent a survey of the premises. No liability is assumed as to the sufficiency or accuracy of the data delineated hereon.



W. SPANISH RANCH DRIVE

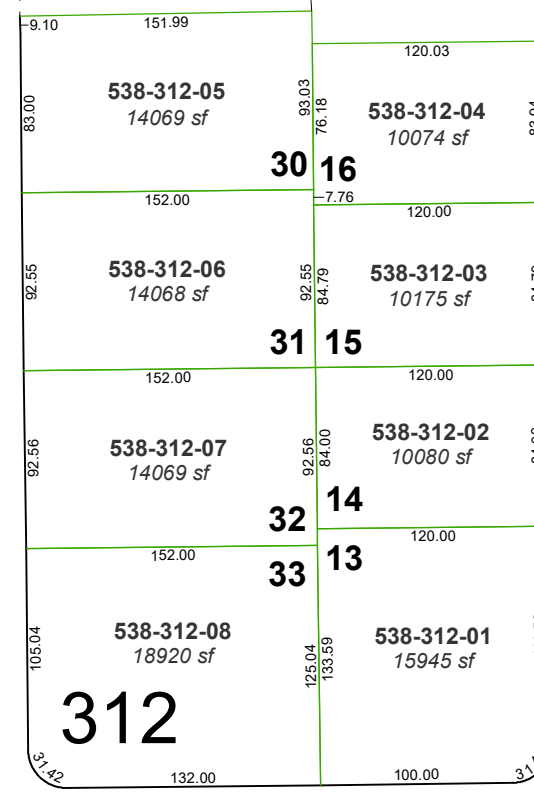


NEFF RANCH DRIVE

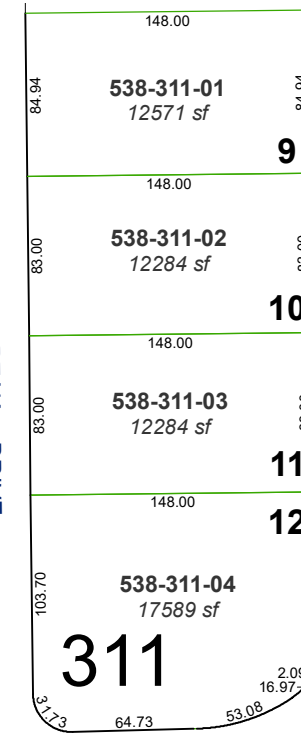


GRIFFITH CANYON DRIVE

CROSBY RANCH DRIVE



SUGARLOAF PEAK DRIVE



KINGS RIVER DRIVE

**(#5441)**  
**HARRIS RANCH - VILLAGE 1**

PORTION OF W½ SECTION 13  
T21N -R20E