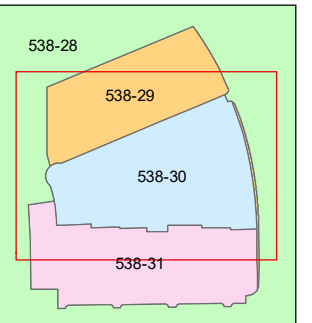
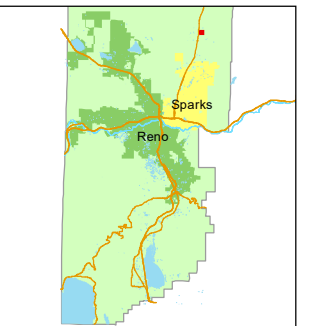


1 inch = 100 feet



created by: SR 08/25/2021

updated: _____

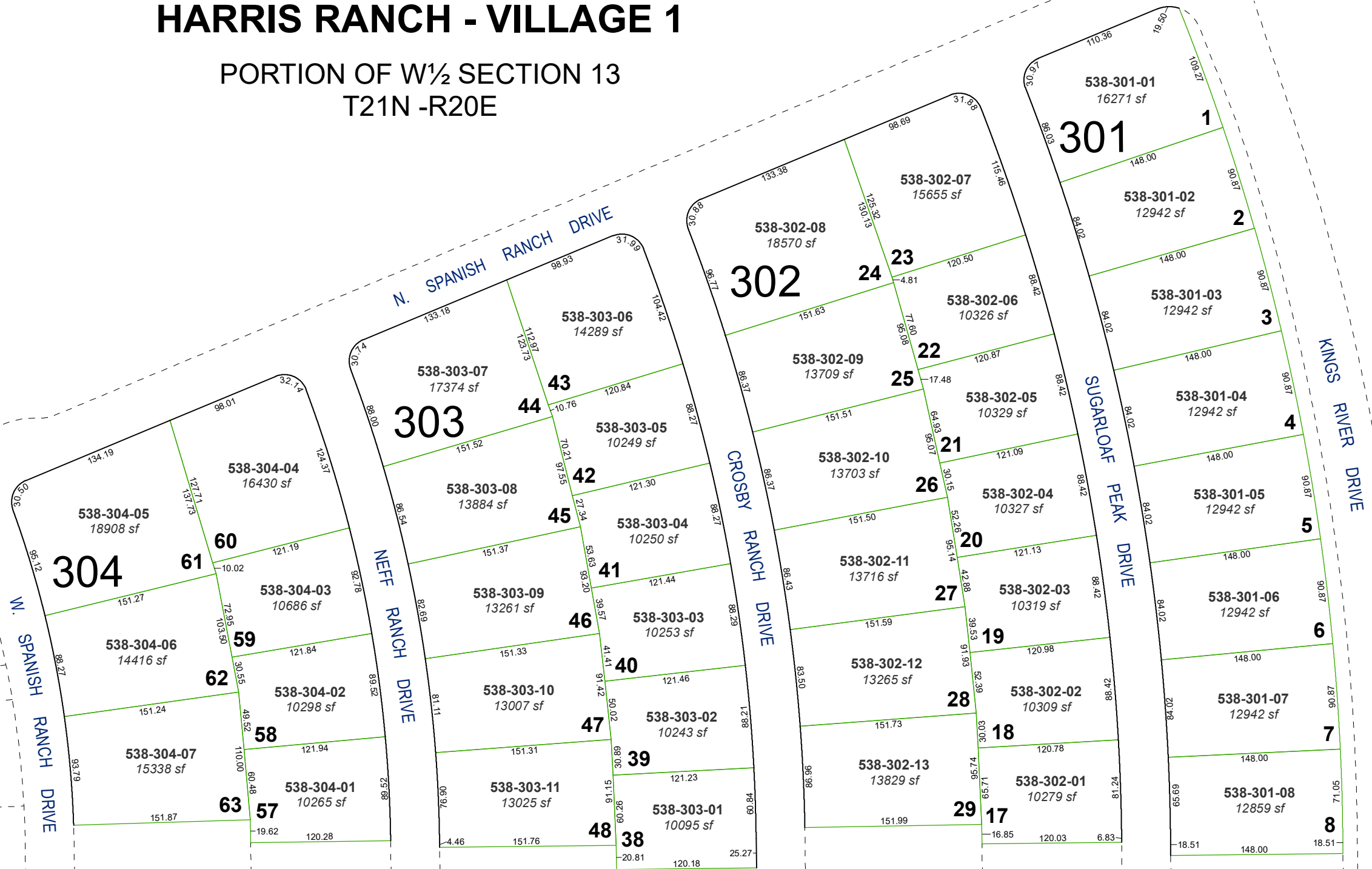
area previously shown on map(s):

538-28

NOTE: This map was prepared for the use of the Washoe County Assessor for assessment and illustrative purposes only. It does not represent a survey of the premises. No liability is assumed as to the sufficiency or accuracy of the data delineated hereon.

(#5441)
HARRIS RANCH - VILLAGE 1

PORTION OF W 1/2 SECTION 13
T21N -R20E



N. SPANISH RANCH DRIVE

N. SPANISH RANCH DRIVE

NEFF RANCH DRIVE

CROSBY RANCH DRIVE

SUGARLOAF PEAK DRIVE

KINGS RIVER DRIVE

304

303

302

301

538-304-05
18908 sf

538-304-06
14416 sf

538-304-07
15338 sf

538-304-04
16430 sf

538-304-03
10686 sf

538-304-02
10298 sf

538-304-01
10265 sf

538-303-07
17374 sf

538-303-08
13884 sf

538-303-09
13261 sf

538-303-10
13007 sf

538-303-11
13025 sf

538-303-06
14289 sf

538-303-05
10249 sf

538-303-03
10253 sf

538-303-02
10243 sf

538-303-01
10095 sf

538-303-06
14289 sf

538-303-04
10250 sf

538-303-03
10253 sf

538-303-02
10243 sf

538-303-01
10095 sf

538-303-06
14289 sf

538-303-04
10250 sf

538-303-03
10253 sf

538-303-02
10243 sf

538-303-01
10095 sf

538-302-08
18570 sf

538-302-09
13709 sf

538-302-10
13703 sf

538-302-11
13716 sf

538-302-12
13265 sf

538-302-13
13829 sf

538-302-01
10279 sf

538-302-07
15655 sf

538-302-06
10326 sf

538-302-05
10329 sf

538-302-04
10327 sf

538-302-03
10319 sf

538-302-02
10309 sf

538-302-01
10279 sf

538-301-01
16271 sf

538-301-02
12942 sf

538-301-03
12942 sf

538-301-04
12942 sf

538-301-05
12942 sf

538-301-06
12942 sf

538-301-07
12942 sf

538-301-08
12859 sf

1

2

3

4

5

6

7

8

60

59

58

57

43

42

41

40

39

38

44

45

46

47

48

23

22

21

20

19

18

17

24

25

26

27

28

29