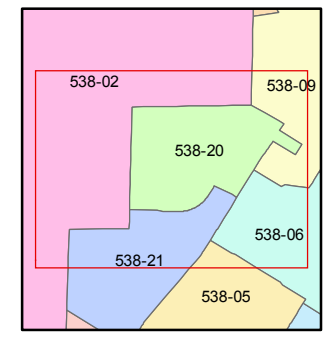
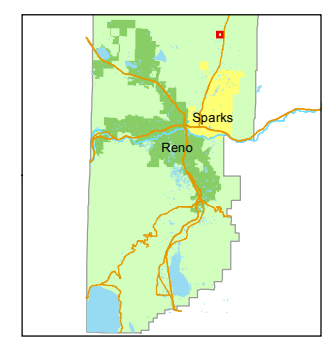
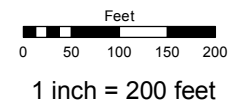


(#5086)
PEBBLE CREEK - UNIT 6A
 PORTION OF S 1/2 SECTION 11
 T21N - R20E

Assessor's Map Number
538-20

STATE OF NEVADA
WASHOE COUNTY
 ASSESSOR'S OFFICE
 Michael E. Clark, Assessor

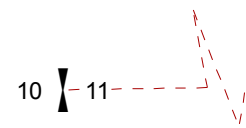
1001 East Ninth Street
 Building D
 Reno, Nevada 89512
 (775) 328-2231



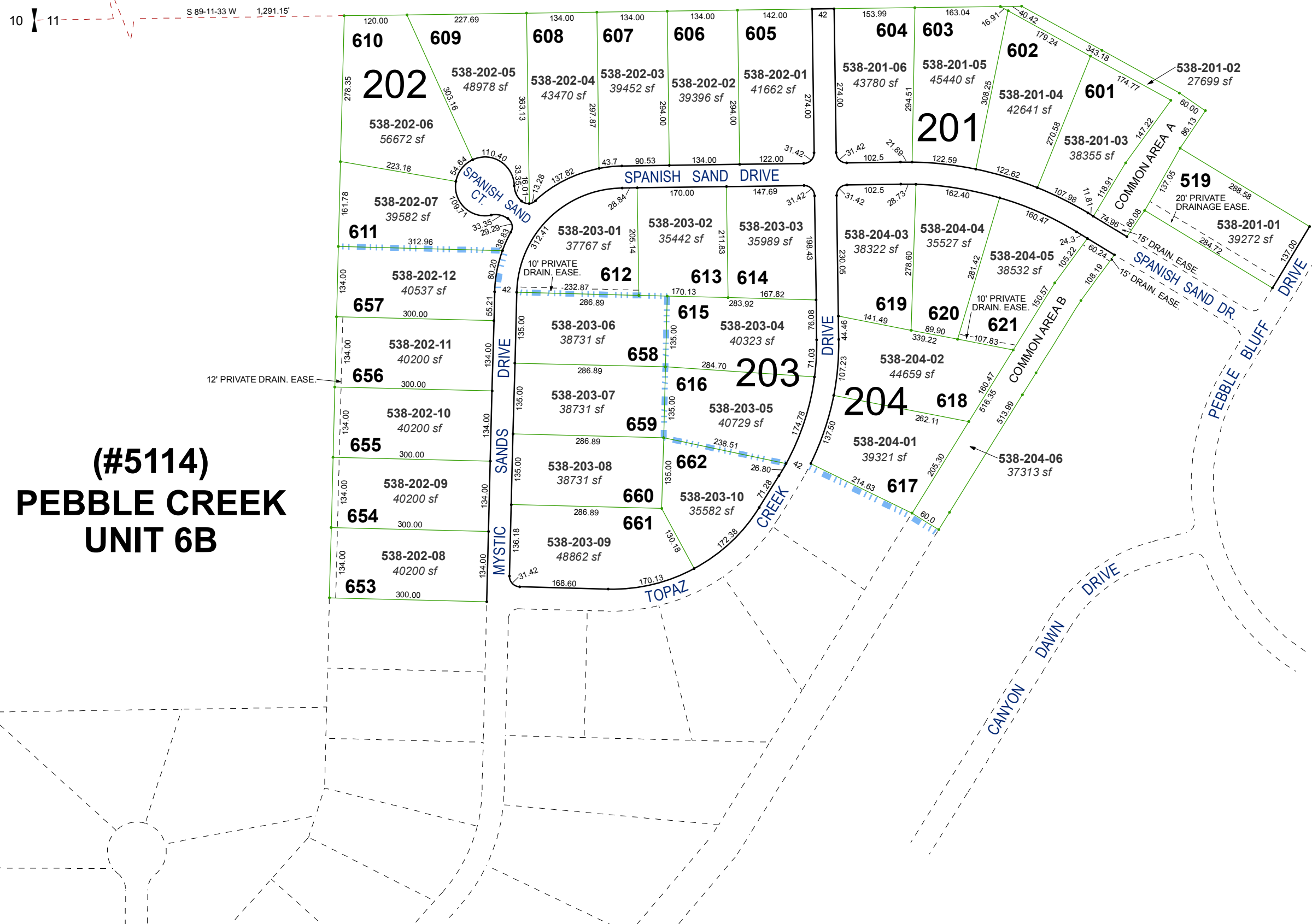
created by: KSB 7/23/2014
 last updated: KSB 3/27/15 KSB 4/01/16

area previously shown on map(s)
538-02

NOTE: This map was prepared for the use of the Washoe County Assessor for assessment and illustrative purposes only. It does not represent a survey of the premises. No liability is assumed as to the sufficiency or accuracy of the data delineated hereon.



S 89-11-33 W 1,291.15'



(#5114)
PEBBLE CREEK
UNIT 6B