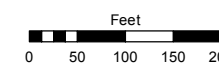
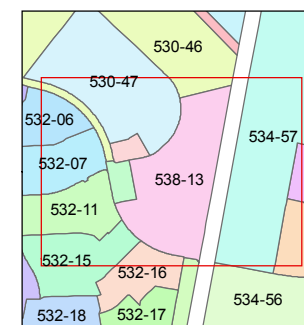
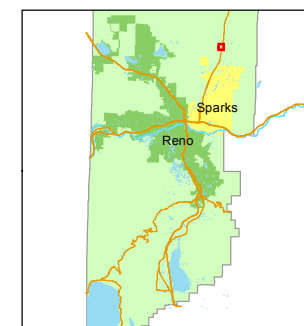


STATE OF NEVADA
WASHOE COUNTY
ASSESSOR'S OFFICE

1001 East Ninth Street, Building D
Reno, Nevada 89512
(775) 328-2231



1 inch = 200 feet



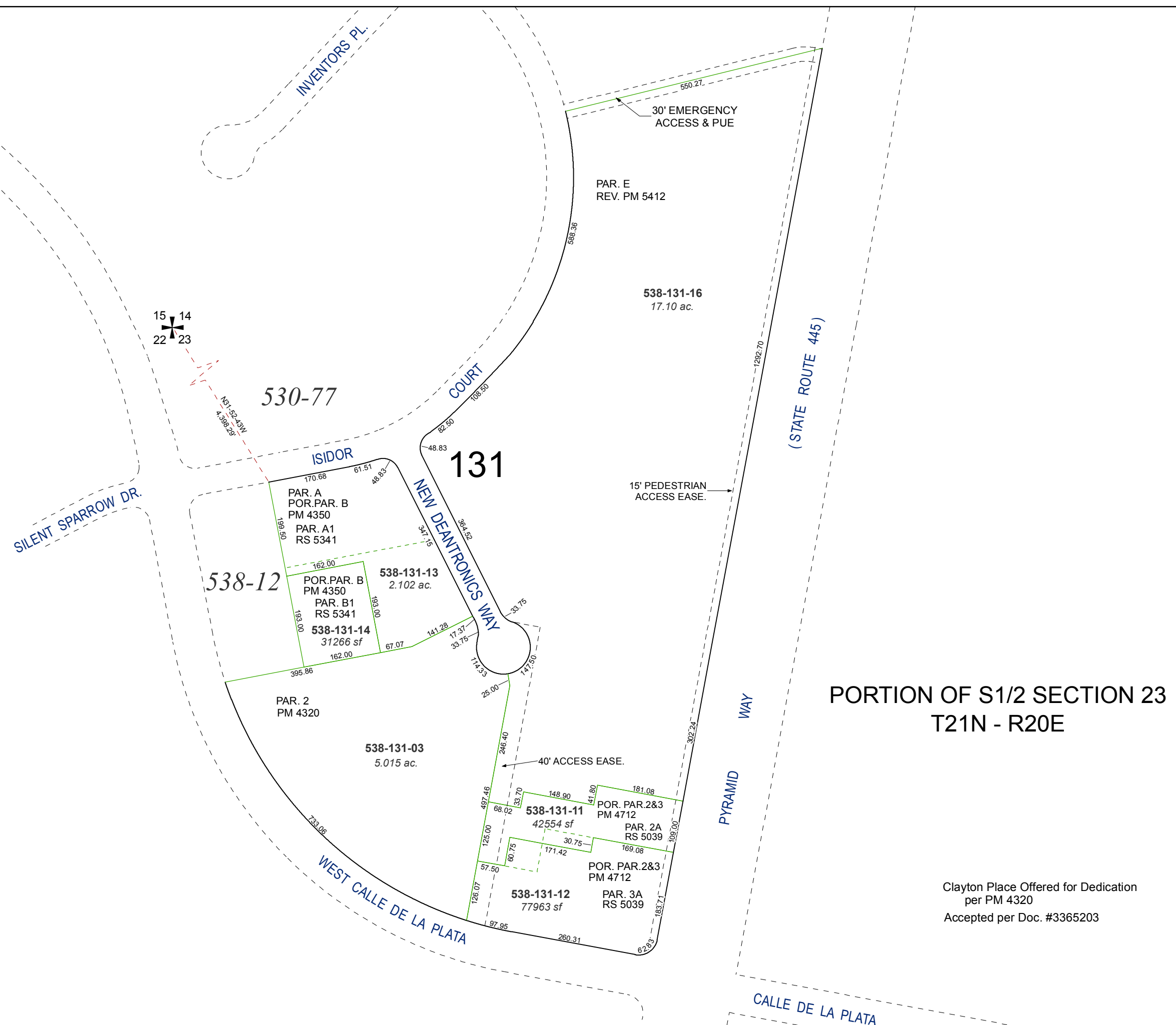
created by: KSB 06/29/2011

updated: SR 12/18/17 JMO 6/28/19

area previously shown on map(s):

530-46

NOTE: This map was prepared for the use of the Washoe County Assessor for assessment and illustrative purposes only. It does not represent a survey of the premises. No liability is assumed as to the sufficiency or accuracy of the data delineated hereon.



**PORTION OF S1/2 SECTION 23
T21N - R20E**

Clayton Place Offered for Dedication
per PM 4320
Accepted per Doc. #3365203