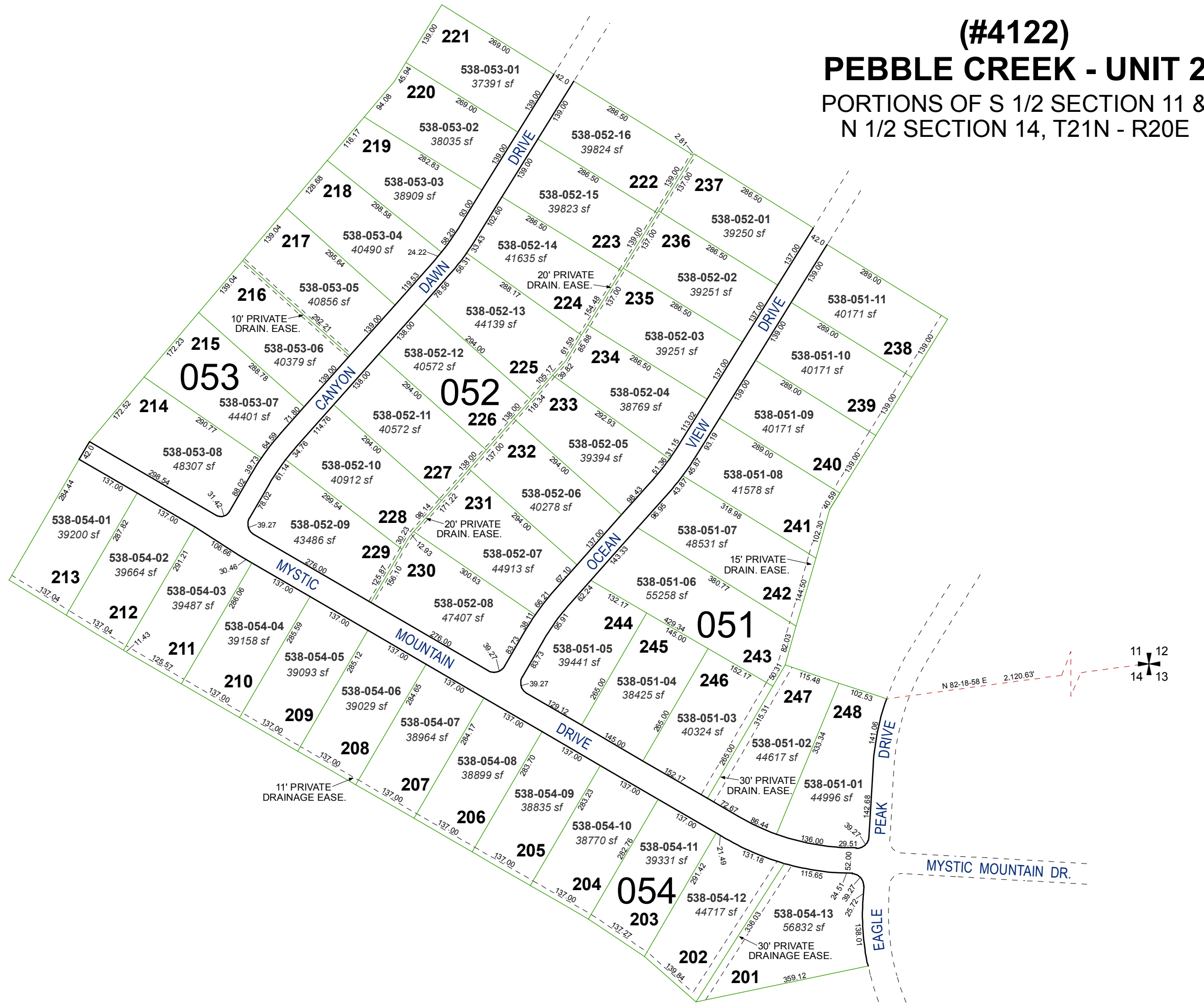


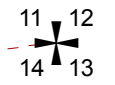
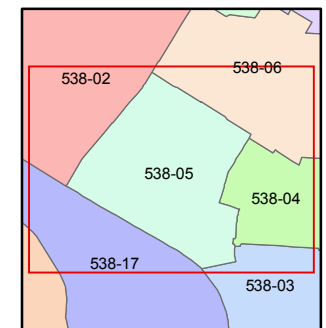
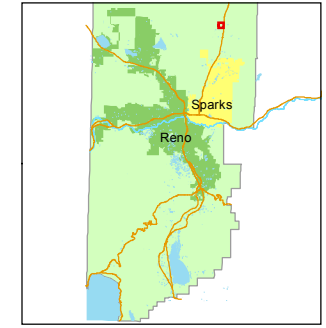
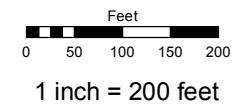
**(#4122)**  
**PEBBLE CREEK - UNIT 2**  
 PORTIONS OF S 1/2 SECTION 11 &  
 N 1/2 SECTION 14, T21N - R20E



Assessor's Map Number  
**538-05**

STATE OF NEVADA  
**WASHOE COUNTY**  
 ASSESSOR'S OFFICE  
 Joshua G. Wilson, Assessor

1001 East Ninth Street  
 Building D  
 Reno, Nevada 89512  
 (775) 328-2231



created by: KSB 10/14/2013  
 last updated: \_\_\_\_\_  
 area previously shown on map(s)  
530-28

NOTE: This map was prepared for the use of the Washoe County Assessor for assessment and illustrative purposes only. It does not represent a survey of the premises. No liability is assumed as to the sufficiency or accuracy of the data delineated hereon.