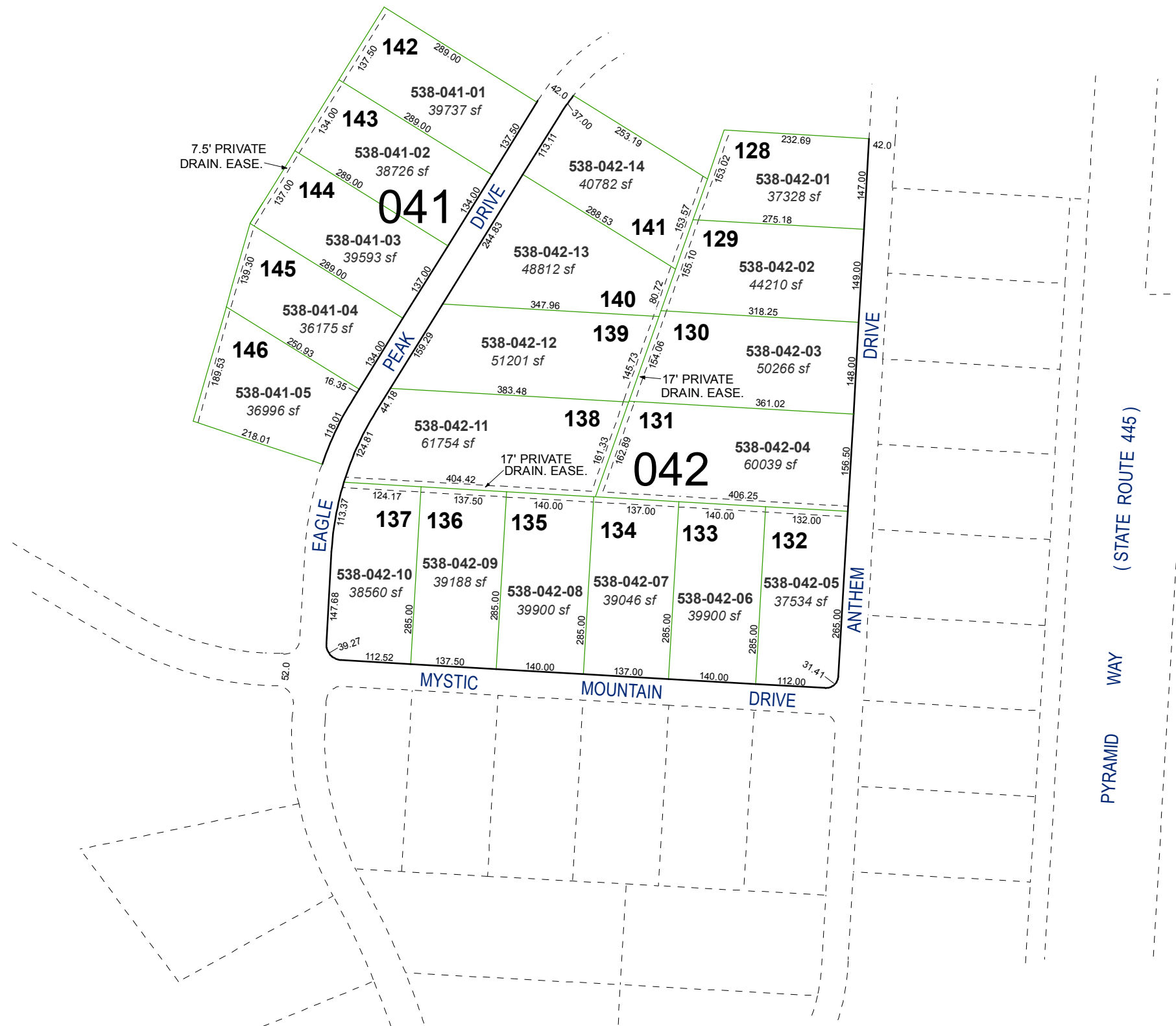


(#3990)
PEBBLE CREEK - UNIT 1
 PORTION OF SE 1/4 SECTION 11 &
 NE 1/4 SECTION 14, T21N - R20E

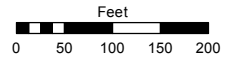


Assessor's Map Number

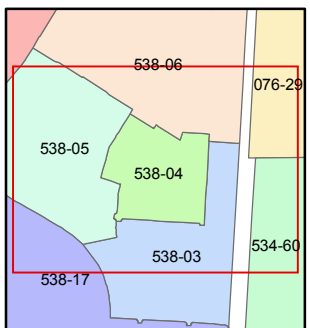
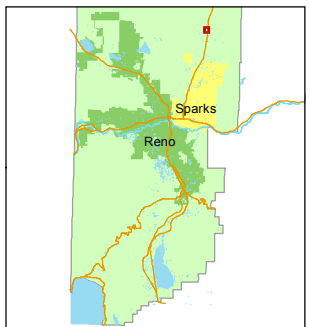
538-04

STATE OF NEVADA
WASHOE COUNTY
ASSESSOR'S OFFICE
 Joshua G. Wilson, Assessor

1001 East Ninth Street
 Building D
 Reno, Nevada 89512
 (775) 328-2231



1 inch = 200 feet



created by: KSB 10/14/2013

last updated: _____

area previously shown on map(s)

530-28

NOTE: This map was prepared for the use of the Washoe County Assessor for assessment and illustrative purposes only. It does not represent a survey of the premises. No liability is assumed as to the sufficiency or accuracy of the data delineated herein.